



EpilogLaser



Made in **USA**

EPILOGLASER.COM

OVER 30 YEARS OF EXPERIENCE

In 1988, Epilog Laser's revolutionary systems opened the world's eyes, not only to what could be accomplished with a laser, but also to how accessible a laser is to businesses, both large and small.

We are innovators. We are engineers. We are problem solvers. We are committed to designing and manufacturing the highest-quality, fastest laser systems in the industry, right here from our global headquarters in Golden, CO, in the foothills of the Rocky Mountains.

Our worldwide presence continues to grow with corporate offices located in the Netherlands and Canada. We now have even more locations to provide you with the highest level of support and convenience. Contact us to schedule a hands-on demonstration from your local distributor and see how an Epilog Laser can benefit your business with the industry's highest engraving speeds, the most-detailed etching, and fast, accurate cutting. Find out how an Epilog Laser can transform your business.





ENGRAVE – CUT – MARK

Electronics Engraving
Wood Engraving & Cutting
Marble & Stone Etching
Acrylic & Wood Signage
Nameplates & Desk Sets
Wedding Memorabilia
Corporate Giveaways
Glass Etching
Sporting Goods

Holiday Ornaments
Corporate & Sporting Awards
Architectural Models
One-of-a-Kind Gifts
Greeting Cards
Guitar Inlays
Custom Jewelry
Acrylic Plaques
Photo Frames

3D Models
Inlaid Signage
Photo Engraving
Barcode Engraving
Engraved Denim Jeans
Logo Engraving on Parts
Etched Business Cards
Tool Identification
Medical Part Marking

Laptop Customization
Paper Invitations
Marble Flooring
Cloth Etching
Memorials
Home Decor
Cabinetry
Product Marking
Industrial Etching

Phone Customization
Custom Pet Tags
Appliqués
Toys & Games
Photo Albums
Wine Bottle Etching
Engraved Mirrors
Photo Etching
And much more!

CHOOSE YOUR LASER

CO₂: Versatility

Engrave and cut a wide variety of materials with our CO₂ laser line. A CO₂ laser system can engrave on all kinds of materials, including wood, acrylic, rubber, plastic, and more.

	Engrave	Cut
Wood	•	•
Acrylic	•	•
Glass	•	
Coated metals	•	
Ceramics	•	
Delrin	•	•
Cloth	•	•
Leather	•	•
Marble	•	
Matboard	•	•
Melamine	•	•
Paper	•	•
Mylar	•	•
Cardboard	•	•
Rubber	•	•
Wood veneer	•	•
Fiberglass	•	•
Painted metals	•	
Tile	•	
Plastic	•	•
Cork	•	•
MDF	•	•
Anodized aluminum	•	
Twill	•	•
Stainless steel	‡	
Brass	‡	
Titanium	‡	
Bare metal	‡	

‡ CO₂ lasers will mark bare metals when coated with a metal marking solution. For more info, call +1 303-277-1188.

Fiber: Metal Etching

Featuring an air-cooled ytterbium fiber laser source, these are the ideal systems for direct metal etching and marking, as well as marking engineered plastics.

Compatible Materials:

ABS (black/white)
Aluminum 6061
Aluminum, yellow chromate
Anodized aluminum
Bayers bayblend FR110
Brass
Brushed aluminum
Carbon fiber
Carbon nanotube
Ceramics
Ceramics, metal-plated
Cobalt chrome steel
Copper
DAP- Diallyl Phthalate
Delrin, colored (black/brown)
GE Plastics polycarbonate resin
Hard coat anodized aluminum
Inconel metals (various)
Iron-phosphate coating
Machine tool steel
Magnesium
Makrolon
Makrolon 2807
Molybdenum

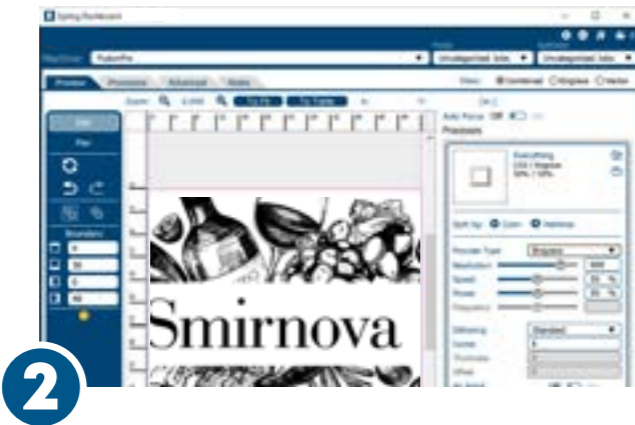
Nickel-plated 1215 mild steel
Nickel-plated brass
Nickel-plated gold
Nickel-plated Kovar
Nickel-plated steel
Nylon
PEEK, white & glass filled
Polybutylene Terephthalate
Polycarbonate, (black/white)
Polycarbonate resin 121-R
Polysulfone
Rynite PET
Santoprene
Silicon carbide
Silicon steel
Silicon wafers
Stainless steel 303
Stainless steel 17-4 PH
Steel 4043
Steel, machine tool
Teflon, glass filled
Various inconel metals
Zinc-plated mild steel
And many more!

EASY PROJECT SETUP

From Design to Finished Product



1 Design your graphic in your favorite graphic design software.



2 Print the design to the Epilog Laser Dashboard™.



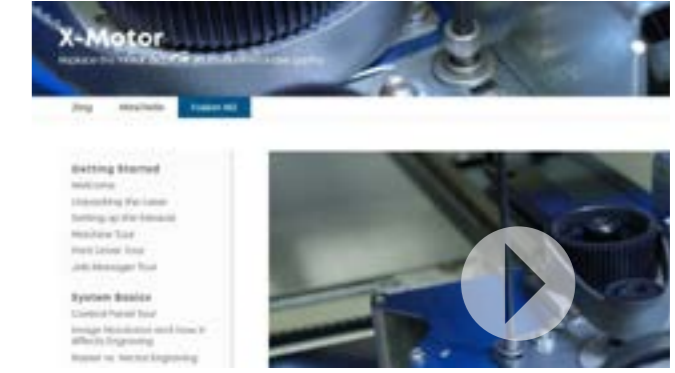
3 Choose your settings and start engraving or cutting your design.

Material Settings Library

Epilog's Material Settings Library is your first stop for finding the perfect settings for most materials. This parameter library has been built by testing materials to find the best settings for you to use with your laser system. If you discover your own preferred settings, or have a special material that you use with your laser, save your custom settings so you always have access to your favorite laser parameters at the touch of a button.

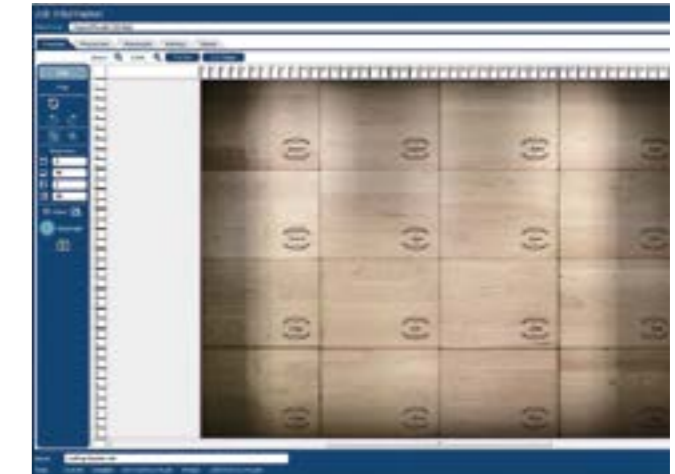
Online Training

Register your machine at our free online training suite, training.epiloglaser.com and start learning the latest tips and tricks on project setup and more. Featuring walkthrough demonstrations of how to set up projects, articles on maintenance for your machine, and a thorough library of support videos, the Epilog Laser Training Suite is your online manual for learning how to make the most of your laser system.



IRIS™ Camera Positioning & Job Trace

Positioning your image for engraving has never been easier. The Fusion Edge and Fusion Pro's IRIS™ multi-camera system shows your laser's table on screen in the Laser Dashboard™, allowing you to precisely position your image on screen, then print to the laser. You can also use the camera at the laser head on the Fusion Pro to recognize registration marks in your artwork for extremely precise engraving on preprinted pieces. To ensure your engraving is precisely positioned, run the instant Job Trace to see exactly where your image will be engraved on your product.



Fastest Engraving Speeds: Up to 165 IPS (4.2 m/s)

Higher-speed engraving means more throughput for your business. Epilog prides itself on creating machines with incredibly fast engraving times and the quickest turnaround speeds, while still providing the highest quality results. The Fusion Pro's motion control system allows the laser to reach a top speed of 165 IPS with 5g acceleration for the industry's fastest engraving. Extremely robust motors and an industrially designed motion control system allow us to reach the highest engraving speeds while still providing the high-resolution you expect from an Epilog Laser system.

Epilog Software Suite™

Epilog's powerful software suite allows you to position your artwork and duplicate your image across the screen, and access our materials database quickly and easily. Save your files to the Job Manager and you can access any job you have ever sent to the laser. Organize your jobs, rerun projects, and more.



ZING LASERS



ZING 16

Small-size, entry-level laser system that is perfect for starting a business or operating out of your home, office, or school.

- 30 or 40 watt CO₂ laser
- 16" x 12" x 4.5" (406 x 305 x 114 mm) work area
- Affordable pricing for the entry-level user



ZING 24

Larger work area and more features make this laser an affordable choice for those needing more features than an entry-level machine.

- 30, 40, 50, or 60 watt CO₂ laser
- 24" x 12" x 7.75" (610 x 305 x 197 mm) work area
- Compatible with the Rotary Attachment
- Radiance™ Beam-Enhancing Optics for a smaller laser spot size across the table

System Features

	Zing 16	Zing 24
Made-in-the-USA Quality: Designed, engineered & built in Golden, CO	•	•
Epilog Job Manager™: Management & workflow software - easily organize, edit, save & print	•	•
Laser Dashboard™: Set speed/power parameters & access more laser features	•	•
CO ₂ Laser Tubes: Long-lasting metal/ceramic tubes for highest engraving quality	•	•
Lenses Rated to 500 Watts: Highest-quality lenses provide long life & higher resolutions	•	•
High-Speed Stepper Motors: Faster stepper motors for high-resolution engraving	•	•
3D & Stamp Engraving Settings: Etch & cut stamps or create 3D curves while engraving	•	•
Super-Silent™ Cooling Fans: Quiet operation suitable for office environments	•	•
Air Assist: Remove heat & combustible gases from the cutting surface	•	•
Raster/Vector Color Mapping: Change your speed & power by using color settings	•	•
Networking Choices: USB & Ethernet connections	•	•
Moveable Home Position: Engrave odd-shaped items easily by setting a new home position	•	•
Red Dot Pointer: Provides a visible laser beam to help position projects	•	•
Easy-Access Drop-Down Door: Front access door for the laser system		•
Radiance™ Beam-Enhancing Optics: Higher-resolution optics for detailed engraving		•
Rotary Attachment Compatibility: Engrave cylindrical objects with the optional rotary		•



HELIX LASERS



HELIX

For engravers and cutters looking to work with larger pieces or products, the Epilog Helix is an ideal choice. Our most popular laser allows you to engrave thicker items, up to 11" deep. Memory in the machine improves job processing times and workflow with integrated on board 64MB of RAM in the Helix laser. The Helix features an included stand that has easily accessible shelves to hold your Cutting Table and Task Plate.

- 30, 40, 50, 60, or 80 watt CO₂ laser
- 24" x 18" x 8.5" (610 x 457 x 216 mm) work area
- Radiance™ Beam-Enhancing Optics for a smaller laser spot size across the table
- Easy-access drop-down door
- Engrave items up to 11" (279 mm) tall
- Wheeled storage stand

Accessible Design

When you are looking for a small, lightweight laser system for traveling to craft shows, trade shows, and other events, the Epilog Helix is a great choice. The rolling stand allows the laser machine to be easily moved. An integrated cutting table lets you quickly move from engraving to cutting in seconds.

- Integrated engraving and cutting tables
- Included wheeled stand
- Storage shelves to hold extra tables and products
- Easily fits through a standard door

System Features

	Helix
Made-in-the-USA Quality: Designed, engineered & built in Golden, CO	•
Epilog Job Manager™: Management & workflow software - easily organize, edit, save & print	•
Laser Dashboard™: Set speed/power parameters & access more laser features	•
CO ₂ Laser Tubes: Long-lasting metal/ceramic tubes for highest engraving quality	•
Auto Focus: Automatically focus the table to the correct focal distance	•
Integrated Cutting Table: Lifts the piece being cut to reduce back-side burning	•
Moveable Home Position: Engrave odd-shaped items easily by setting a new home position	•
Red Dot Pointer: Provides a visible laser beam to help position projects	•
Rotary Attachment Compatibility: Engrave cylindrical objects with the optional rotary	•
Raster/Vector Color Mapping: Change your speed & power by using color settings	•
Networking Choices: USB & Ethernet connections	•
Permanent Job Storage: Store as many as 10 jobs up to 2MB in size	•
Job Delete at the Laser: Delete old jobs to keep laser job queue organized	•
Radiance™ Beam-Enhancing Optics: Higher-resolution optics for detailed engraving	•
Lenses Rated to 500 Watts: Highest-quality lenses provide long life & higher resolutions	•
Linear Encoders: Highest-quality engraving from the most precise motion control system	•
High-Speed Servo Motors: Faster servo motors for high-resolution engraving	•
3D & Stamp Engraving Settings: Etch & cut stamps or create 3D curves while engraving	•
Super-Silent™ Cooling Fans: Quiet operation suitable for office environments	•
Air Assist: Remove heat & combustible gases from the cutting surface	•
Metal Bearings: Stainless steel bearings designed to last the life of the machine	•
Kevlar Belts: Our precision drive belts are made from B-style Kevlar for superior longevity	•
Crumb Tray: Easily dispose of debris from under your Cutting Table	•
Easy-Access Storage Stand: Wheeled, free-standing cart for easier access	•



FUSION EDGE LASERS



FUSION EDGE

Taking our highest-quality engraving technology and incorporating it into a small-format desktop system allows customers to get the latest technology in a transportable format. The Edge features a touch-screen display panel, on-screen camera positioning, and job trace functionality for quick and easy artwork setup.

- Available in CO₂ or fiber laser configurations
- 30 watt fiber laser
- 30, 40, 50, or 60 watt CO₂ laser
- 24" x 12" x 7" (610 x 305 x 178 mm) work area
- IRIS™ 1-camera system
- Engrave items up to 7" (178 mm) tall
- Engrave and/or cut wood, acrylic, plastic, stone, glass, and more

IRIS™ Camera Positioning

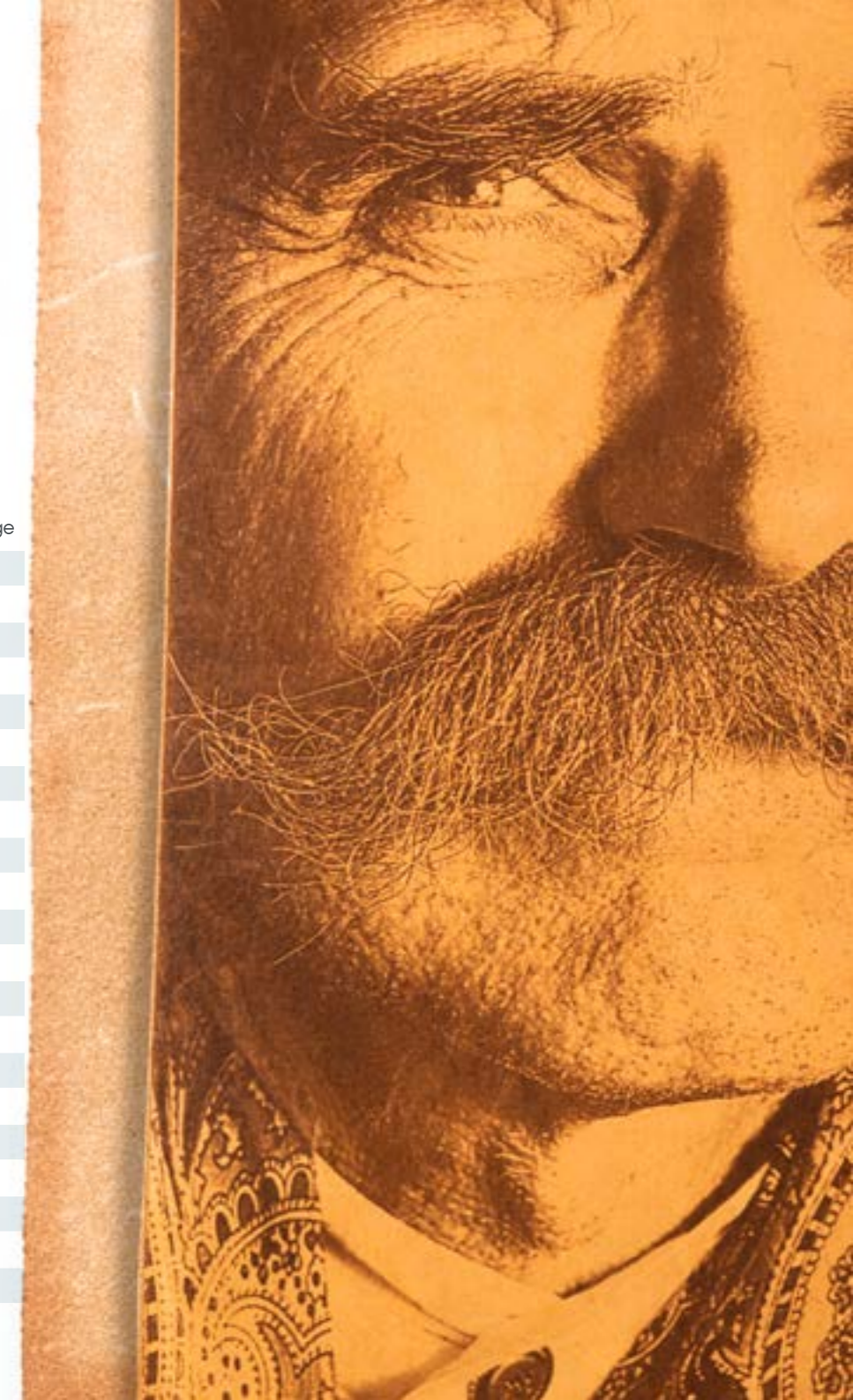
Position your artwork directly on your item using the 1-camera system of the Fusion Edge. Artwork can be quickly duplicated on screen, positioned on your product, and engraved in minutes. It's the fastest method of artwork set up available.

- Drag-and-drop functionality for positioning artwork
- Duplicate your artwork, resize it, and select cut lines on screen
- The quickest and easiest positioning system available



System Features

	Edge
Made-in-the-USA Quality: Designed, engineered & built in Golden, CO	•
Epilog Job Manager™: Management & workflow software - easily organize, edit, save & print	•
5g System Acceleration: Fast acceleration to top speed	•
IRIS™ Camera Positioning: Overhead camera for easy artwork positioning	•
SAFEGUARD™ features: Keep the mechanics cleaner and dust-free	•
Touch-Screen Control: File selection, auto-focus, and more	•
Air Assist: Remove heat & combustible gases from the cutting surface	•
Networking Choices: USB, Ethernet & Wireless connections	•
Permanent Job Storage (1 GB): Keep your most-run jobs at the machine	•
Auto Focus: Automatically focus the table to the correct focal distance	•
Software Suite: Dashboard™ and Job Manager Software Package	•
30, 40, 50, or 60 watt CO ₂ , air-cooled, metal/ceramic laser tube, 10.6 micrometers	•
or 30 watt fiber laser Source, 1064 nm	•
Radiance™ Beam-Enhancing Optics: Higher resolution optics for detailed engraving	•
Air Flow: Streamlined air flow for the most efficient smoke and vapor removal	•
High-Speed, Brushless DC Servo Motors: Withstands the most rigorous engraving jobs at high speeds	•
Red Dot Pointer: Provides a visible laser beam to help position your projects	•
Job Trace: Quickly see where the job will engrave on your material	•
Removable Front Panel: Easy access to the crumb tray	•
Super-Silent™ Cooling Fans: Quiet operation suitable for office environments	•
Rim-style Rotary Compatibility	•



FUSION PRO LASERS



FUSION PRO 32

- Available in CO₂, fiber, or dual-source configurations
- 50, 60, 80, or 120 watt CO₂ laser
- 30 or 50 watt fiber laser
- 32" x 20" (812 x 508 mm) work area
- IRIS™ 2-camera system



FUSION PRO 48

- Available in CO₂, fiber, or dual-source configurations
- 50, 60, 80, or 120 watt CO₂ laser
- 30 or 50 watt fiber laser
- 48" x 36" (1219 x 914 mm) work area
- IRIS™ 3-camera system

Industry's Highest-Speed Engraving

Introducing the fastest laser engraving systems on the market. Performance and image quality are at the heart of the Fusion Pro line of laser systems. With a maximum speed of 165 IPS (4.2m/s), and featuring 5g acceleration, the Fusion Pro lasers are the fastest, most productive laser systems available. Whether you're engraving wood, plastic, coated metals, or glass, the Fusion Pro allows you to produce more product in less time than any competitive system.

IRIS™ Camera Positioning

Positioning your artwork is easier than ever with the IRIS™ Camera Positioning feature of the Fusion Pro. Overhead cameras provide a view of your material as it is positioned on the table, allowing you to accurately place your artwork and know exactly where your laser will engrave. Drag and drop your artwork on screen to precisely position your artwork on even the most irregularly shaped objects.

System Features

	Pro 32	Pro 48
Made-in-the-USA Quality: Designed, engineered & built in Golden, CO	•	•
High Speed Engraving: Max speed of 165 IPS (4.2 m/s)	•	•
5g System Acceleration: Fast acceleration to top speed	•	•
IRIS™ Camera Positioning: Overhead cameras & camera at the carriage for artwork positioning	•	•
SAFEGUARD™ features: Keep the mechanics cleaner and dust-free	•	•
Touch-Screen Control: File selection, auto-focus, and more	•	•
Air Assist & Compressor: Remove heat & combustible gases from the cutting surface	•	•
Vacuum Hold-Down Table: Exhaust under the table	•	•
Networking Choices: USB & Ethernet connections	•	•
Permanent Job Storage (1 GB): Keep your most-run jobs at the machine	•	•
Auto Focus: Automatically focus the table to the correct focal distance	•	•
Software Suite: Dashboard™ and Job Manager™ Software Package	•	•
50, 60, 80, or 120 watt CO ₂ , air-cooled, metal/ceramic laser tube, 10.6 micrometers	•	•
or 30 or 50 watt fiber laser Source, 1064 nm	•	•
or Dual Source configuration	•	•
Radiance™ Beam-Enhancing Optics: Higher resolution optics for detailed engraving	•	•
Laminar Air Flow: Streamlined air flow for the most efficient smoke and vapor removal	•	•
High-Speed, Brushless DC Servo Motors: Withstands the most rigorous engraving jobs at high speeds	•	•
Red Dot Pointer: Provides a visible laser beam to help position your projects	•	•
Job Trace: Quickly see where the job will engrave on your material	•	•
Easy-Access Drop-Down Door: Front access door for the laser system	•	•
Super-Silent™ Cooling Fans: Quiet operation suitable for office environments	•	•
Rim-style Rotary Compatibility	•	•



ACCESSORIES

Air Compressor

Epilog's optional Air Compressor is available to work with the included Air Assist feature of the laser systems. Direct a constant stream of air to your cutting surface to remove heat and combustible gases from the work area. This high-quality air compressor unit feeds 30 psi (2.07 bar) of air through the Air Assist structure, giving you the best cutting results available. The vibration-dampening rubber feet reduce the noise level of the compressor.



Cutting Tables

Incorporate the gridded cutting table when cutting through materials. By raising the materials off of the table when cutting, you'll be able to reduce any back-side burning on the material.



For cutting through materials on the Fusion Pro, choose between a traditional cutting-grid table or a slat table.



Rotary Attachments

Add the ability to engrave cylindrical items to your laser, including glasses, bottles, and more. Epilog offers two types of Rotary Attachments. The Standard Rim-Style Rotary is great for general-purpose cylindrical shapes, including glasses, mugs and wine bottles. We offer the 3-Jaw Chuck Rotary Attachment for more demanding applications when you need to mechanically clamp a cylinder or oddly shaped, non-cylindrical item.



Lens Options

1.5" Lens: Highest-Resolution Engraving

Although the standard 2.0" lens provides amazing detail, our 1.5" lens assembly has been designed for the highest-resolution engraving and etching of extremely small fonts.



4.0" Lens: Cutting Thicker Materials and Inside Deep Areas

The 4.0" lens produces a focused beam over a longer vertical distance, which makes it ideal when engraving within a recessed area of a product, such as inside a bowl or plate. The lens is also useful for cutting through very thick materials with a more elongated beam.



Pin Table

The Pin Table incorporates moveable pins designed to raise and support material during cutting. This helps ensure you receive the cleanest laser cut edges from your laser machine. Use the Pin Table with the Fusion Pro's IRIS™ camera system for a visual representation of each pin's precise location for the highest quality edge cuts on a laser system.



TECH SPECS



Zing 16



Zing 24



Helix



Fusion Edge (CO₂)

Fusion Edge (Fiber)



Fusion Pro 32 (CO₂)

Fusion Pro 32 (Fiber)



Fusion Pro 48 (CO₂)

Fusion Pro 48 (Fiber)

	Zing 16	Zing 24	Helix	Fusion Edge (CO ₂)	Fusion Edge (Fiber)	Fusion Pro 32 (CO ₂)	Fusion Pro 32 (Fiber)	Fusion Pro 48 (CO ₂)	Fusion Pro 48 (Fiber)	
Work Area	16"x12" (406x305 mm)	24"x12" (610x305mm)	24"x18" (610x457mm)		24"x12" (610x305mm)	32"x20" (812x508mm)		48"x36" (1219x914mm)		
Max Material Thickness	4.5" (114mm)	7.75" (197mm)	8.5" (216mm). Remove table for 11" (279mm) depth & 23.5"x17" (597x432mm) work area		7" (178mm)	12.25" (311mm)				
Laser Tube Wattages	30 & 40 watt, CO ₂ , air-cooled, metal/ceramic tube, 10.6 micrometers	30, 40, 50 & 60 watt, CO ₂ , air-cooled, metal/ceramic tube, 10.6 micrometers	30, 40, 50, 60, & 80 watt, CO ₂ , air-cooled, metal/ceramic tube, 10.6 micrometers		30, 40, 50 & 60 watt, CO ₂ , air-cooled, metal/ceramic tube, 10.6 micrometers	30 watt, fiber, air-cooled, includes collimator, 1064nm. Beam quality: M2 < 1.1	50, 60, 80, or 120 watt, CO ₂ , air-cooled, metal/ceramic tube, 10.6 micrometers	30 or 50 watt, fiber, air-cooled, includes collimator, 1064nm. Beam quality: M2 < 1.1	50, 60, 80, or 120 watt, CO ₂ , air-cooled, metal/ceramic tube, 10.6 micrometers	30 or 50 watt, fiber, air-cooled, includes collimator, 1064nm. Beam quality: M2 < 1.1
Software	Laser Dashboard™, Epilog Job Manager™				Laser Dashboard™, Epilog Job Manager™					
Memory	Multiple files up to 64MB. Engrave any file size				Multiple files up to 1GB. Engrave any file size					
Modes	Optimized raster, vector & combined mode				Optimized raster, vector & combined mode					
Motion Control	High-speed micro stepper motors		High-speed, continuous-loop, DC servo motors using linear and rotary encoding technology for precise positioning		High-speed, continuous-loop, brushless DC servo motors using rotary encoding tech for precise positioning					
X-Axis Bearings	Shielded roller bearing assembly on a ceramic-coated aluminum guide rail		Ground & polished stainless steel long-lasting bearing system		Ground & polished stainless steel, teflon-coated, self-lubricating bearings.	Ground & polished stainless steel, teflon-coated, self-lubricating bearings. Dual blocks on X-axis for greater rigidity				
Belts	Advanced B-style Kevlar belts		Advanced B-style double-wide Kevlar precision drive belts		Advanced B-style double-wide Kevlar precision drive belts					
Resolution	User-controlled 100-1000dpi		User-controlled 75-1200dpi		User-controlled 75-1200dpi					
Speed & Power	Computer-controlled speed & power in 1% increments up to 100%. Color mapping feature links speed, power, frequency, & raster/vector mode settings to any RGB color		Computer-controlled speed & power in 1% increments up to 100%. Color mapping feature links speed, power, frequency, raster/vector mode, & air assist on/off settings to any RGB color		Computer-controlled speed & power in .001 increments up to 100%. Color mapping feature links speed, power, frequency, and raster/vector mode.	165 IPS (4.2m/s) with 5g acceleration. Computer-controlled in .001 increments up to 100%. Color mapping feature links speed, power, frequency, & raster/vector mode				
Print Interface	USB & 10Base-T Ethernet connections. Windows 7/8/10 compatible				USB, Wireless, & 10Base-T Ethernet connections. Windows 7/8/10 compatible		USB & 10Base-T Ethernet connections. Windows 7/8/10 compatible			
Size (W x D x H)	28.75"x22.125"x12.5" (730x562x318mm)	38"x27.25"x15" (965x692x381mm)	36.5"x32"x39.8" (927x813x1011mm)		39.5"x26.5"x17.9" (1003x673x455mm)	54.6"x34.2"x42" (1387x869x1067mm)		70.6"x51.3"x42.75" (1794x1304x1086mm) Pedestal removed: 34"h (863mm)		
Weight	95lbs (43kg)	140lbs (64kg)	180lbs max (82kg)		138lbs (63kg)	400lbs (182kg)		650lbs (295kg)		
Electrical	Auto-switching power supply 110-240volts, 50 or 60Hz, single phase				Auto-switching power supply 110-240volts, 50 or 60Hz, single phase			220/240volts, 50 or 60Hz, single phase		
Ventilation System	350-400CFM (595-680m ³ /hr) external exhaust to outside or internal filtration unit required. One output port, 4" (102mm) in diameter				350-400CFM (595-680m ³ /hr) external exhaust to outside or internal filtration unit required. One output port, 4" (102mm) diameter	One upper output port. One lower port. Total 735CFM. All ports 4" (102mm) diameter		Two upper output ports. One lower port. Total 735CFM. All ports 4" (102mm) diameter		
Class	Class 2 Laser Product - 1 mW CW MAXIMUM 600-700nm				Class 2 Laser Product - 1 mW CW MAXIMUM 600-700nm					

Technical specifications and product configurations subject to change without notice.



888.437.4564 | sales@epiloglaser.com | 16371 Table Mountain Parkway, Golden, CO, 80403

