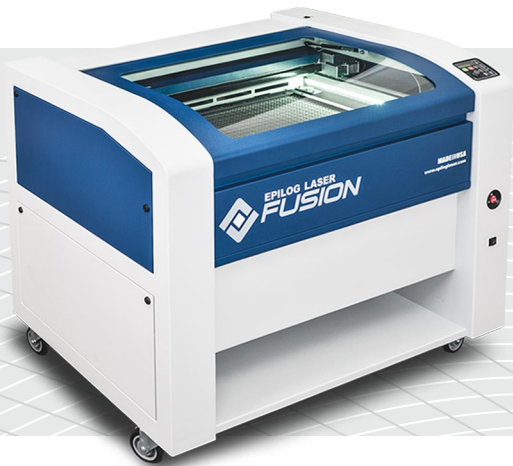




EPILOG LASER

Job Manager Instructions



Technical Support: +1 (303) 215-9171

Knowledge Base: support.epiloglaser.com

Driver/Firmware Download: epiloglaser.com/tech-support/epilog-drivers.htm

English

EPILOG JOB MANAGER INSTALLATION

Epilog Job Manager Instructions

Epilog Job Manager Instructions

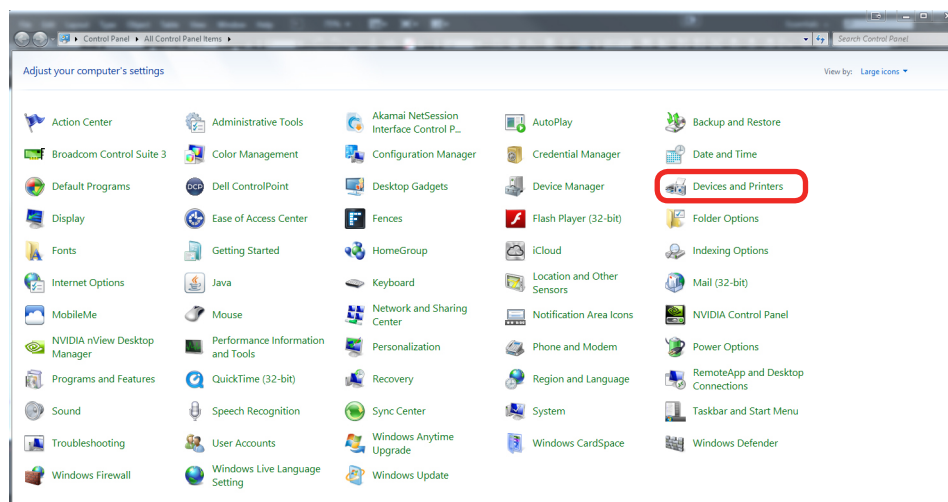
The Epilog Job Manager is a powerful new tool that will quickly become one of your favorite features on the Fusion Laser. From one piece of software, you can access any job you have sent to the laser, view the settings you used on any past job, re-run projects, access your material database, and much more. It's a great addition to the Fusion product features, and we look forward to seeing how our customers use this software!

- **The Fusion Job Manager only works through the Ethernet port of your laser system.** If you are currently using the USB to drive your Fusion, you will need to install the laser as an Ethernet printer.
- **Fusion Driver 1.053 is required** to use the Job Manager. The installation instructions are below.
- **You must unplug the USB cable** from the back of your laser system before installing the Epilog Job Manager. Once you have installed the Epilog Job Manager, you can reinsert the USB cable into the back of your laser system if you want to use the Epilog Control Center (ECC).
- **Windows 7/8/8.1 is required** to use the Epilog Job Manager.
- Before you install the new driver you will need to decide if there are any configuration files you want to save. **Configuration files (.dat files) that were created using the old driver cannot be opened in the new driver.** If you have configuration files with settings that need to be saved you will need to open the files in the old driver, manually record the settings for each file you want to save and then recreate the configuration file in the new driver. Once you have your old configuration files saved you can install the new driver.

Windows 7: Print Driver Ethernet Installation

Installing the Laser Dashboard Print Driver

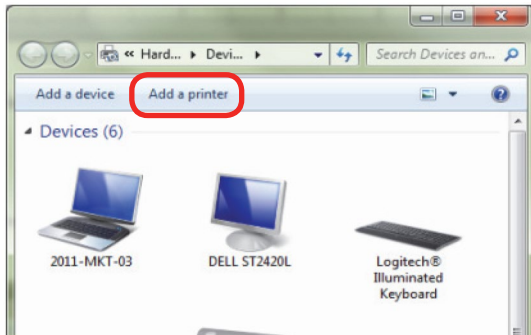
1. Go to your Control Panel and select **Devices and Printers**.



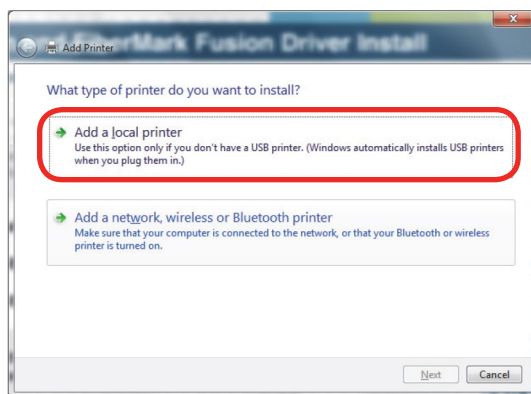
EPILOG JOB MANAGER INSTALLATION

Windows 7: Print Driver Ethernet Installation

2. Click **Add a Printer**.



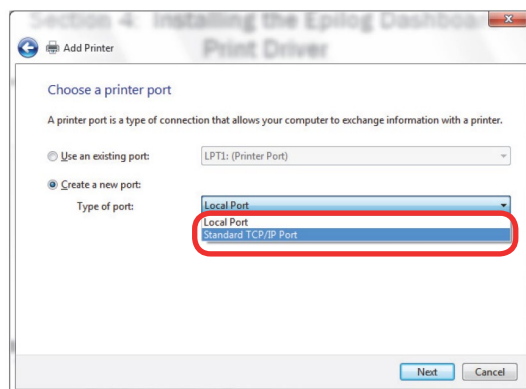
3. Click **Add a local printer**.



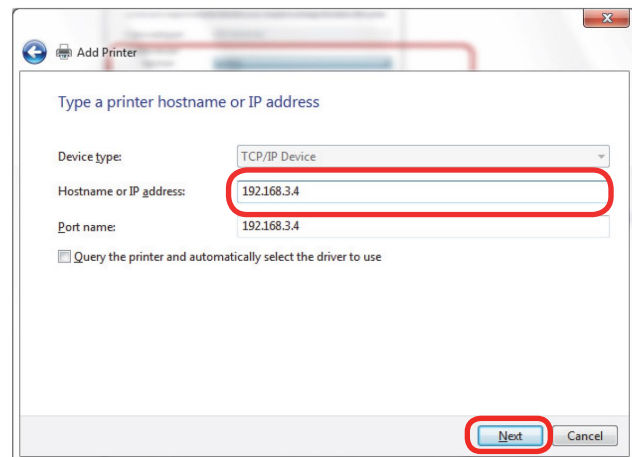
4. Click **Create New Port**, then click on the drop-down menu and select **Standard TCP/IP Port**.



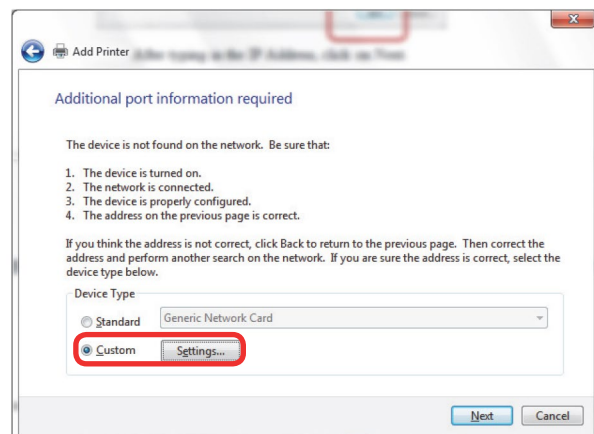
If you are using an existing port, you can choose **Use an existing port** and skip to Step 9.



5. Enter the IP Address you want to use. Most Epilog users will use the IP Address of 192.168.3.4, which is what we use in this document. Whatever number you use, **it must be the same number that you set as the IP Address using the Fusion laser keypad or the ECC**. After typing in the IP Address, click Next. Wait while the computer identifies the port.



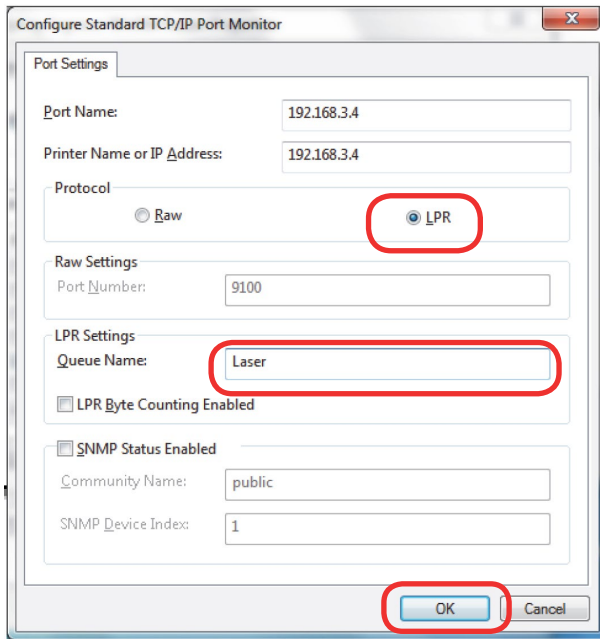
6. Select **Custom** and then **Settings**.



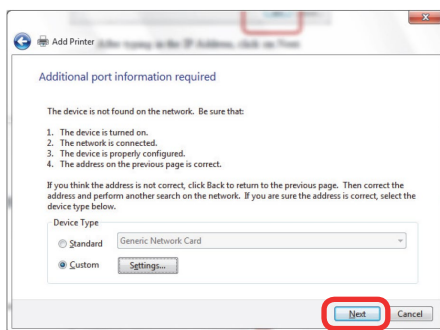
EPILOG JOB MANAGER INSTALLATION

Windows 7: Print Driver Ethernet Installation

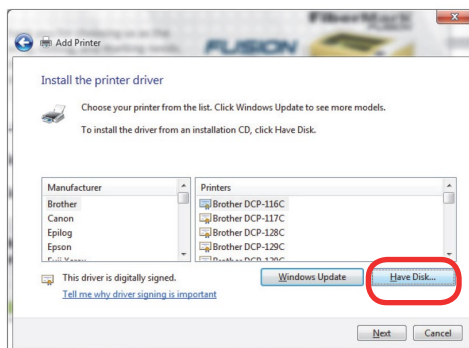
7. **Set Protocol to LPR.** This is a very important step. Your download time will increase significantly if LPR is not selected. Type **Laser** into the Queue Name, then click **OK**.



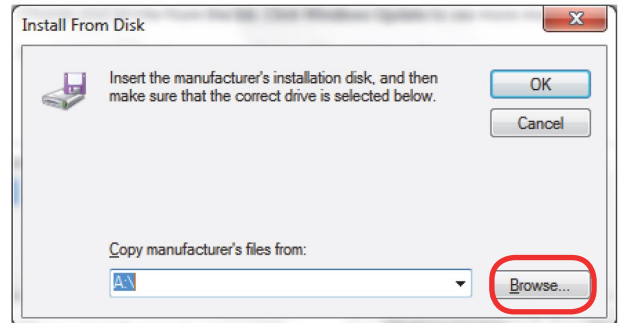
8. Click **Next**.



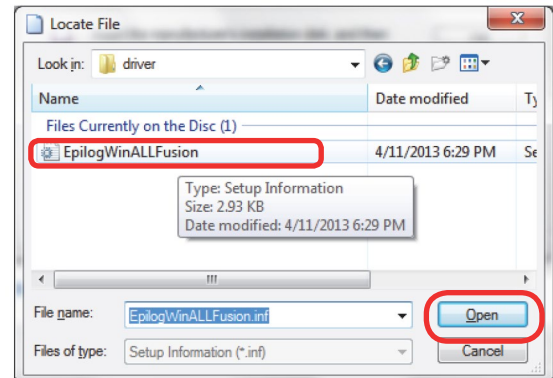
9. Click **Have Disk**.



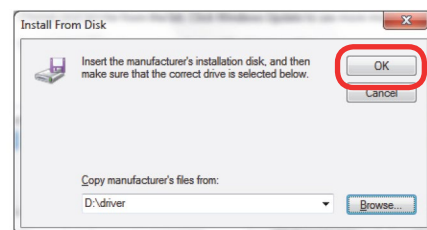
10. Click **Browse** and go to the folder where you saved the Fusion driver and click **Open**.



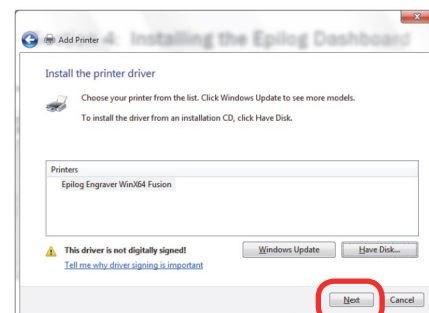
11. Click on the **EpiLogWinALLFusion** file and click **Open**.



12. Click **OK**.



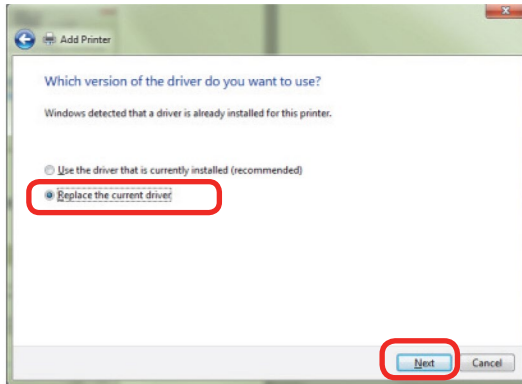
13. Click **Next**.



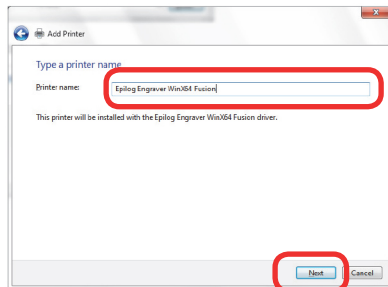
EPILOG JOB MANAGER INSTALLATION

Windows 7: Print Driver Ethernet Installation

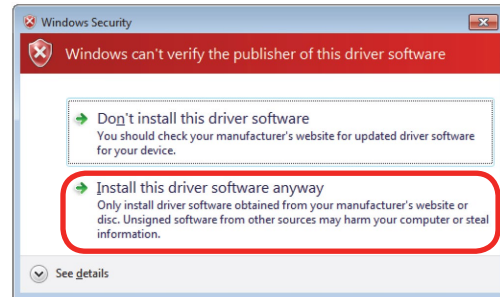
14. Click **Replace the current driver** if requested, then click **Next**.



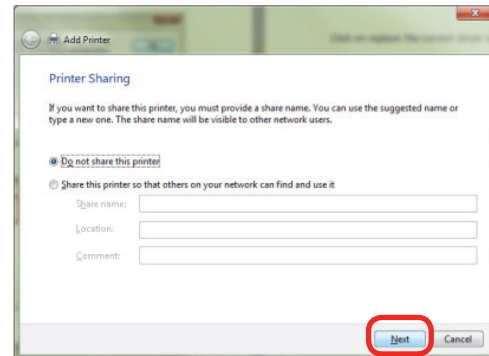
15. You can rename your printer here. We have not changed it for this document, but many users like to associate the driver name with the IP Address they are using, for example Fusion 192.168.3.4. This is especially helpful if there is more than one laser connected to a single computer. Click **Next**.



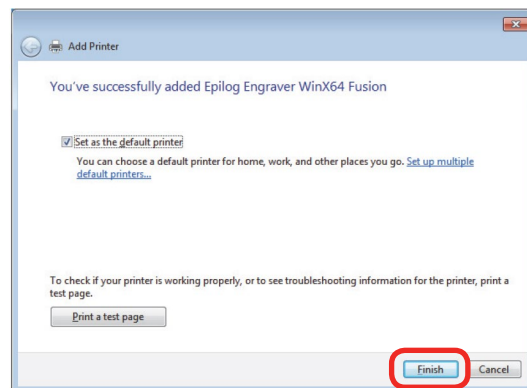
16. Click on **Install this driver software anyway**.



17. Click **Next**.



18. Click **Finish**. That's it, your driver is installed! Now go to **Page 12: How to Install the Epilog Job Manager**.



EPILOG JOB MANAGER INSTALLATION

Windows 8 and 8.1: Print Driver Ethernet Installation

Windows 8 and 8.1: Print Driver Ethernet Installation

Please follow these instructions closely! Using a different process to install the Dashboard driver is likely to fail if you are using Windows 8. The process includes the following steps:

1. Turning off the Driver Signature Enforcement
2. Laser Dashboard Driver Installation



You must unplug the USB cable from the back of your laser systems before installing the Fusion driver and Job Manager onto your computer. Once you have installed the driver and Job Manager, you can reinsert the USB cable on your laser system.

Step 1: Turning off the Driver Signature Enforcement

Before you can install the 64-bit Epilog Dashboard Driver in Windows 8 or 8.1, the Driver Signature Enforcement feature must be disabled, then you will be able to proceed using standard Windows driver installation protocol. Once the Dashboard Driver is installed for the first time you can install new versions without having to disable the Driver Signature Enforcement again.

1. Open the Charms Bar and select **Settings**. The Charms Bar is displayed by moving your mouse cursor into the lower right corner of your display.



2. Select **Change PC Settings**.



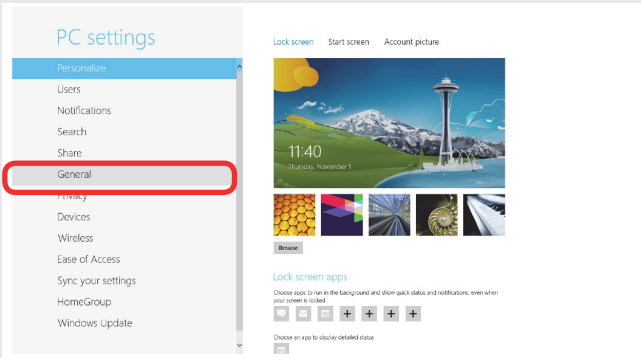
EPILOG JOB MANAGER INSTALLATION

Windows 8 and 8.1: Print Driver Ethernet Installation

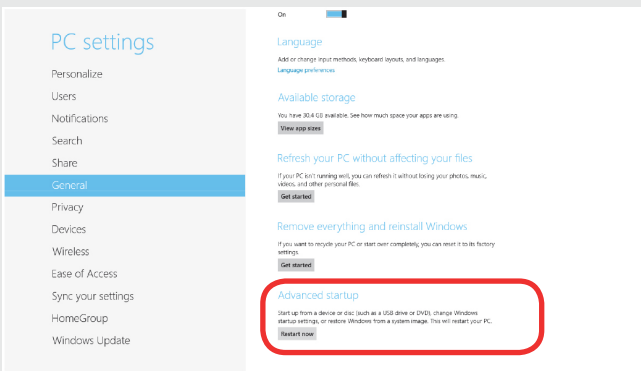
Windows 8 and 8.1 have different paths to disable the Driver Signature. Choose your operating system:

Windows 8

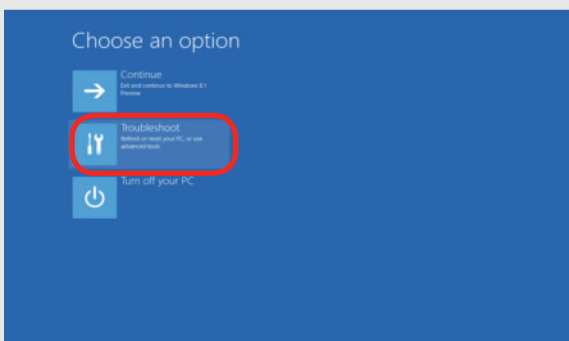
Select **General**.



Scroll to the bottom of the General page. Under “Advanced Start-Up” select **Restart Now**.

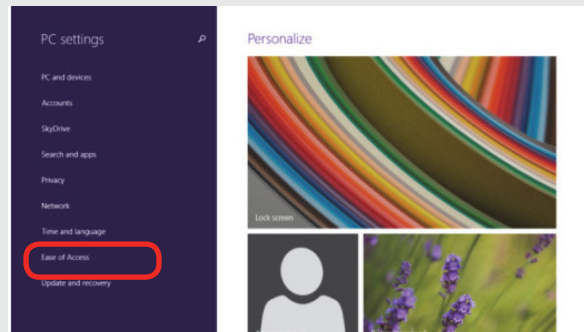


Select **Troubleshoot**.

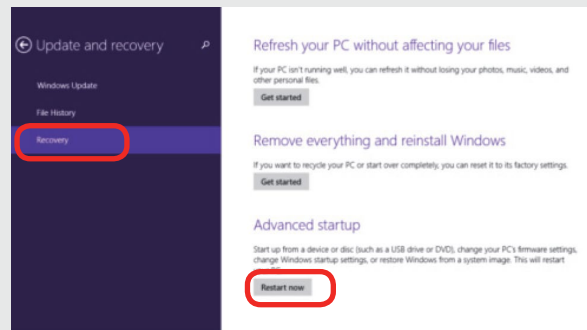


Windows 8.1

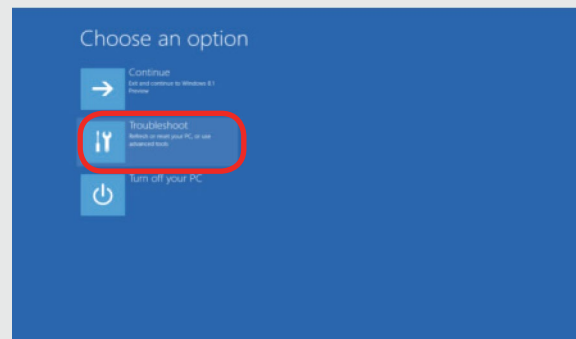
Select **Update and Recovery**.



Click on the Recovery option, which will bring up more options. In the **Advanced Startup** section click **Restart Now**.



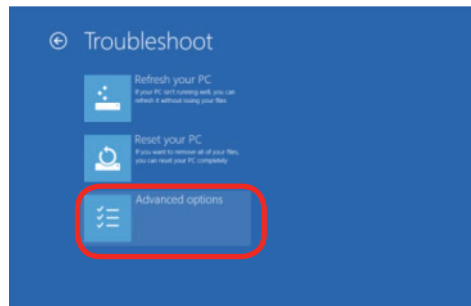
Select **Troubleshoot**.



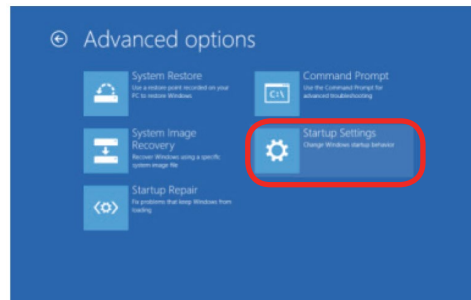
EPILOG JOB MANAGER INSTALLATION

Windows 8 and 8.1: Print Driver Ethernet Installation

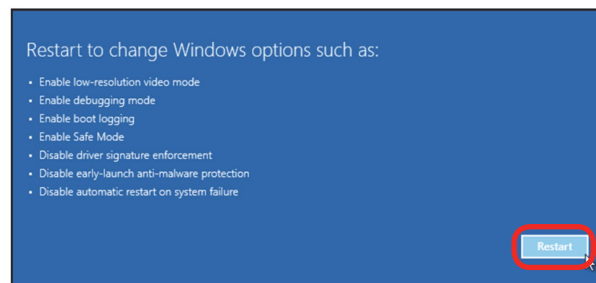
- The next steps are identical in Windows 8 and 8.1. Select **Advanced Options**.



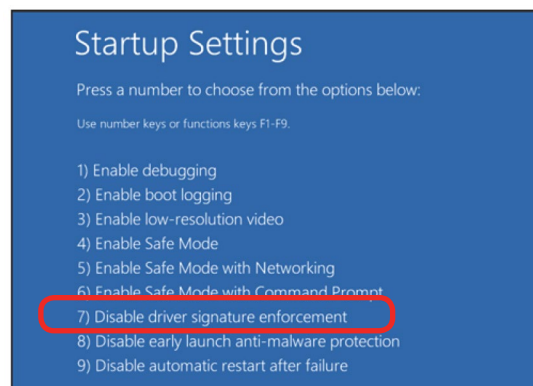
- Select **Startup Settings**.



- Select the **Restart** button.



- On the next screen, press either the **F7** key or the **number 7** key from your computer keyboard. This selection disables the Driver Signature Enforcement which will then allow you to install a printer driver. After pressing either key your computer will reboot. Now, Login as normal to install the driver.



EPILOG JOB MANAGER INSTALLATION

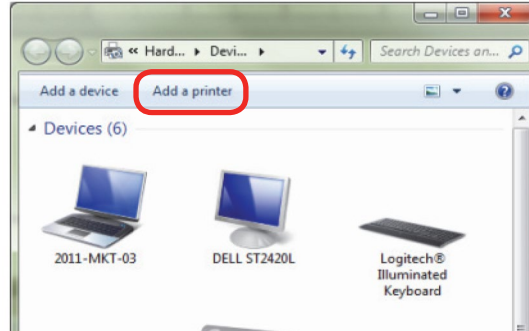
Windows 8 and 8.1: Print Driver Ethernet Installation

Step 2: Installing the Dashboard Driver

1. On your Start Screen start typing “devices and printers” (the text box will appear when you start typing). Select **Devices and Printers** from the list of items that appears.



2. Click **Add a printer**.



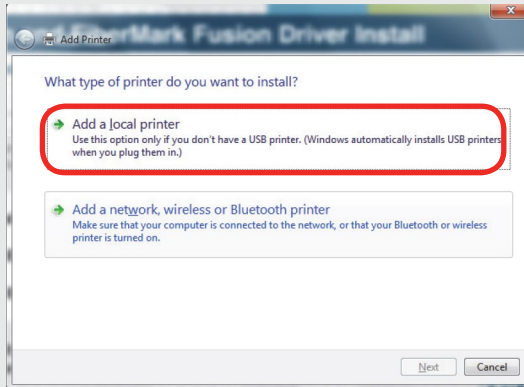
EPILOG JOB MANAGER INSTALLATION

Windows 8 and 8.1: Print Driver Ethernet Installation

Windows 8 and 8.1 have different paths. Choose your operating system:

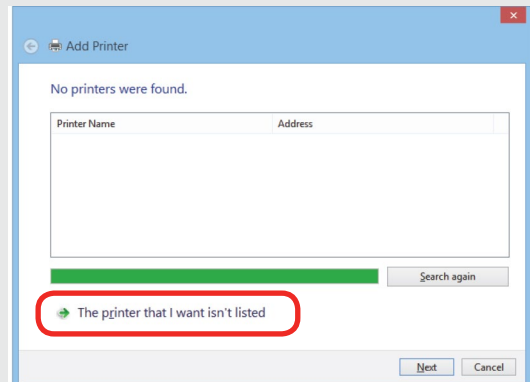
Windows 8

Select **Add a Local Printer**.

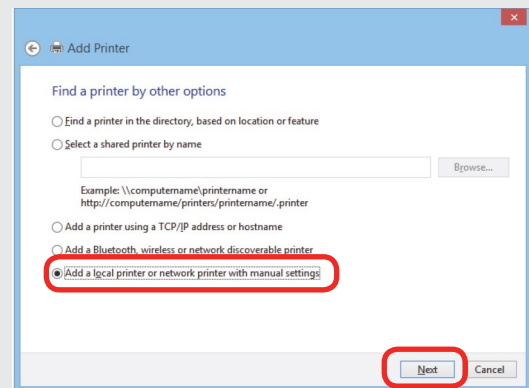


Windows 8.1

Select **The printer that I want isn't listed**.



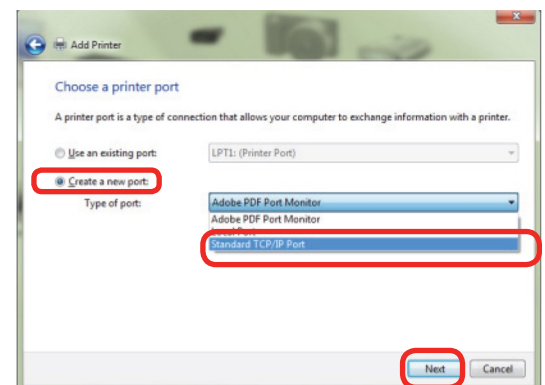
Click **Add a local printer or network printer with manual settings**. Click **Next**.



- The next steps are identical in Windows 8 and 8.1 Click on **Create a New Port**, then click on the drop-down menu. Select **Standard TCP/IP Port**. Click **Next**.



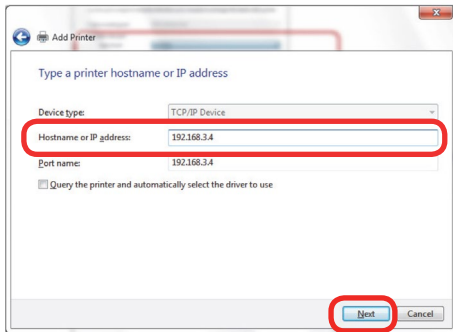
If you are using an existing port, you can choose **Use an existing port** and skip to Step 7.



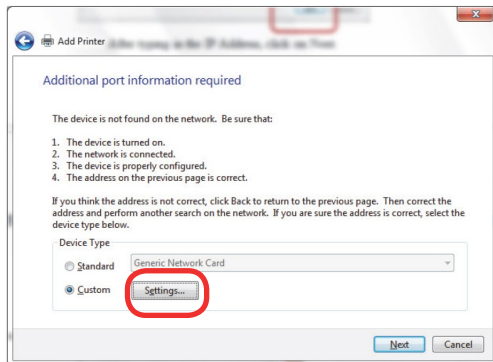
EPILOG JOB MANAGER INSTALLATION

Windows 8 and 8.1: Print Driver Ethernet Installation

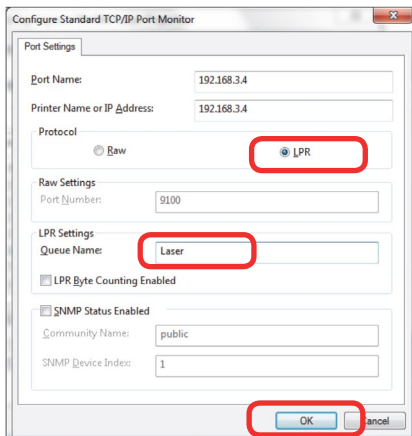
4. Enter the IP Address you want to use. Most Epilog users will use the IP Address of **192.168.3.4**, which is what we use in this document. Whatever number you use, **it must be the same number** that you set as the IP Address using the Fusion laser keypad or the ECC. After typing in the IP Address, click on **Next**. Wait while the computer identifies the port.



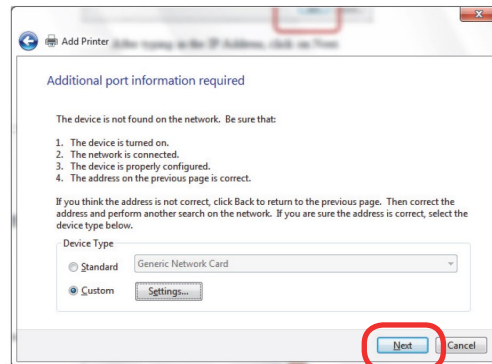
5. Select **Custom**, then **Settings**.



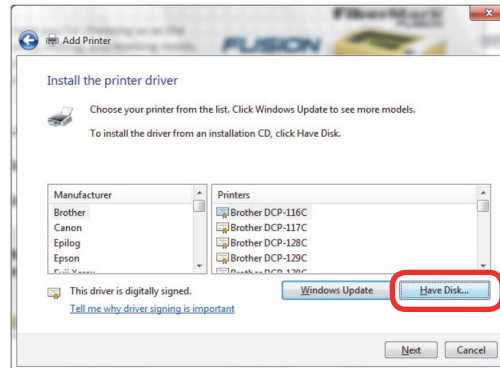
6. **Set Protocol to LPR**. This is a very important step. Your download time will be greatly increased if LPR is not selected. Type **Laser** into the Queue Name. Click **OK**.



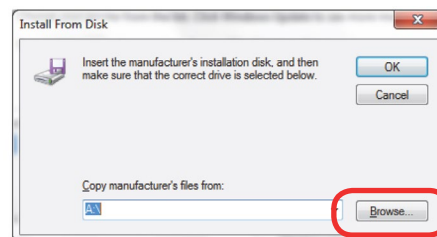
7. Click **Next**.



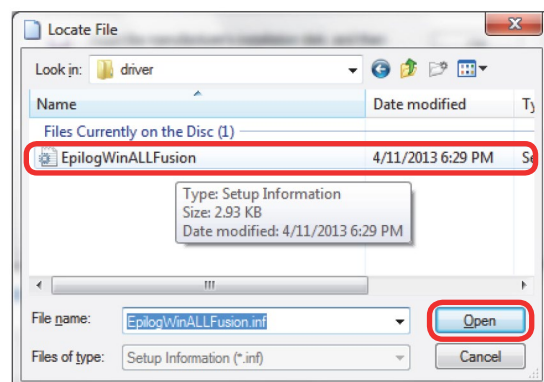
8. Click **Have Disk**.



9. Click **Browse**, browse to the folder where you saved the download.



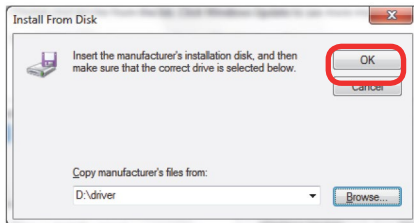
10. Click on the **EpilogWinALLFusion** file and then click **Open**.



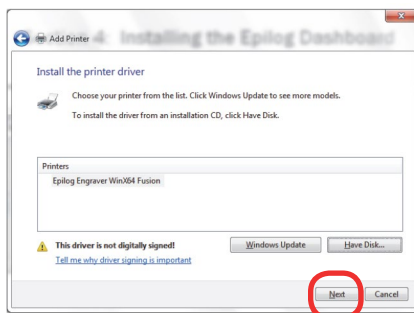
EPILOG JOB MANAGER INSTALLATION

Windows 8 and 8.1: Print Driver Ethernet Installation

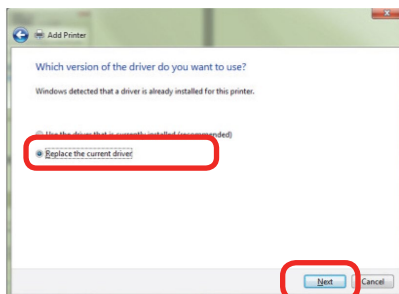
11. Click **OK**.



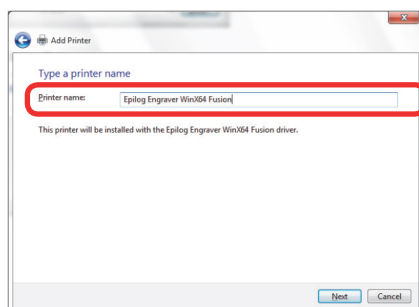
12. Click **Next**.



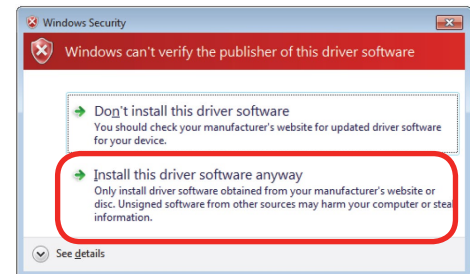
13. Click **Replace the current driver** if requested and click **Next**.



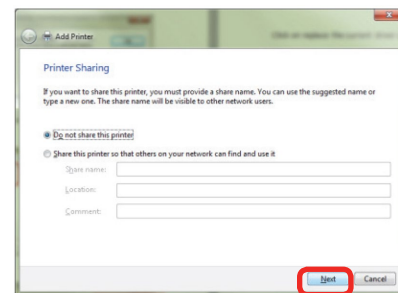
14. You can rename your printer here. We have not changed it for this document, but many users like to associate the driver name with the IP Address they are using, especially if there is more than one laser connected to a single computer. For example, we might rename the driver **Fusion 192.168.3.4**. Click **Next**.



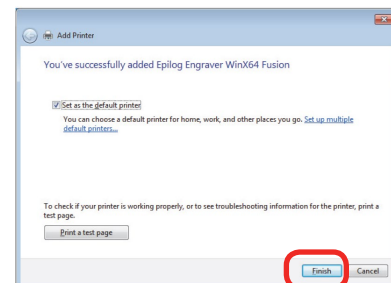
15. Click **Install this driver anyway**.



16. Click **Next**.



17. Click **Finish** and your driver is installed. Now continue to the next page to install the Epilog Job Manager.



EPILOG JOB MANAGER INSTALLATION

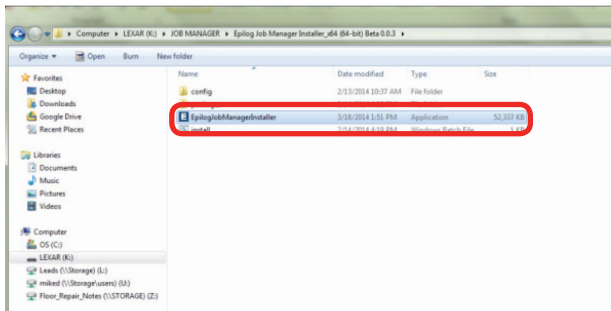
How to Install the Epilog Job Manager

How to Install the Epilog Job Manager

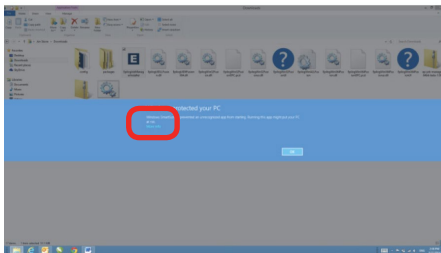


If using the USB connection, **you must unplug the USB** from the back of the laser before installing the Epilog Job Manager.

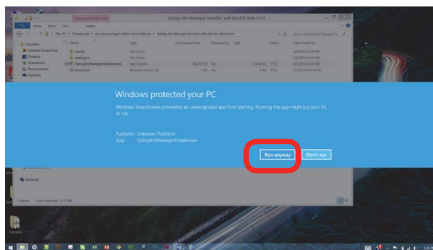
1. After downloading the Job Manager from epiloglaser.com/tech-support/drivers.htm, access the Epilogjobmanagerinstaller.exe. **Double click** to start.



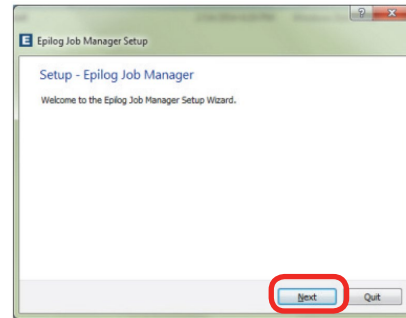
2. In Windows 8 or 8.1 you **may** see this message. Click **More Info**.



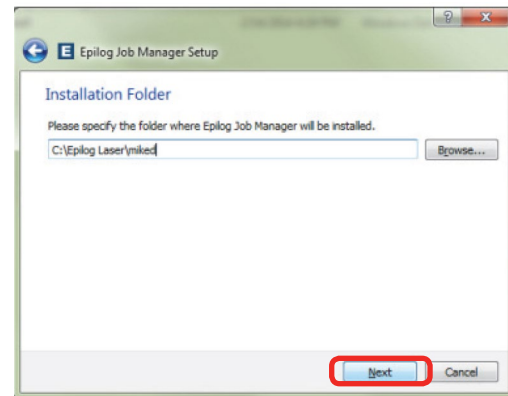
3. Click **Run Anyway**.



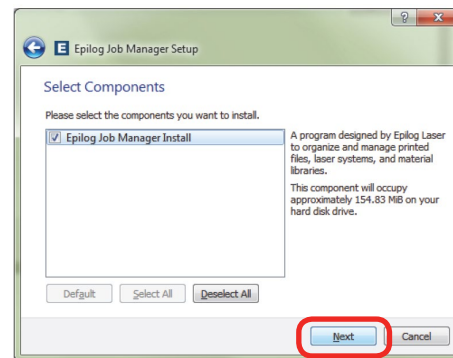
4. Click **Next**.



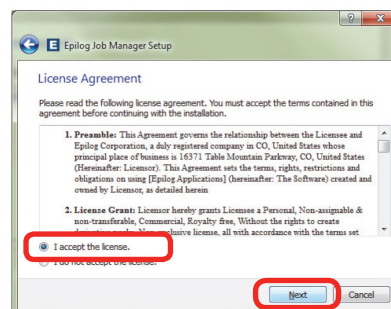
5. Click **Next**



6. Click **Next**.



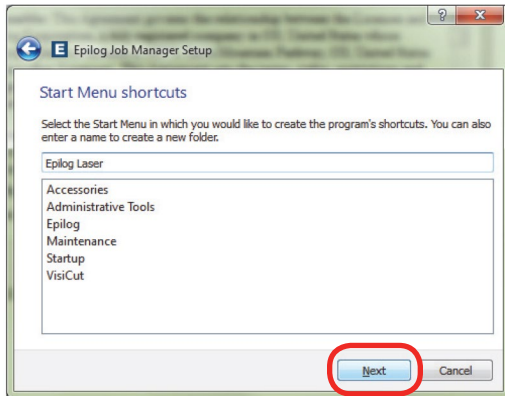
7. **Accept the license**, then click **Next**.



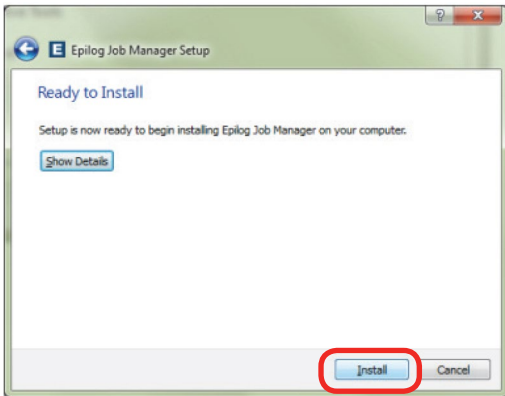
EPILOG JOB MANAGER INSTALLATION

How to Install the Epilog Job Manager

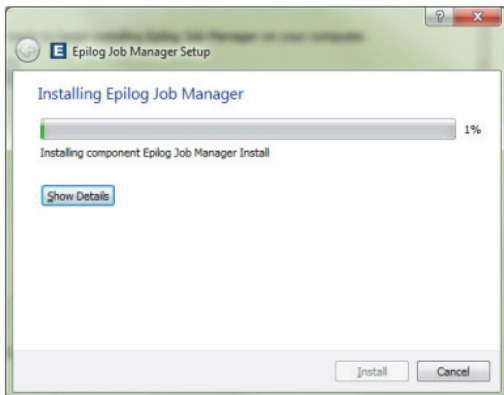
8. Click **Next**.



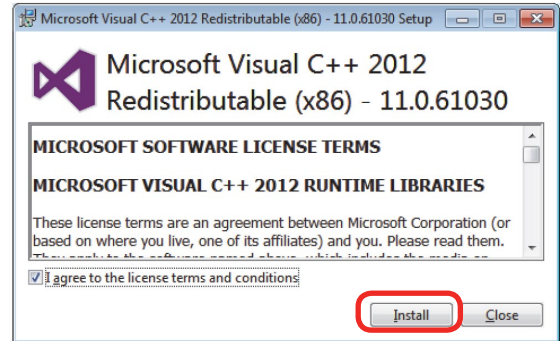
9. Click **Install**.



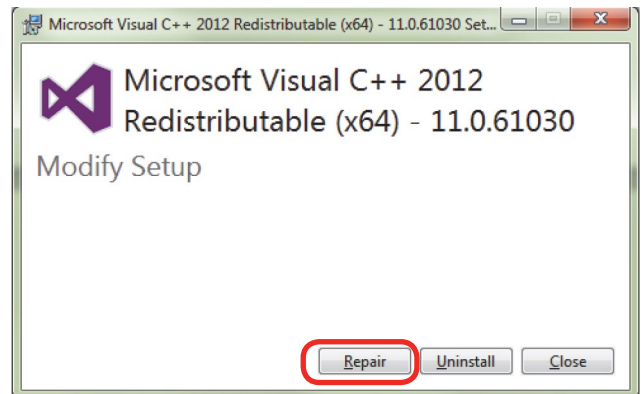
10. The installation will take a few moments.



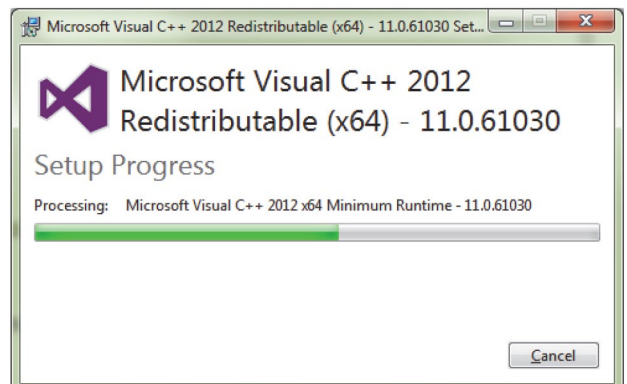
11. You **may** be asked to install the Microsoft Visual C++ Program. This program is required to operate the Job Manager. **Agree to the license** and click **Install**.



12. There is a possibility that this program is already installed on your computer. If it is, you will be asked to Repair, Uninstall, or Close. Choose **Repair**.



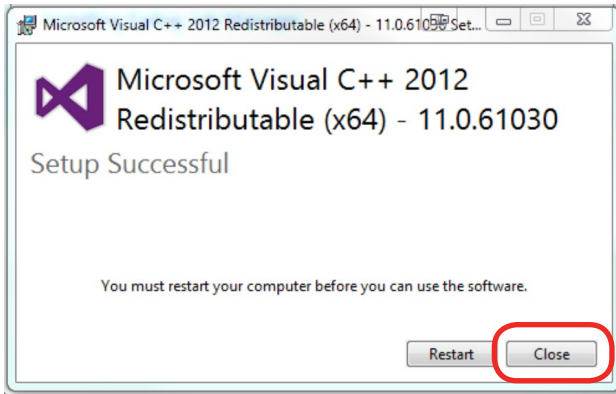
13. You will see this progress window. Please be patient, as it takes a minute or so before the progress bar appears.



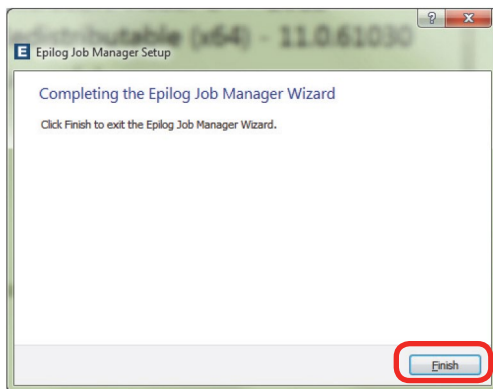
EPILOG JOB MANAGER INSTALLATION

Trouble Shooting Job Manager Installation

14. Once the Microsoft program is installed, click **Close**.



15. Click **Finish** and the Job Manager is installed.



16. A Job Manager icon will be automatically added to your Desktop. You are now ready to use the Job Manager.



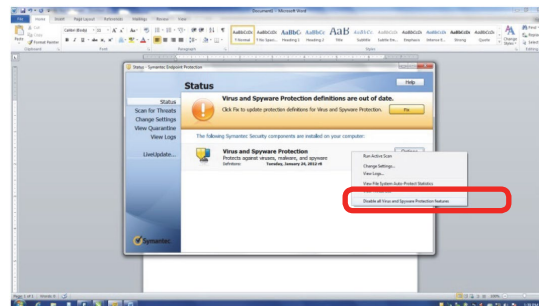
Trouble Shooting Job Manager Installation

If you were unable to install the Job Manager it's possible that your Anti-Virus software is blocking installation.

To disable Symantec Anti-Virus software, choose **Options**. Other anti-virus packages should have something similar to Symantec.



Disable all Virus and Spyware Protection Features. After the Job Manager has been installed go back into your Anti-Virus software and re-enable the setting that was disabled.



HOW TO USE THE EPILOG JOB MANAGER

Important Notes

We are proud to introduce the Beta version of the Epilog Job Manager for the Fusion Laser Series. Testing to date has shown it is very robust, but a little time in the field will validate our testing before official release. The beta versions are:

1. **Driver: 1.053 Beta**
2. **Job Manager: Beta 0.0.4**

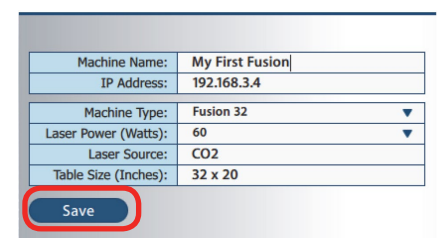
Important Notes

- The Fusion Job Manager works only through the Ethernet port of your laser system. Jobs printed through the USB connection will not show up in the Job Manager.
- The Job Manager requires Fusion Driver 1.053 or later. Early versions of the Fusion driver will not communicate with the Job Manager. It does not matter which order the driver or manager is installed.
- Before you install the new driver you will need to decide if there are any configuration files you want to save. **Configuration files (.dat files) that were created using the old driver cannot be opened in the new driver.** If you have configuration files with settings that need to be saved you will need to open the files in the old driver, manually record the settings for each file you want to save and then recreate the configuration file in the new driver. Once you have your old configuration files saved you can install the new driver.
- Once you have installed the Fusion driver and Job Manager you can reinsert the USB cable into the back of your Fusion Laser system to use the Epilog Control Center. The ECC is still a valuable resource until we include the next two items into our Job Manager, the Job time estimator and Maintenance Tab.

Using the Epilog Job Manager

Activate a Laser

1. The first time you open the Job Manager you'll see each of the Fusion models. You will need to activate your laser system to get started. **Click to highlight your Fusion model.** You can activate multiple machines if you have more than one Fusion.
2. To activate your machine, give your machine a name, set the IP Address, laser wattage, etc. It's important that you identify the proper laser power of your system. The wattage specified automatically loads the proper Material Setting files. Click **Save**. Your machine configuration has been saved and the Material Settings for your laser model and power have been pre-installed in the Material Settings tab.



HOW TO USE THE EPILOG JOB MANAGER

Using the Epilog Job Manager

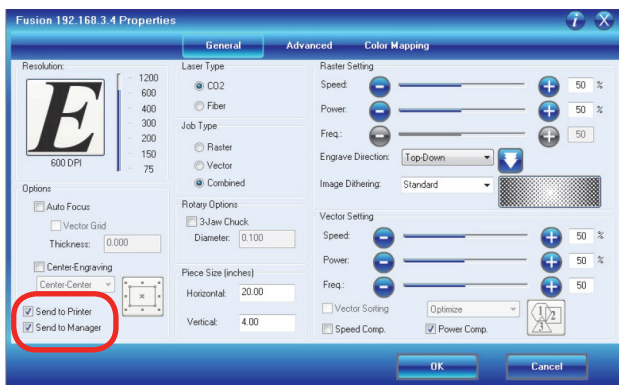
3. Your new laser has been activated in the Job Manager and appears in the left panel. Use the **Add or Delete** buttons to add additional machines or to remove a laser. The Job Manager is now ready to accept jobs from the print driver.



Printing to the Epilog Job Manager

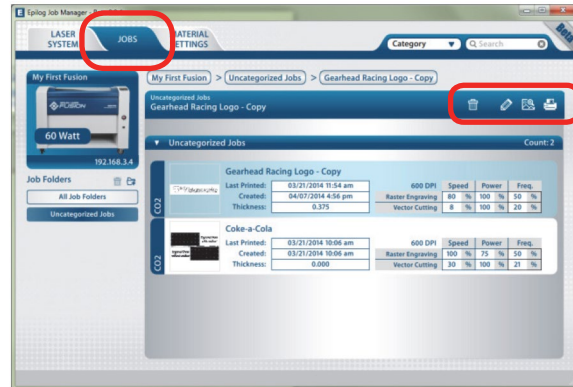
Create a file in your graphic software and set your laser parameters in the print driver.

In the driver you'll see a new selection available under the Center-Engraving area. You can choose to print to either the printer (your Fusion Laser), the Job Manager, or both. This allows you to send your job to the Job Manager without sending it to the laser so you can then print that job directly from the Job Manager at a later time without accessing your graphic software. This is an easy way to set up an entire day's jobs all in one place!



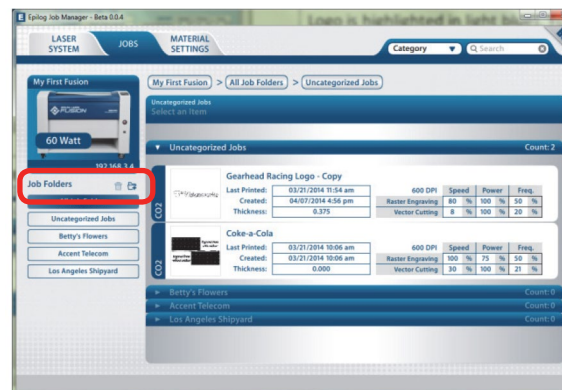
Organizing Your Print Jobs

Click on the Jobs tab. All print jobs will be displayed in the Uncategorized folder. Click on your job to highlight it (The Gearhead Racing Logo is highlighted in light blue). You can now Print, Edit, Preview or Delete this job using the available icons.



Create and Delete Job Folders

Click the **Add Job Folders** icon to add folders. We added folders for our three largest customers. You can add as many folders as you want.

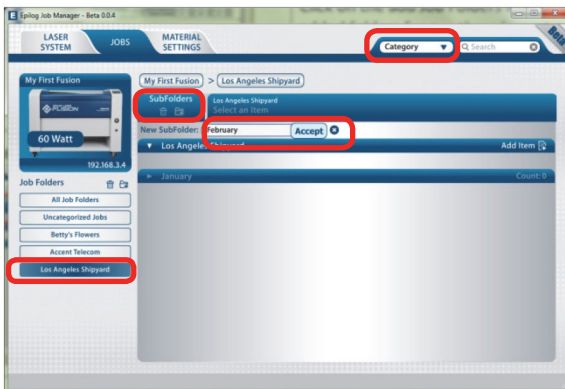


HOW TO USE THE EPILOG JOB MANAGER

Using the Epilog Job Manager

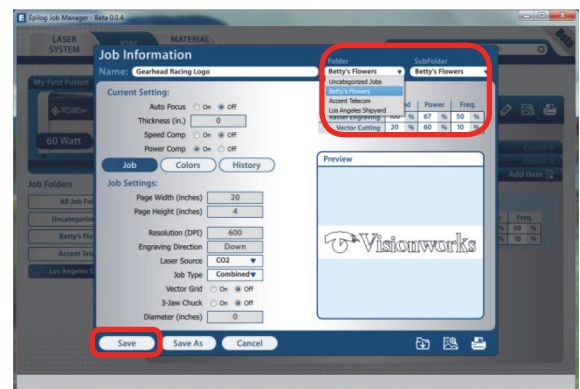
Create SubFolders

First, **highlight the Job folder** in the left panel where you want to add a subfolder. We have highlighted the Los Angeles Shipyard folder. Make sure that **Category** is listed at the top of the page, then click on the **Add Subfolder** icon. We've already added a January subfolder, and after clicking on the check mark we will create the February subfolder.



Move a Job Between Folders

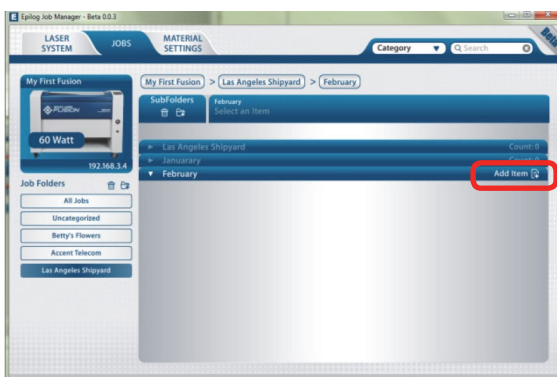
You can also move any job to another folder or subfolder by **double-clicking on the job**. Select the Folder and Subfolder from the drop-down menus where you want to save the job. You can save the job with the same name or you can save as a new job. You can also modify your laser settings and save them with the job. Click **Save** to continue.



Move an Uncategorized File to a Subfolder

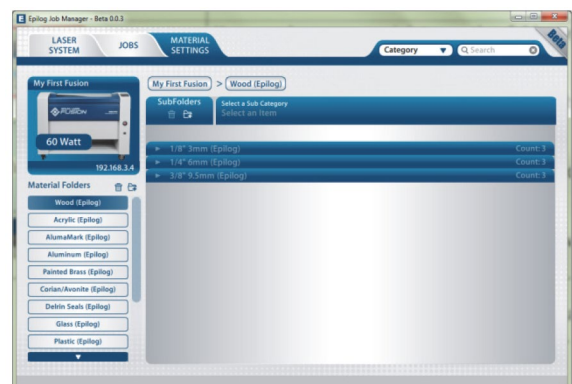
When you highlight a subfolder you will see **Add Item** on the right side of the folder. Click on **Add Item** to move a job from the Uncategorized folder to this subfolder.

Select the job you want to move and then click **OK**. Refresh the subfolder to see the newly moved files by closing and reopening the folder.



Using the Material Setting Configurations

The Material Settings tab stores all of the suggested laser parameters like speed, power, etc. These settings were loaded based on the wattage you specified in the Laser System tab (adding your laser was the very first thing you did to start using the Job Manager).



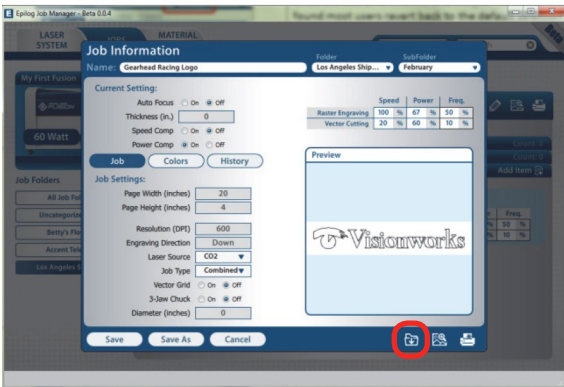
HOW TO USE THE EPILOG JOB MANAGER

Using the Epilog Job Manager

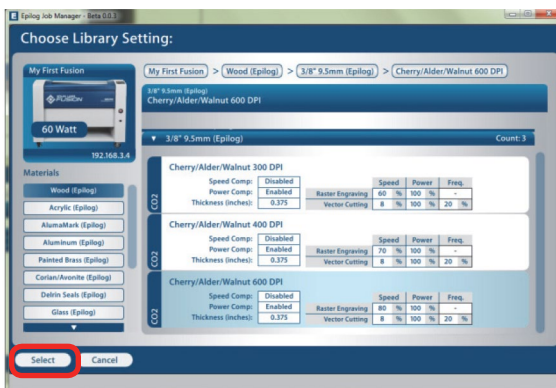
To use the material settings that are automatically loaded in your Job Manager, go to the **Jobs** tab and **double-click on the job** you want to process.



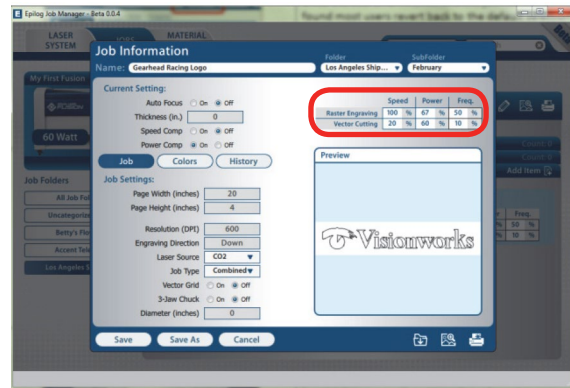
Click on the **Import** icon.



Navigate to the material setting you need. We have highlighted **3/8" Cherry/Alder/Walnut 600 DPI**. Click **Select**.



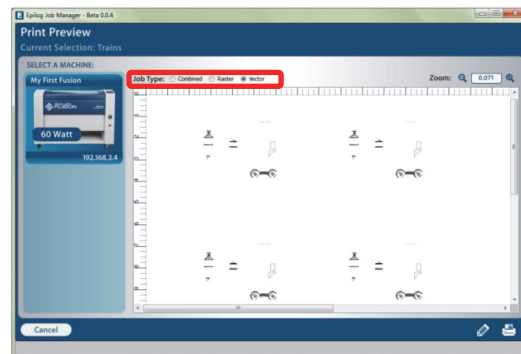
Your new settings have been automatically applied to your job file. You can now save this file, save the file as a different name or print from this window. Double clicking on the artwork will take you to the full preview window which is explained in the next frame.



Previewing Your Job

There are three levels of preview available in the Job Manager: a thumbnail, small and full preview. Clicking on a thumbnail will take you to a small preview, then clicking on the small preview takes you to the full preview where you can zoom to the pixel level.

When you are in the Full Preview mode you can preview just the raster components of your job, or just the vector components. We have selected vector to show only the vector components of this job. The preview mode is very useful in identifying unwanted vector components in a job.



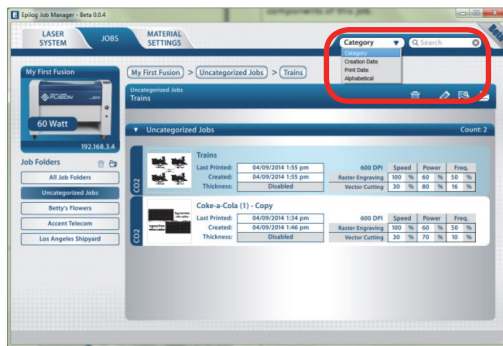
HOW TO USE THE EPILOG JOB MANAGER

Using the Epilog Job Manager

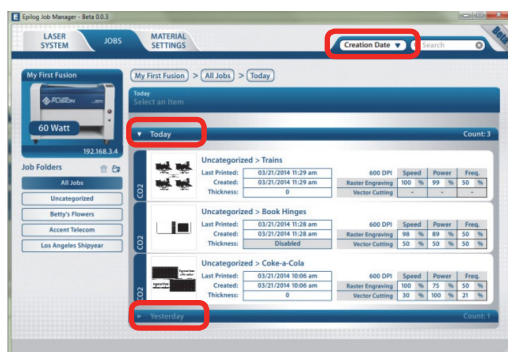
Searching For a Job

The Job Manager has a powerful search function. Type in part of a file name and press enter to find all files related to that name.

You can organize files by category, creation date, print date, or alphabetically to find a specific file.

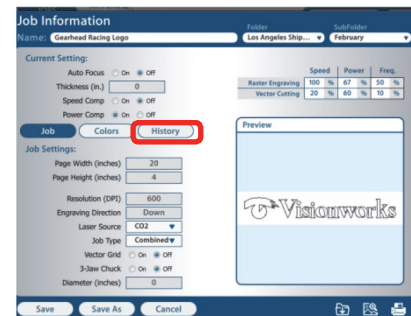


Notice that the jobs are displayed differently if you change the search category to **Creation Date**. Your jobs are now displayed by date, not by category. Once the search is finished and the job has been found most users revert back to the default selection of category.

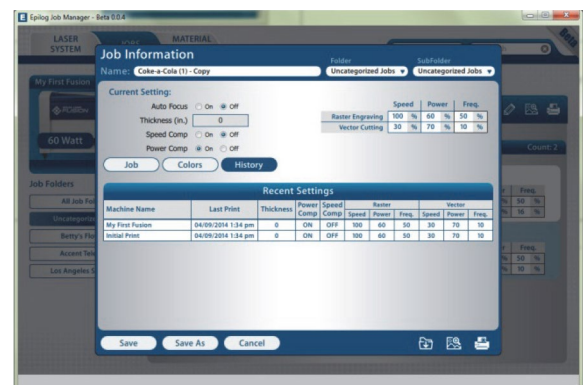


Finding Job History

The Job Manager allows you to see a full print history of a job, including settings you used in each print. The History window shows you the history of this job, what machine it was printed to, when it was first printed (Initial Print), all subsequent prints, and all laser parameters used. To access this, double click on the job, then select History.



You can now modify, print or save from this window using the listed settings or with new setting. The new setting will be saved as the next print job complete with time stamp and date.

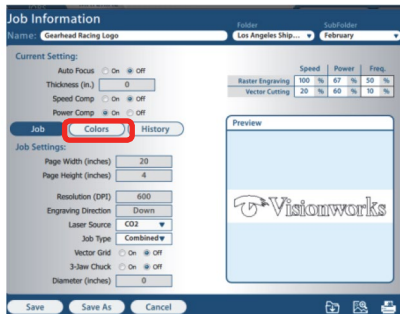


HOW TO USE THE EPILOG JOB MANAGER

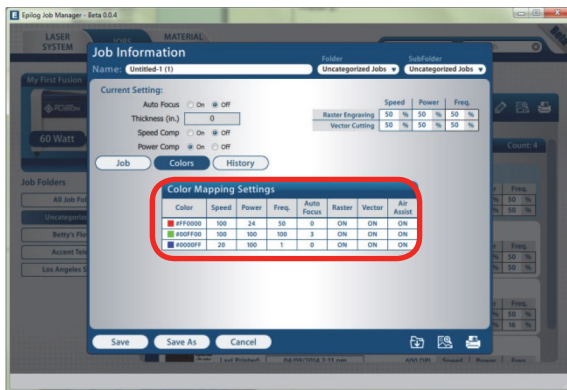
Using the Epilog Job Manager

Color Mapping

To access the Color Mapping settings used in a file, double-click on the file to open the Job Information, then click the **Colors** button.



You can modify the settings, save as a new job, save as the same job, print, preview, etc. from this window.



Now it's Your Turn!

As you can see, the Epilog Job Manager is a powerful software component that will add a great deal of functionality to your laser and how you use it each day. Play with the software and share your feedback by emailing sales@epiloglaser.com.

We will be adding new features to the software often, so sign up for the Fusion Driver Update Notification list on at www.epiloglaser.com/tech-support/fusion-drivers.htm.