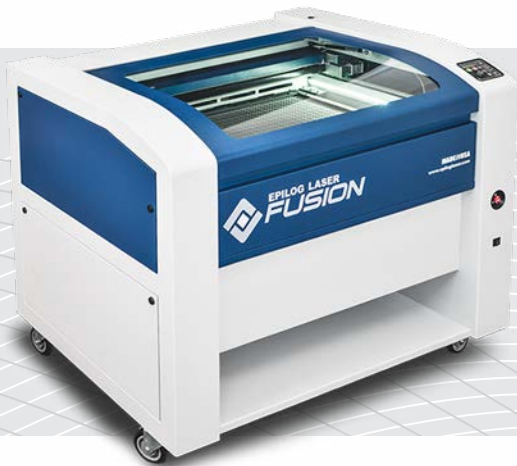




# EPILOG LASER

## Job Manager Instructions



Technical Support: +1 (303) 215-9171

Knowledge Base: [support.epiloglaser.com](http://support.epiloglaser.com)

Driver/Firmware Download: [epiloglaser.com/tech-support/epilog-drivers.htm](http://epiloglaser.com/tech-support/epilog-drivers.htm)

English

# TABLE OF CONTENTS

<b>Windows 7: Ethernet Driver Installation</b>	<b>1</b>
<b>Windows 7: USB Driver Installation</b>	<b>5</b>
<b>Windows 8: Ethernet Driver Installation</b>	<b>9</b>
<b>Windows 8: USB Driver Installation</b>	<b>16</b>
<b>Installing the Epilog Job Manager</b>	<b>22</b>
Trouble Shooting Job Manager Installation . . . . .	24
<b>How To Use the Epilog Job Manager</b>	<b>25</b>
Important Notes . . . . .	25
Using the Epilog Job Manager . . . . .	25
Activate a Laser . . . . .	25
Printing to the Epilog Job Manager . . . . .	26
Organizing Your Print Jobs . . . . .	26
Using the Material Setting Configurations . . . . .	27
Previewing Your Job . . . . .	28
Searching For a Job. . . . .	29
Finding Job History . . . . .	29
Color Mapping . . . . .	30
Changing Program Settings . . . . .	30

# WINDOWS 7: ETHERNET DRIVER INSTALLATION

## Epilog Job Manager Instructions

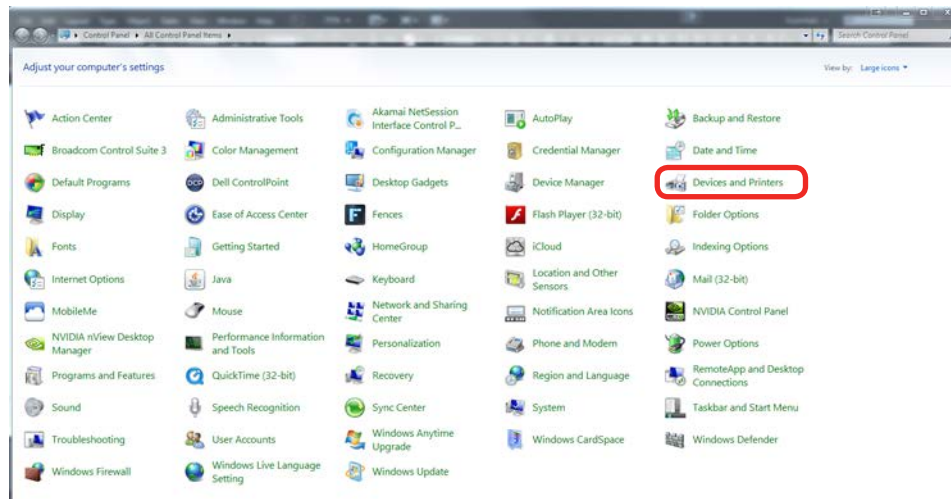
The Epilog Job Manager is a powerful new tool that will quickly become one of your favorite features on the Fusion Laser. From one piece of software, you can access any job you have sent to the laser, view the settings you used on any past job, re-run projects, access your material database, and much more. It's a great addition to the Fusion product features, and we look forward to seeing how our customers use this software!

- **Fusion Driver 1.053 is required** to use the Job Manager. The installation instructions are below.
- **Windows 7/8/8.1 is required** to use the Epilog Job Manager.
- Before you install the new driver you will need to decide if there are any configuration files you want to save. **Configuration files (.dat files ) that were created using the old driver cannot be opened in the new driver.** If you have configuration files with settings that need to be saved you will need to open the files in the old driver, manually record the settings for each file you want to save and then recreate the configuration file in the new driver. Once you have your old configuration files saved you can install the new driver.

## Windows 7: Print Driver Ethernet Installation

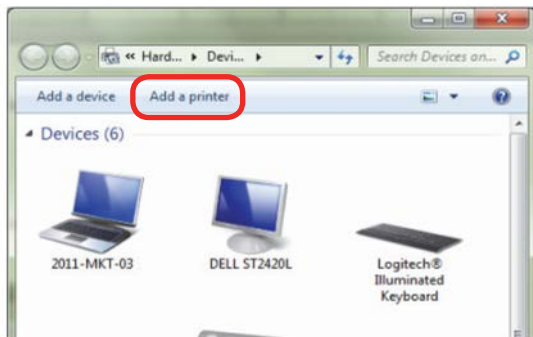
### Installing the Laser Dashboard Print Driver

1. Go to your Control Panel and select **Devices and Printers**.

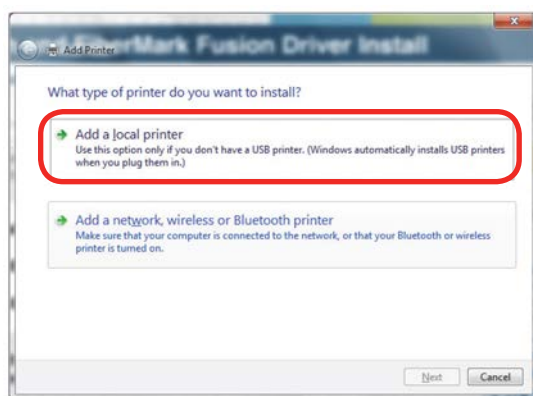


# WINDOWS 7: ETHERNET DRIVER INSTALLATION

2. Click **Add a Printer**.



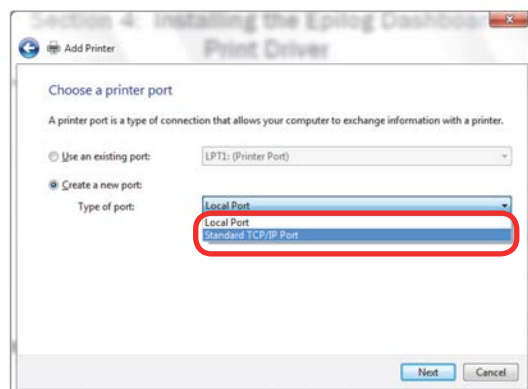
3. Click **Add a local printer**.



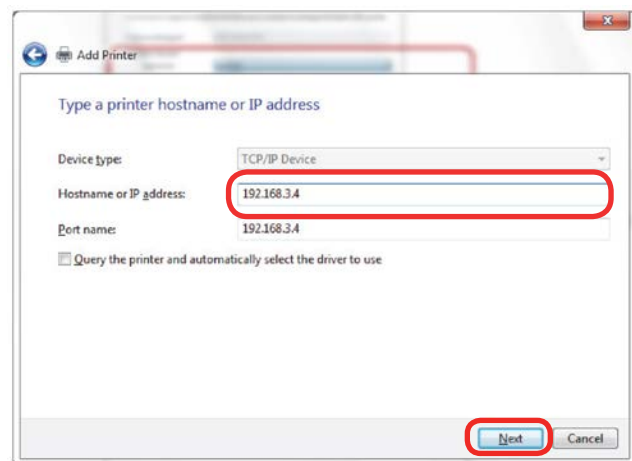
4. Click **Create New Port**, then click on the drop-down menu and select **Standard TCP/IP Port**.



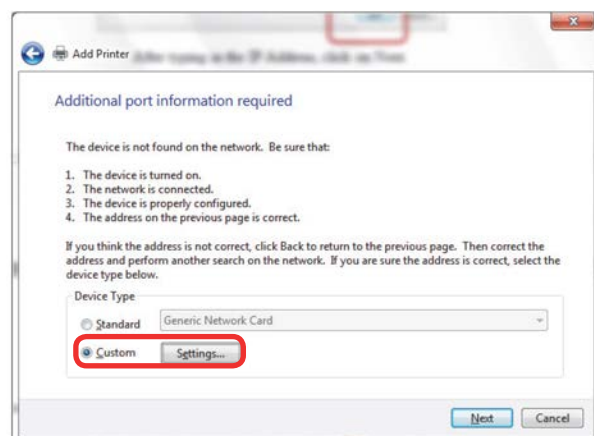
If you are using an existing port, you can choose **Use an existing port** and skip to Step 9.



5. Enter the IP Address you want to use. Most Epilog users will use the IP Address of 192.168.3.4, which is what we use in this document. Whatever number you use, **it must be the same number that you set as the IP Address using the Fusion laser keypad or the ECC**. After typing in the IP Address, click Next. Wait while the computer identifies the port.

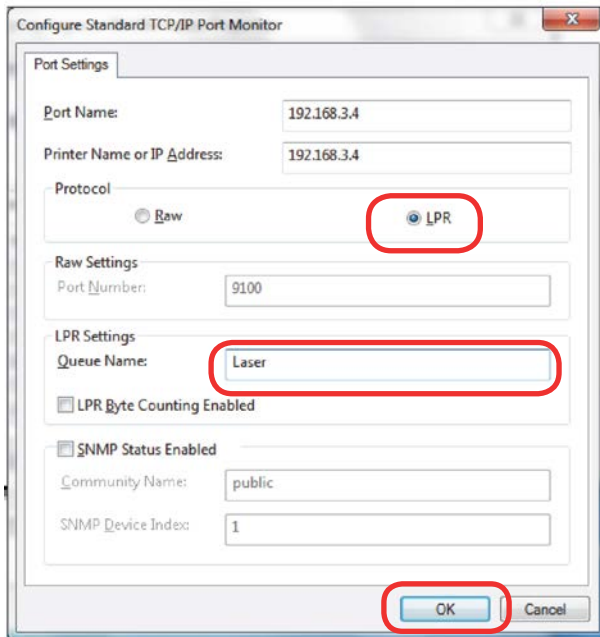


6. Select **Custom** and then **Settings**.

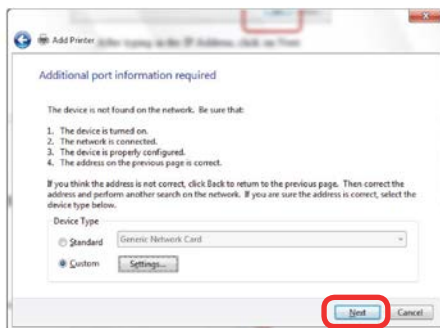


# WINDOWS 7: ETHERNET DRIVER INSTALLATION

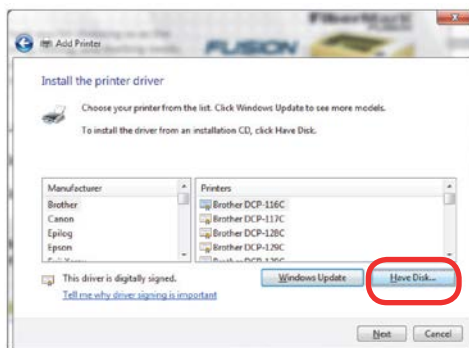
7. **Set Protocol to LPR.** This is a very important step. Your download time will increase significantly if LPR is not selected. Type **Laser** into the Queue Name, then click **OK**.



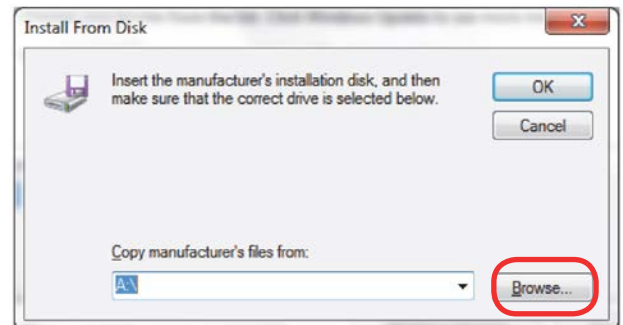
8. Click **Next**.



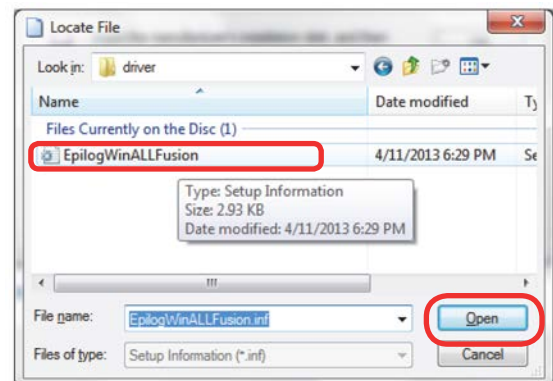
9. Click **Have Disk**.



10. Click **Browse** and go to the folder where you saved the Fusion driver and click **Open**.



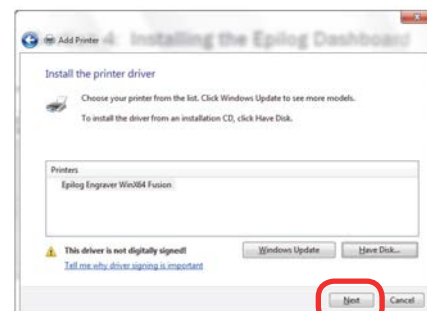
11. Click on the **EpilogWinALLFusion** file and click **Open**.



12. Click **OK**.

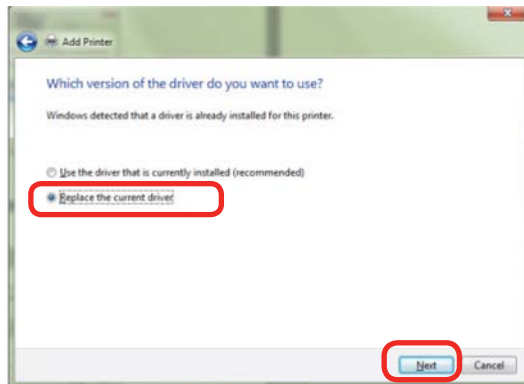


13. Click **Next**.

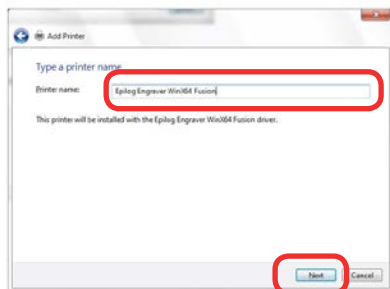


# WINDOWS 7: ETHERNET DRIVER INSTALLATION

14. Click **Replace the current driver** if requested, then click **Next**.



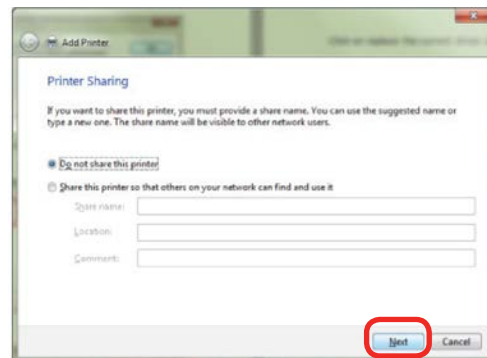
15. You can rename your printer here. We have not changed it for this document, but many users like to associate the driver name with the IP Address they are using, for example Fusion 192.168.3.4. This is especially helpful if there is more than one laser connected to a single computer. Click **Next**.



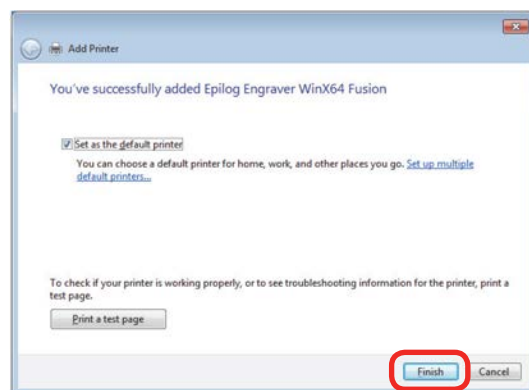
16. Click on **Install this driver software anyway**.



17. Click **Next**.



18. Click Finish. That's it, your driver is installed! Now go to **Page 12: How to Install the Epilog Job Manager**.

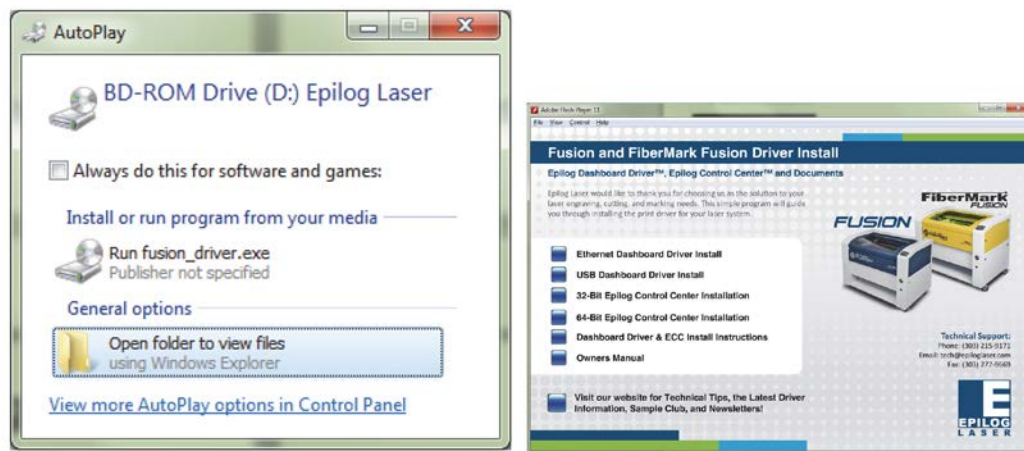


# WINDOWS 7: USB DRIVER INSTALLATION

## Windows 7 USB Connection Installation

Please follow these instructions closely! Using a different process to install the Dashboard driver is likely to fail if you are using Windows 7.

1. Insert the Epilog driver install disc into your computer. One of the following screens will appear. For the USB installation, you will want to close them. We do not want the computer to automatically try to install the driver. Manually installing the driver is a much more robust and successful process.



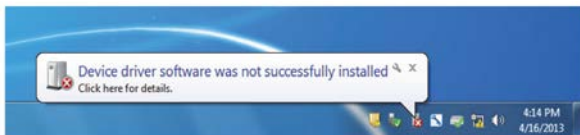
2. **Connect the USB cable** to your computer and your Fusion.
3. **Power on your Fusion laser system.** It will take about a minute for the Fusion to initialize. After it initializes it will start the process of installing the driver. You will see activity on the USB icon in your system tray (lower right corner of your computer screen).





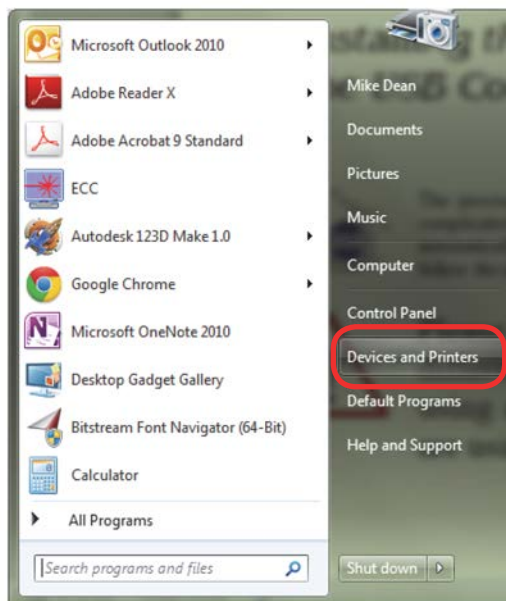
# WINDOWS 7: USB DRIVER INSTALLATION

4. A small window will appear in the lower right corner of your computer screen that indicates installation was successful. This is only partially true.

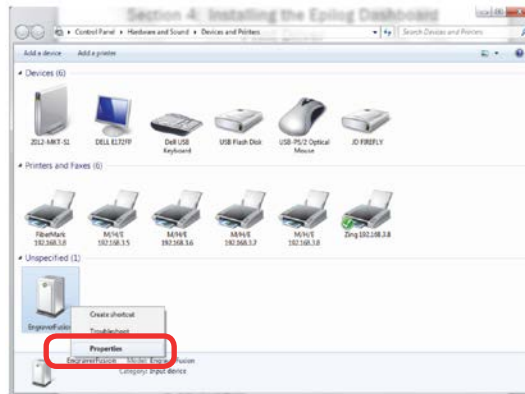


After a short wait you will see another small window that indicates the installation was not successful. This is what we hope to see and will lead us to the next step in the process. If your computer is connected to the Internet, it will take a few minutes for your computer to display these windows. Please be patient during this process and let the computer finish trying to install the drivers. Interrupting the computer at this point will require you to restart the process.

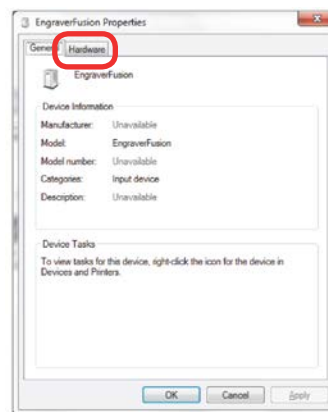
5. After the failure notification, go to the Windows start button (lower left corner of your computer screen). Click on **Devices and Printers**.



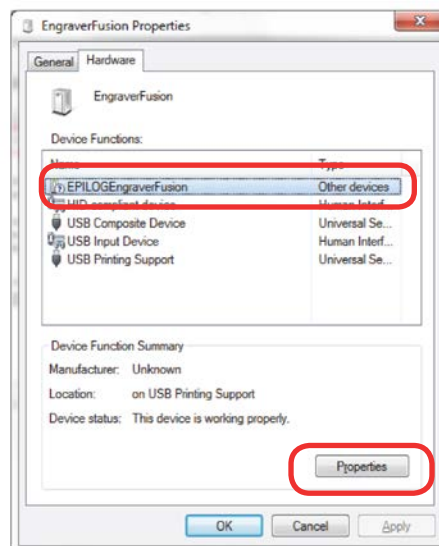
6. Right click on the **Fusion icon**. Then click **Properties**.



7. Select the **Hardware** tab.



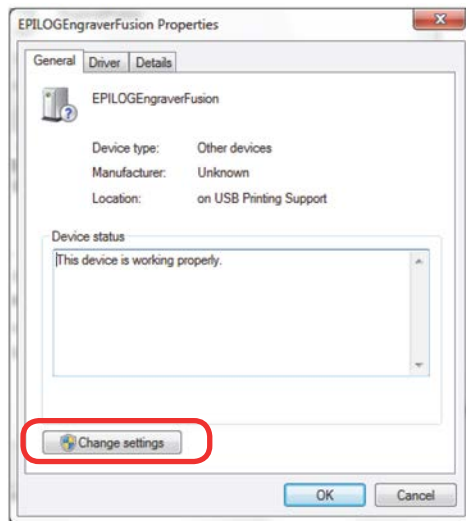
8. Select the device **EpilogEngraverFusion**. Then click **Properties**.



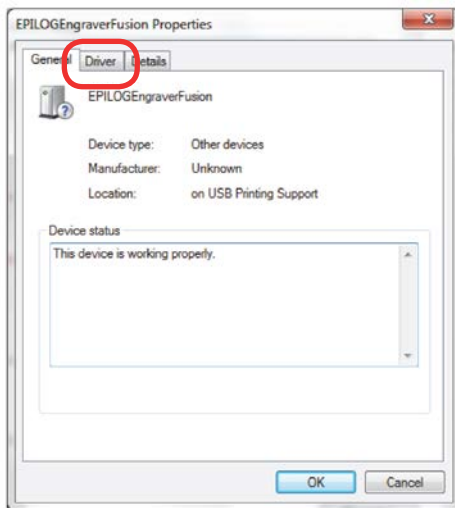


# WINDOWS 7: USB DRIVER INSTALLATION

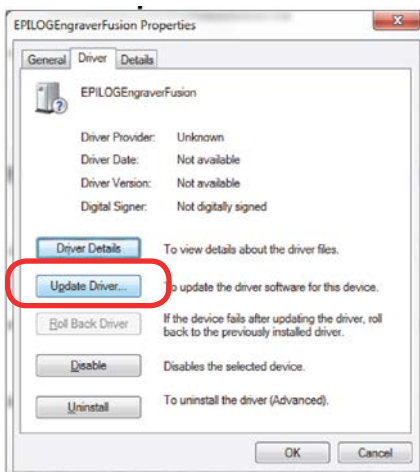
9. Click **Change Settings**.



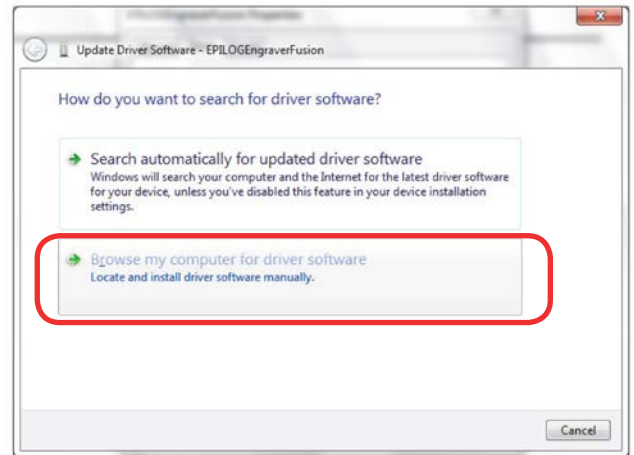
10. Click the **Driver** tab.



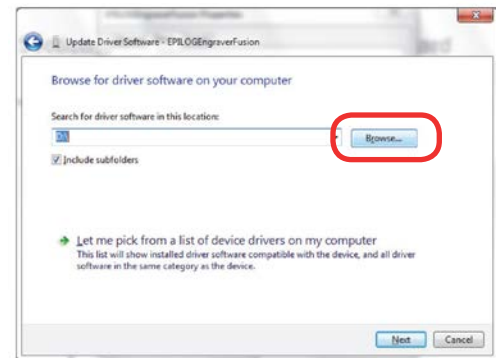
11. Click **Update Driver**.



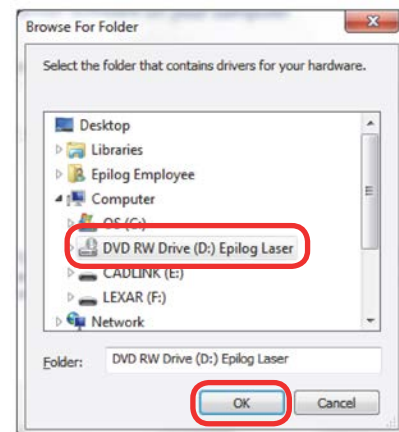
12. Click **Browse my Computer** for driver software.



13. Use the **Browse** button to direct your computer to your disc drive that contains the Epilog driver disc that you inserted earlier in this process.

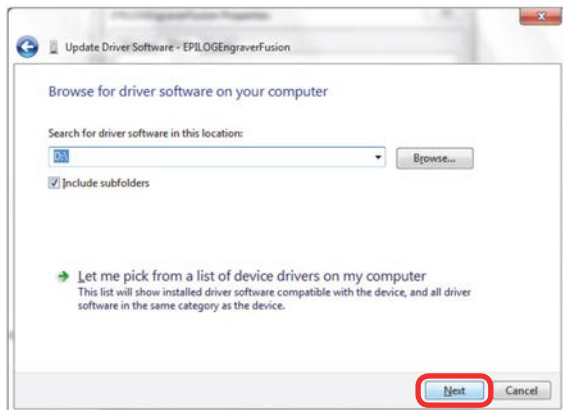


14. For this document we show the DVD RW drive as the drive where the disc is located.



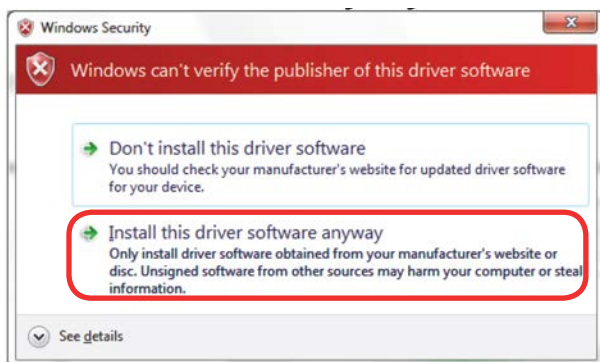
# WINDOWS 7: USB DRIVER INSTALLATION

15. Once you have the proper disc drive showing click on the **Next** button.

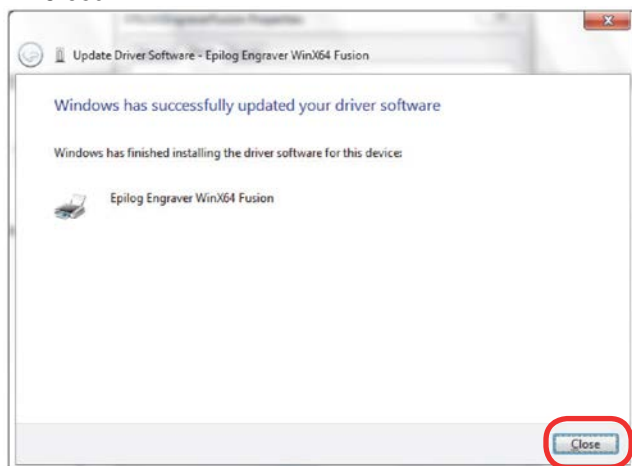


16. The progress window will appear.

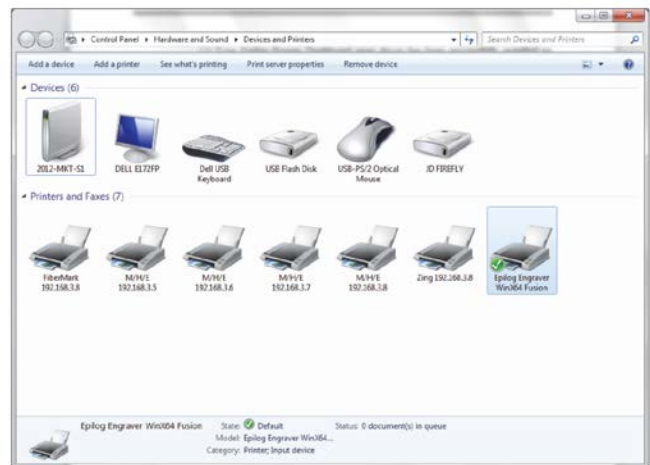
17. You will then be asked if you want to install this driver: **Click Install this Driver Anyway.**



18. Your Epilog Fusion Dashboard print driver has been successfully installed on the USB port. Click **Close**.



19. Click on **Close** in the next window and then **Close** again. You will then see your Fusion driver in the Devices and Printers page. Click on the red **X** in the upper right corner of this page. That's it! You are ready to print to your Fusion.



# WINDOWS 8: ETHERNET DRIVER INSTALLATION

## Windows 8 and 8.1: Print Driver Ethernet Installation

Please follow these instructions closely! Using a different process to install the Dashboard driver is likely to fail if you are using Windows 8. The process includes the following steps:

1. Turning off the Driver Signature Enforcement
2. Laser Dashboard Driver Installation

### Step 1: Turning off the Driver Signature Enforcement

Before you can install the 64-bit Epilog Dashboard Driver in Windows 8 or 8.1, the Driver Signature Enforcement feature must be disabled, then you will be able to proceed using standard Windows driver installation protocol. Once the Dashboard Driver is installed for the first time you can install new versions without having to disable the Driver Signature Enforcement again.

1. Open the Charms Bar and select **Settings**. The Charms Bar is displayed by moving your mouse cursor into the lower right corner of your display.



2. Select **Change PC Settings**.

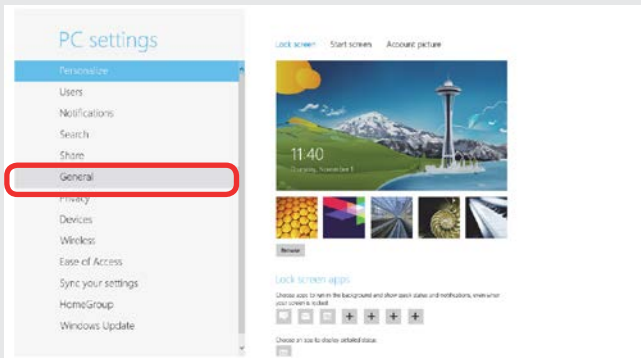


# WINDOWS 8: ETHERNET DRIVER INSTALLATION

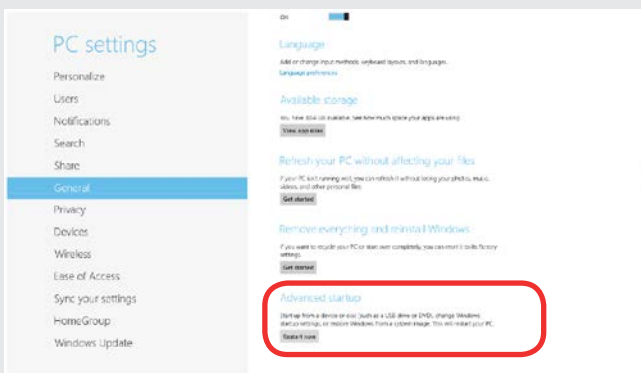
Windows 8 and 8.1 have different paths to disable the Driver Signature. Choose your operating system:

## Windows 8

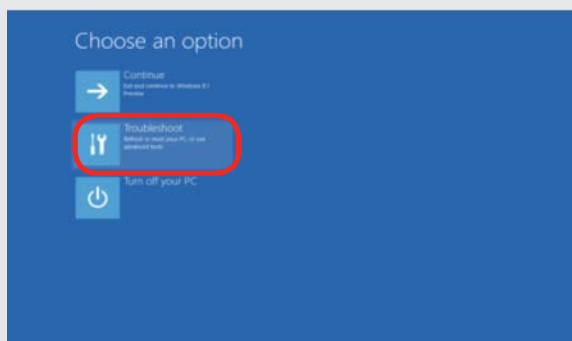
Select **General**.



Scroll to the bottom of the General page. Under “Advanced Start-Up” select **Restart Now**.

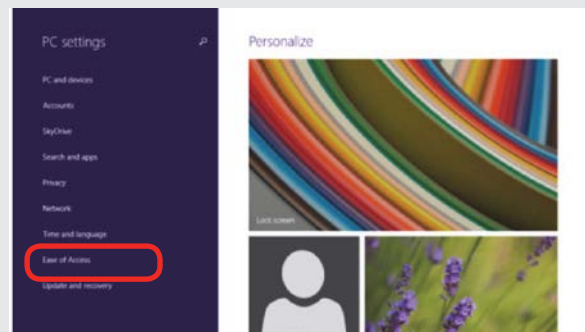


Select **Troubleshoot**.

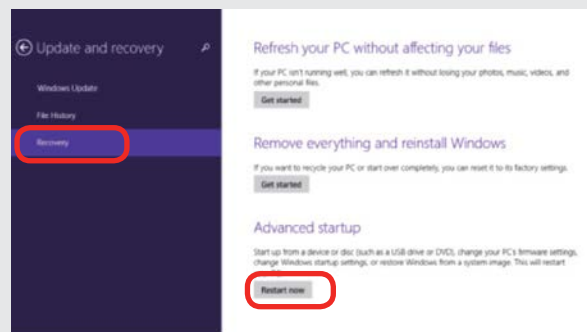


## Windows 8.1

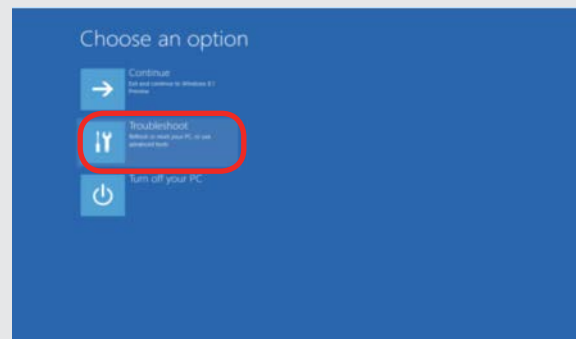
Select **Update and Recovery**.



Click on the Recovery option, which will bring up more options. In the **Advanced Startup** section click **Restart Now**.

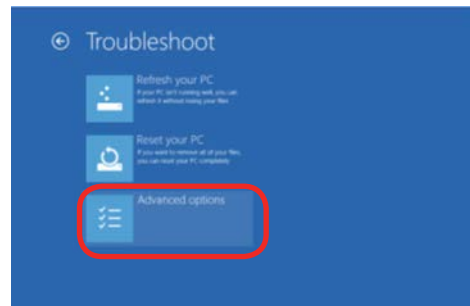


Select **Troubleshoot**.

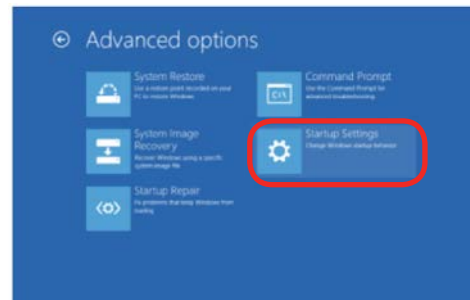


## WINDOWS 8: ETHERNET DRIVER INSTALLATION

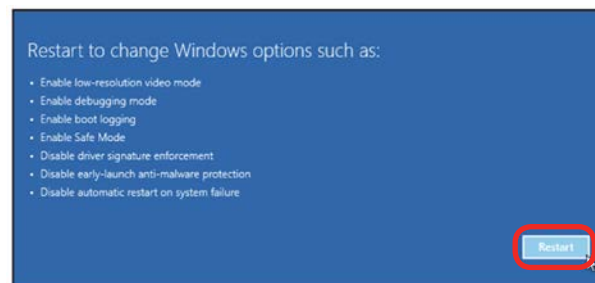
3. The next steps are identical in Windows 8 and 8.1. Select **Advanced Options**.



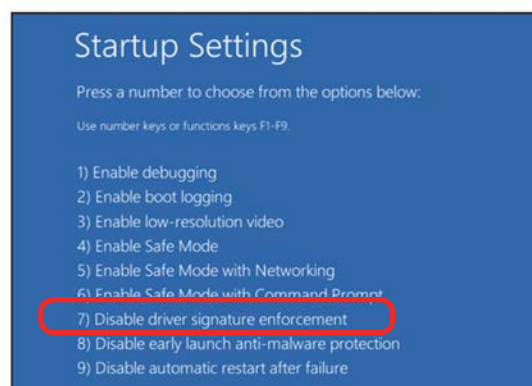
4. Select **Startup Settings**.



5. Select the **Restart** button.



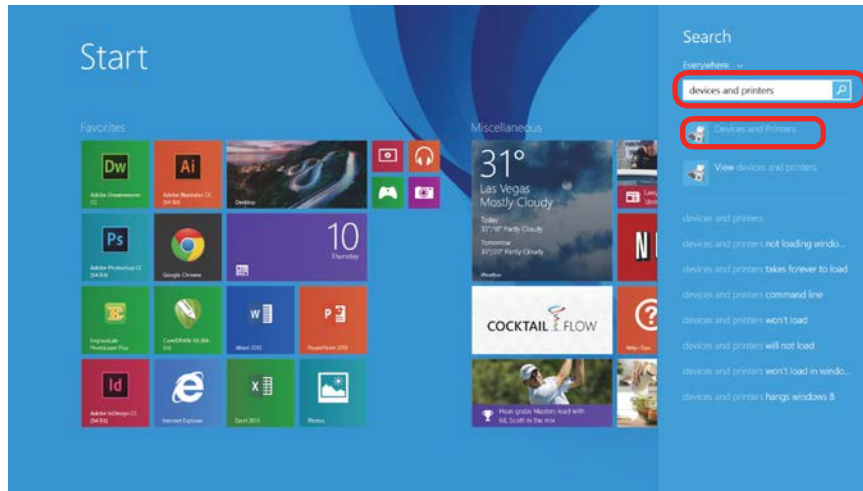
6. On the next screen, press either the **F7** key or the **number 7** key from your computer keyboard. This selection disables the Driver Signature Enforcement which will then allow you to install a printer driver. After pressing either key your computer will reboot. Now, Login as normal to install the driver.



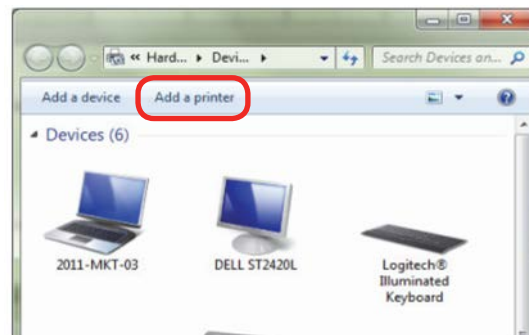
# WINDOWS 8: ETHERNET DRIVER INSTALLATION

## Step 2: Installing the Dashboard Driver

1. On your Start Screen start typing “devices and printers” (the text box will appear when you start typing). Select **Devices and Printers** from the list of items that appears.



2. Click **Add a printer**.



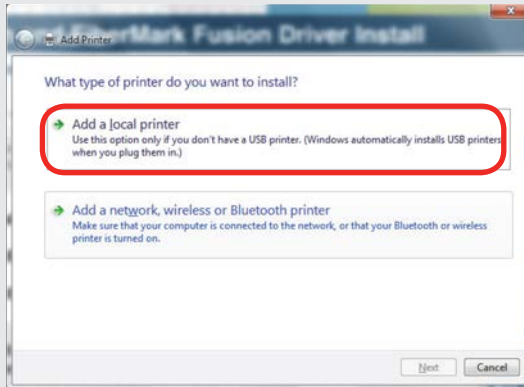


# WINDOWS 8: ETHERNET DRIVER INSTALLATION

Windows 8 and 8.1 have different paths. Choose your operating system:

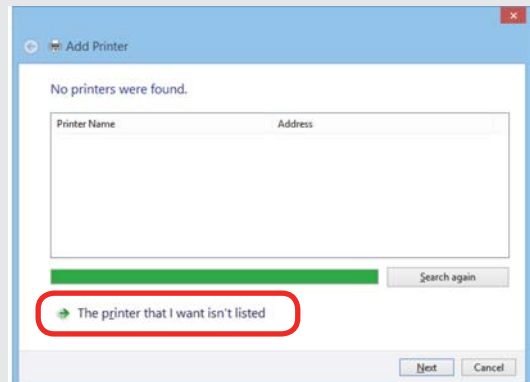
## Windows 8

Select **Add a Local Printer**.

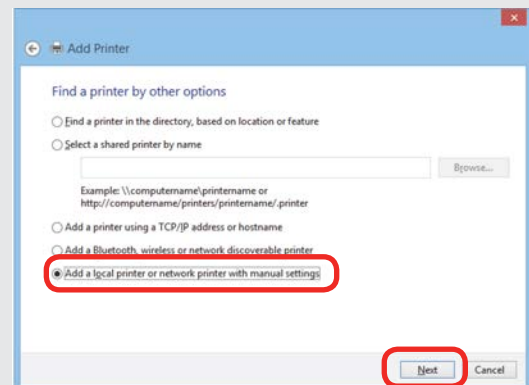


## Windows 8.1

Select **The printer that I want isn't listed**.



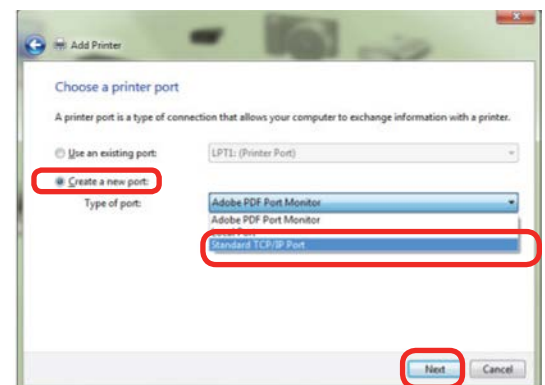
Click **Add a local printer or network printer with manual settings**. Click **Next**.



- The next steps are identical in Windows 8 and 8.1 Click on **Create a New Port**, then click on the drop-down menu. Select **Standard TCP/IP Port**. Click **Next**.

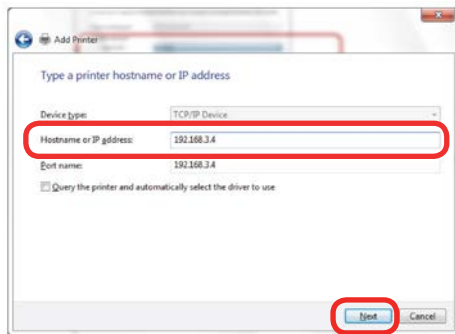


If you are using an existing port, you can choose **Use an existing port** and skip to Step 7.

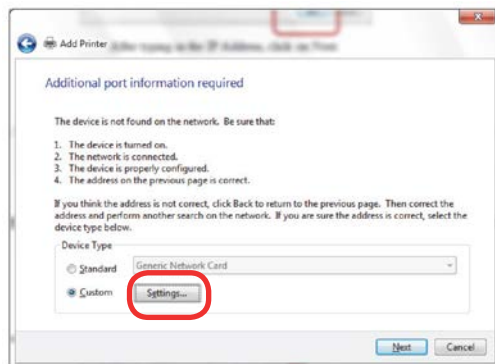


# WINDOWS 8: ETHERNET DRIVER INSTALLATION

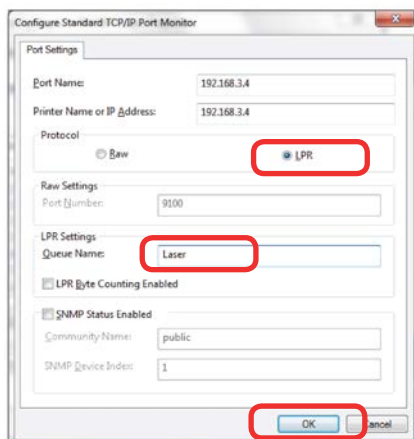
4. Enter the IP Address you want to use. Most Epilog users will use the IP Address of **192.168.3.4**, which is what we use in this document. Whatever number you use, **it must be the same number** that you set as the IP Address using the Fusion laser keypad or the ECC. After typing in the IP Address, click on **Next**. Wait while the computer identifies the port.



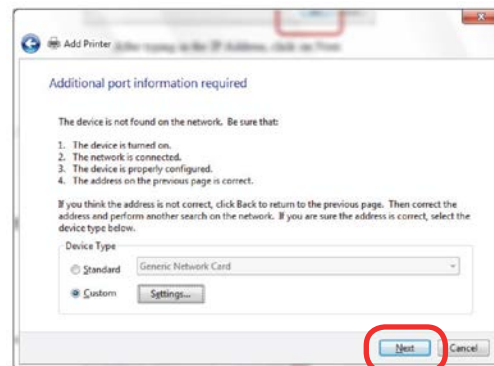
5. Select **Custom**, then **Settings**.



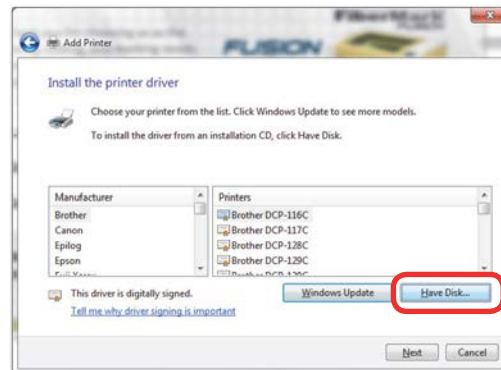
6. **Set Protocol to LPR**. This is a very important step. Your download time will be greatly increased if LPR is not selected. Type **Laser** into the Queue Name. Click **OK**.



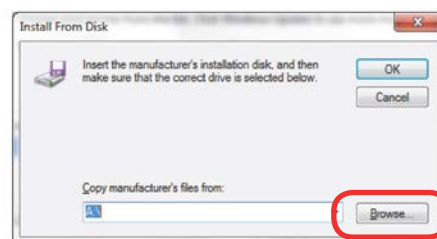
7. Click **Next**.



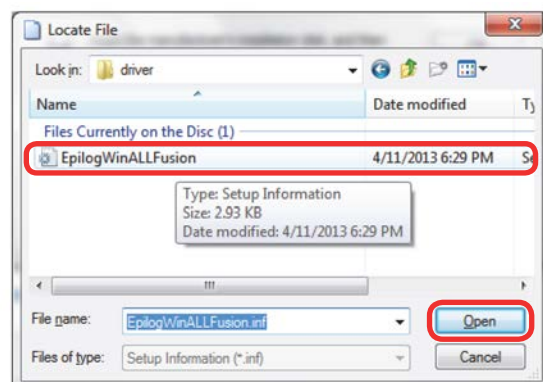
8. Click **Have Disk**.



9. Click **Browse**, browse to the folder where you saved the download.



10. Click on the **EpilogWinALLFusion** file and then click **Open**.

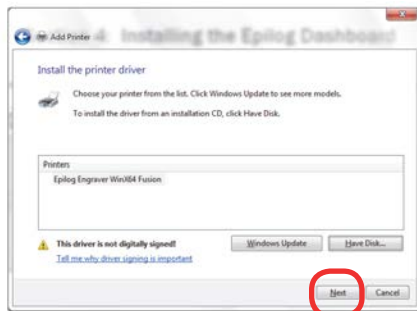


# WINDOWS 8: ETHERNET DRIVER INSTALLATION

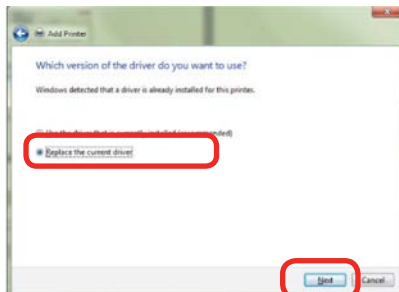
11. Click **OK**.



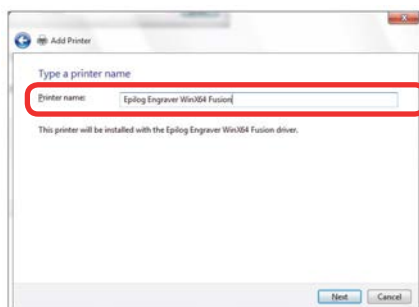
12. Click **Next**.



13. Click **Replace the current driver** if requested and click **Next**.



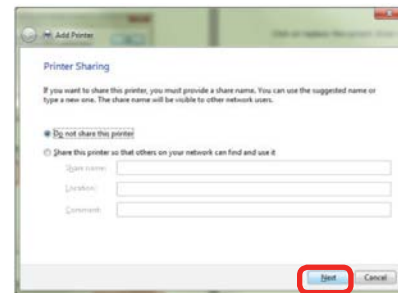
14. You can rename your printer here. We have not changed it for this document, but many users like to associate the driver name with the IP Address they are using, especially if there is more than one laser connected to a single computer. For example, we might rename the driver **Fusion 192.168.3.4**. Click **Next**.



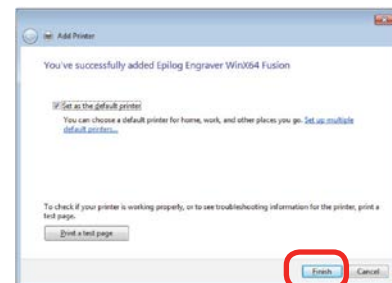
15. Click **Install this driver anyway**.



16. Click **Next**.



17. Click **Finish** and your driver is installed. Now continue to the next page to install the Epilog Job Manager.



# WINDOWS 8: USB DRIVER INSTALLATION

## Windows 8 and 8.1: USB Installation

Windows 8 will not automatically walk you through the installation process so it is important to follow the instructions below.

Please follow these instructions closely! Using a different process to install the Dashboard driver is likely to fail if you are using Windows 8. The process includes the following steps:

1. Turning off the Driver Signature Enforcement
2. Laser Dashboard Driver Installation

### Step 1: Turning off the Driver Signature Enforcement

Before you can install the 64-bit Epilog Dashboard Driver in Windows 8 the Driver Signature Enforcement feature must be disabled, then, you will be able to proceed using standard Windows driver installation protocol. Once the Dashboard Driver is installed for the first time you can install new versions without having to disable the Driver Signature Enforcement again.

1. Open the **Charms Bar** and select **Settings**. The Charms Bar is displayed by moving your mouse cursor into the lower right corner of your display.



2. Select **Change PC Settings**.

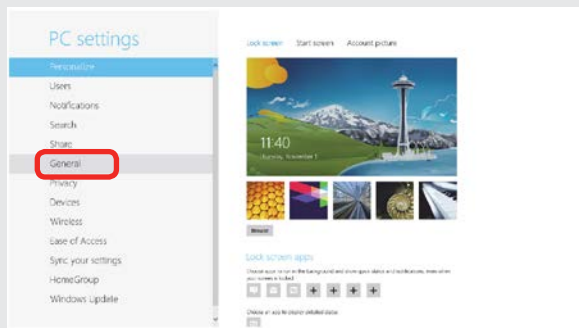


# WINDOWS 8: USB DRIVER INSTALLATION

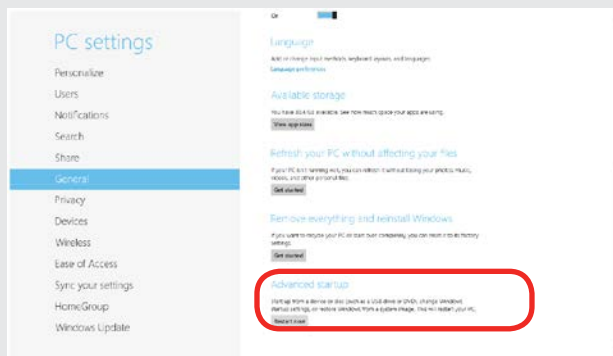
Windows 8 and 8.1 have different paths to disable the Driver Signature. Choose your operating system:

## Windows 8

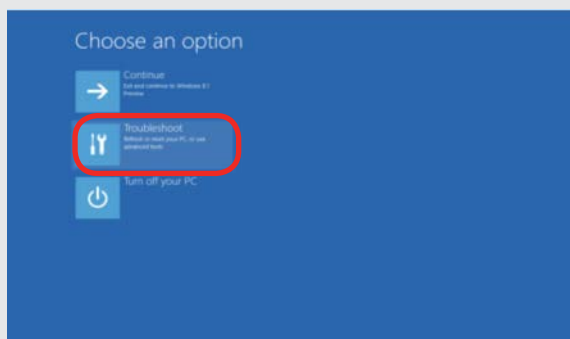
Select **General**.



Scroll to the bottom of the **General** page. Under “Advanced Start-Up” select **Restart Now**.

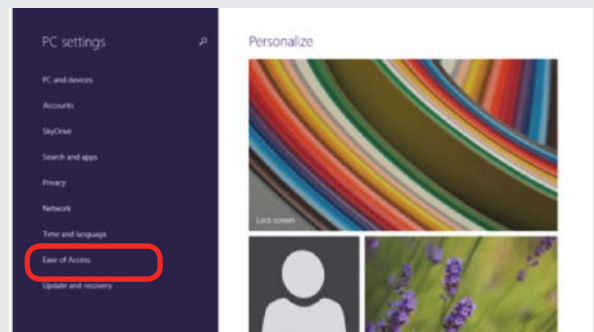


Select **Troubleshoot**.

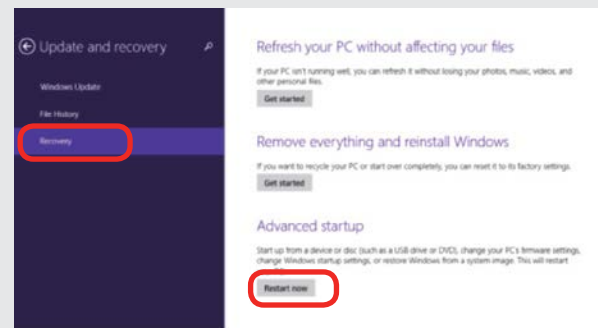


## Windows 8.1

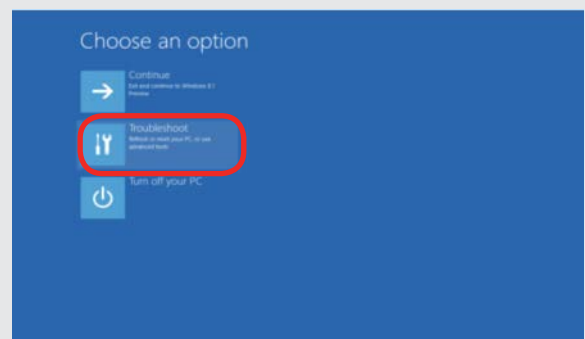
Select **Update and Recovery**.



Click on **Recovery**, which will bring up more options. In the **Advanced Startup** section click **Restart Now**.

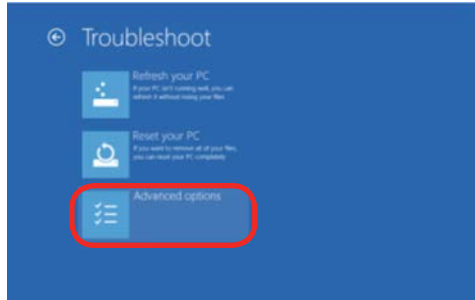


Select **Troubleshoot**.

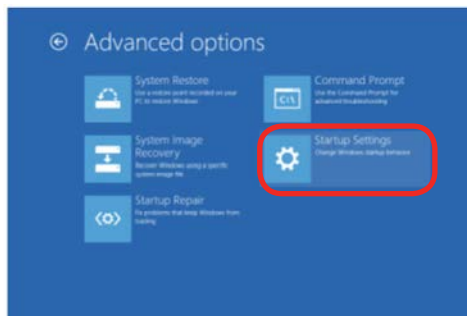


# WINDOWS 8: USB DRIVER INSTALLATION

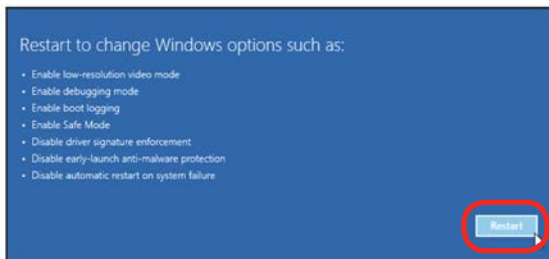
- The remaining steps are identical in Windows 8 and 8.1. Select **Advanced Options**.



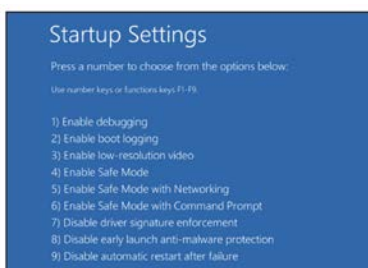
- Select **Startup Settings**.



- Select the **Restart** button.



- On the next screen press the **number 7 key** from your computer Control Panel. This selection disables the Driver Signature Enforcement which will then allow you to install a printer driver. After the compute reboots, **login** as normal to install the driver.



## Step 2: USB Laser Dashboard Installation

Please follow these instructions closely! Using a different process to install the Dashboard driver is likely to fail if you are using Windows 8.

- Power on your computer, **then** connect the USB cable to your computer and your Fusion.
- Power on your Fusion laser system. It will take about a minute for the Fusion to initialize.
- Once your Fusion has initialized, there will not be any real indication on your Windows 8 computer that it is ready to install the Epilog driver, but it is ready.
- Open the Charms Bar and click on the **Search** charm. To access the Charms Bar move your mouse into the lower right corner of your display.



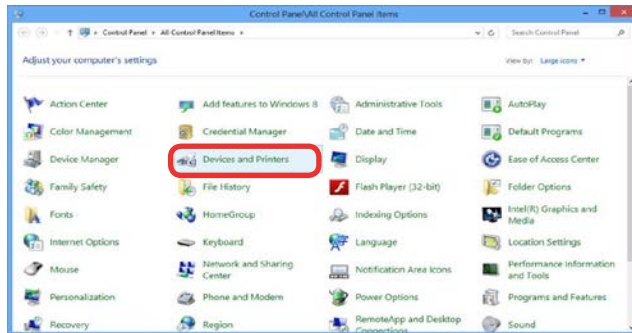
- Type the word **Control** into the search bar. Click on the Control Panel box under Apps in the upper left of this window.



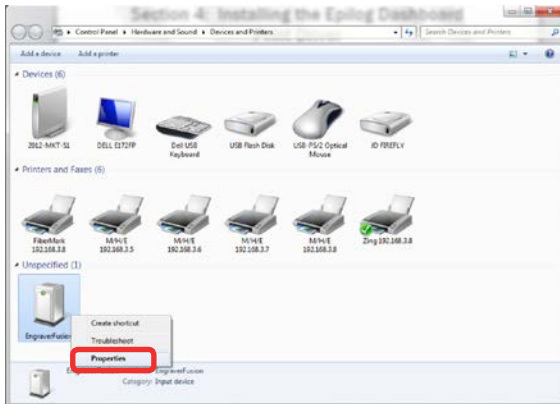


# WINDOWS 8: USB DRIVER INSTALLATION

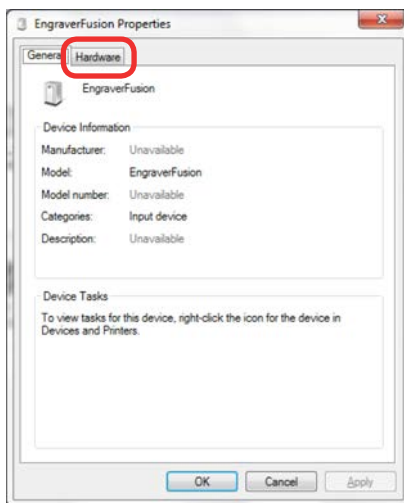
6. Click **Devices and Printers**.



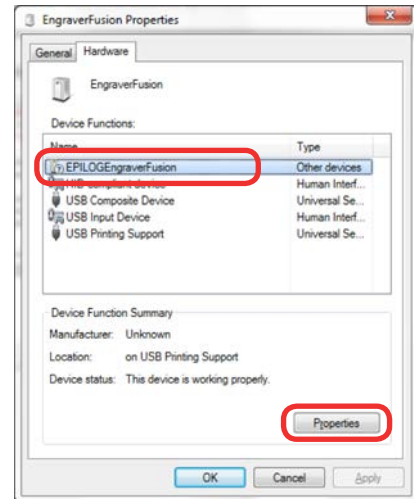
7. In the Unspecified section of Devices and Printers, **right click on the Fusion icon**, then click **Properties**.



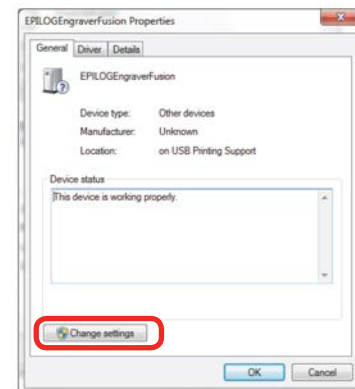
8. Select the **Hardware** tab.



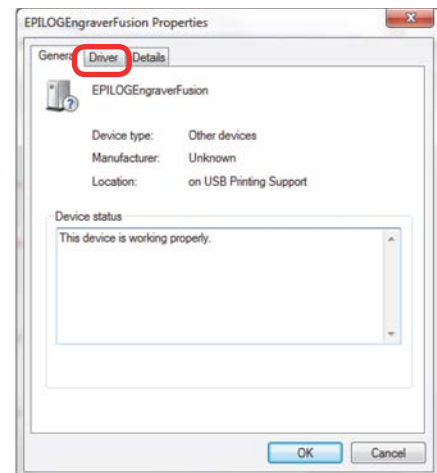
9. Select the device **EpilogEngraverFusion**. Then click **Properties**.



10. Click **Change Settings**.

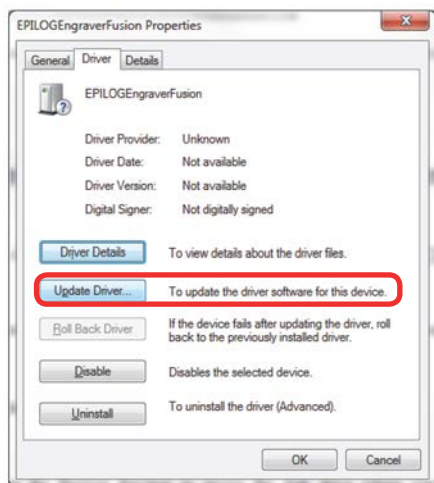


11. Click the **Driver** tab.

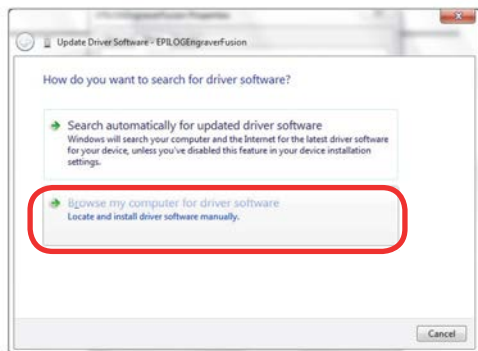


# WINDOWS 8: USB DRIVER INSTALLATION

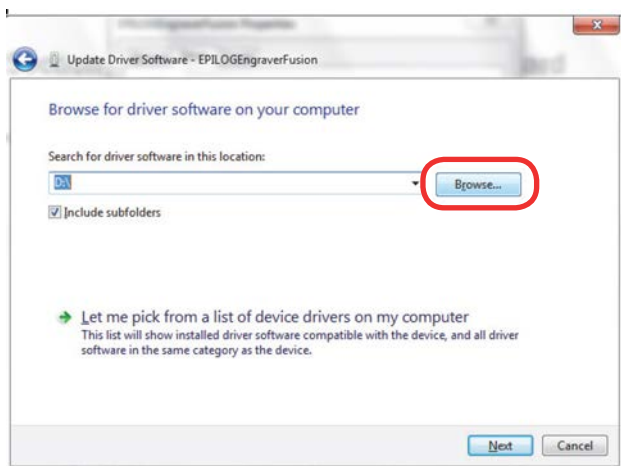
12. Click **Update Driver**.



13. Click **Browse my Computer for driver software**.



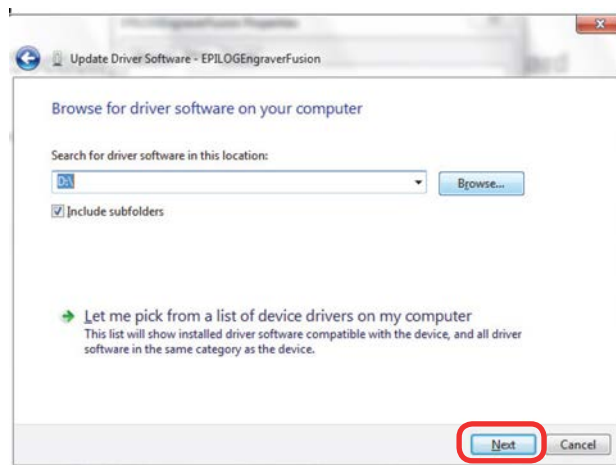
14. Use the **Browse** button to direct your computer to your disc drive that contains the Epilog driver disc that you inserted earlier in this process.



15. Find the disc drive with the Epilog install disc and click **OK**.



16. Once you have the proper disc drive showing click the **Next** button.

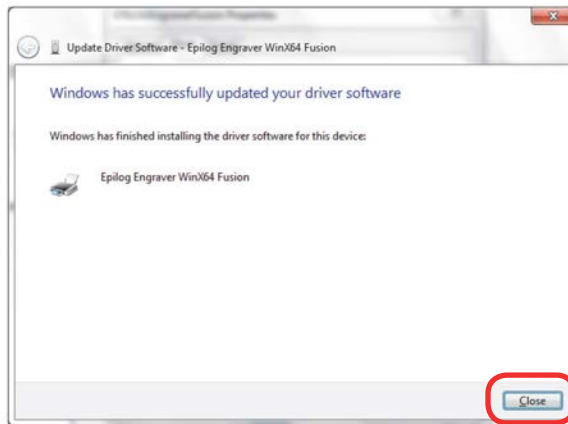


17. Wait while until the progress window disappears, then you will be asked if you want to install this driver. Click **Install this Driver Anyway**.

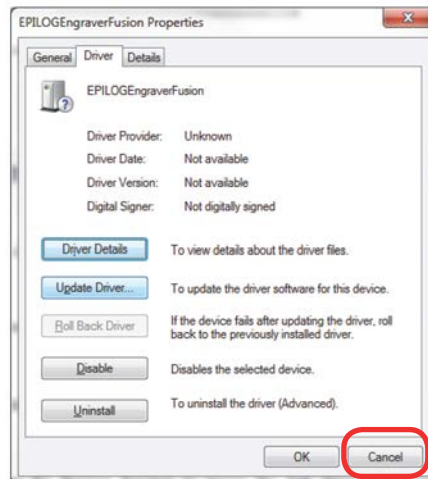


# WINDOWS 8: USB DRIVER INSTALLATION

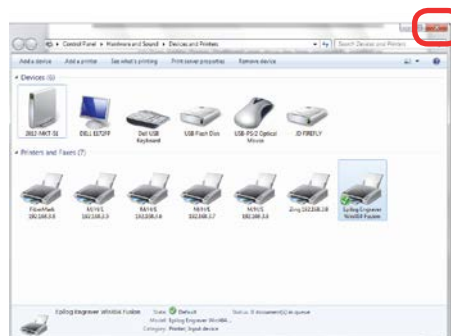
18. Your Epilog Fusion Dashboard has been successfully installed on the USB port. Click **Close**.



19. In the next window, click **Cancel**.



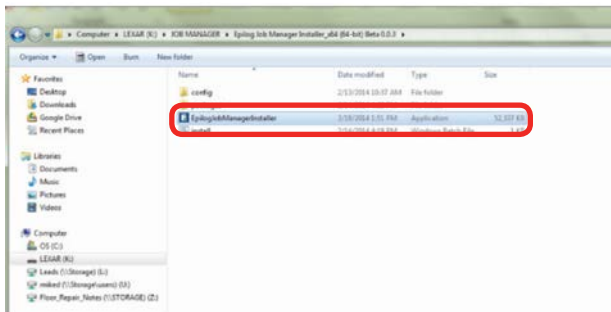
20. You will see your Fusion driver in the Devices and Printers page. Click on the **red X** in the upper right corner of this window and you are ready to print!



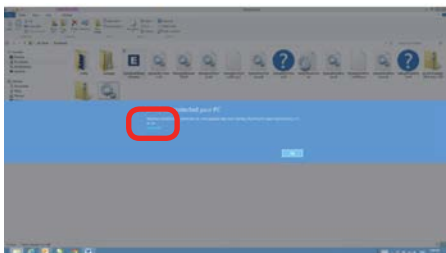
# INSTALLING THE EPILOG JOB MANAGER

## How to Install the Epilog Job Manager

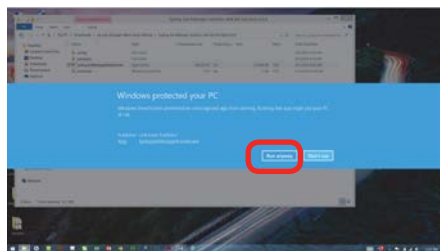
1. After downloading the Job Manager from [epiloglaser.com/tech-support/drivers.htm](http://epiloglaser.com/tech-support/drivers.htm), access the Epilogjobmanagerinstaller.exe. **Double click** to start.



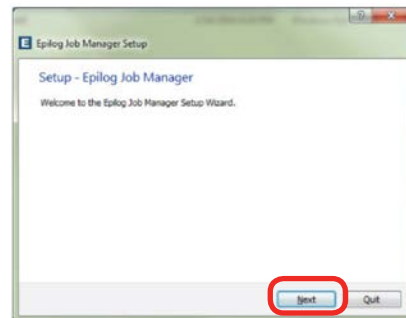
2. In Windows 8 or 8.1 you **may** see this message. Click **More Info**.



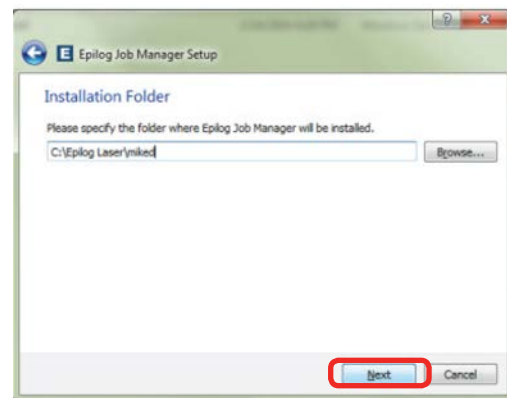
3. Click **Run Anyway**.



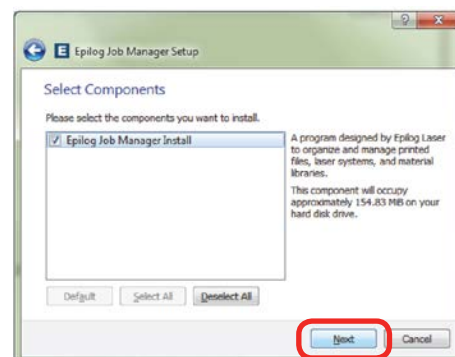
4. Click **Next**.



5. Click **Next**



6. Click **Next**.

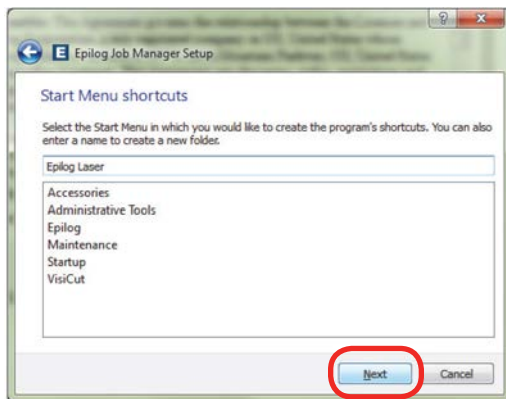


7. **Accept the license**, then click **Next**.

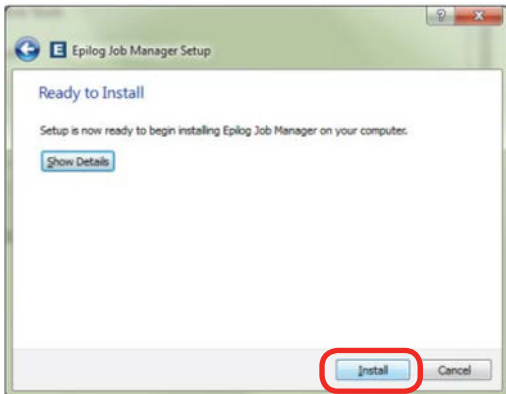


# INSTALLING THE EPILOG JOB MANAGER

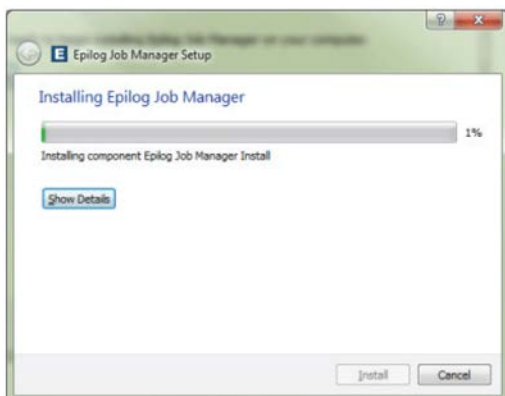
8. Click **Next**.



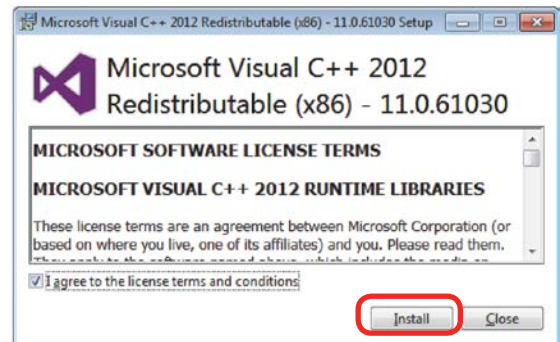
9. Click **Install**.



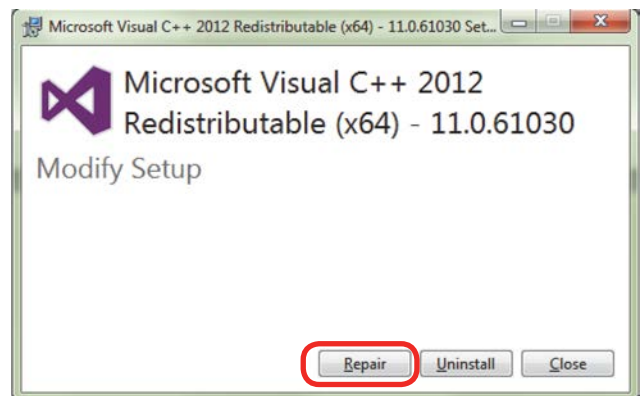
10. The installation will take a few moments.



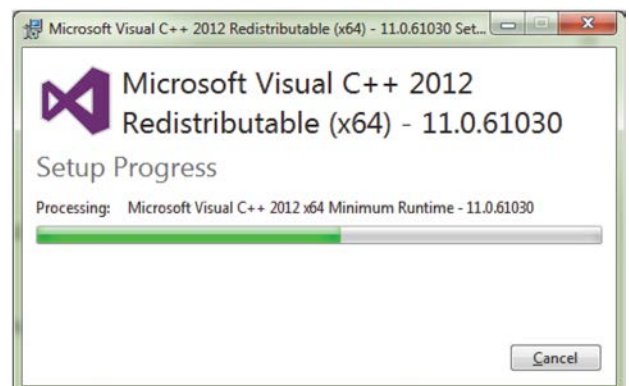
11. You **may** be asked to install the Microsoft Visual C++ Program. This program is required to operate the Job Manager. **Agree to the license** and click **Install**.



12. There is a possibility that this program is already installed on your computer. If it is, you will be asked to Repair, Uninstall, or Close. Choose **Repair**.



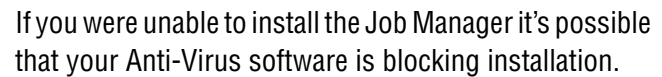
13. You will see this progress window. Please be patient, as it takes a minute or so before the progress bar appears.





## Trouble Shooting Job Manager Installation

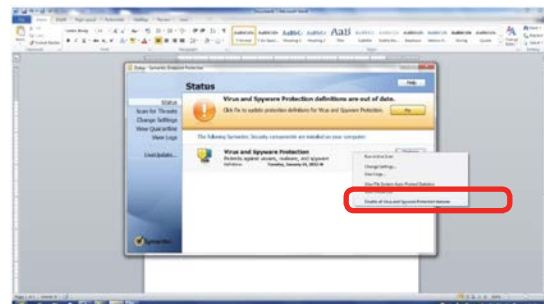
## Trouble Shooting Job Manager Installation



15. Click **Finish** and the Job Manager is installed.



16. A Job Manager icon will be automatically added to your Desktop. You are now ready to use the Job Manager.





# HOW TO USE THE EPILOG JOB MANAGER

## Important Notes

We are proud to introduce the first official release of the Epilog Job Manager for the Fusion Laser Series. The driver and Job Manager versions are:

1. **Driver: 1.053**
2. **Job Manager: 1.1.0**

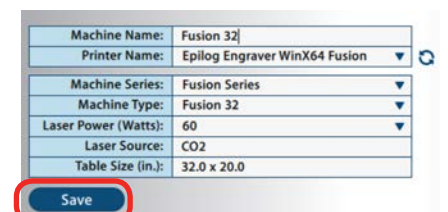
## Important Notes

- The Job Manager requires Fusion Driver 1.053 or later. Early versions of the Fusion driver will not communicate with the Job Manager.
- Before you install the new driver you will need to decide if there are any configuration files you want to save. **Configuration files (.dat files ) that were created using the old driver cannot be opened in the new driver.** If you have configuration files with settings that need to be saved you will need to open the files in the old driver, manually record the settings for each file you want to save and then recreate the configuration file in the new driver. Once you have your old configuration files saved you can install the new driver.
- We suggest a **minimum of 1 GB of free RAM** space when managing very large raster and vector jobs.

## Using the Epilog Job Manager

### Activate a Laser

1. The first time you open the Job Manager you'll see each of the Fusion models. You will need to activate your laser system to get started. **Click to highlight your Fusion model, or choose the FIBERMARK tab to select the FiberMark Fusion.** You can activate multiple machines if you have more than one Fusion.
2. To activate your machine, give your machine a name, choose your Fusion from the drop-down list of USB and Ethernet printers, laser wattage, etc. It's important that you identify the proper laser power of your system. The wattage specified automatically loads the proper Material Setting files. Click **Save**. Your machine configuration has been saved and the Material Settings for your laser model and power have been pre-installed in the Material Settings tab.



# HOW TO USE THE EPILOG JOB MANAGER

Using the Epilog Job Manager

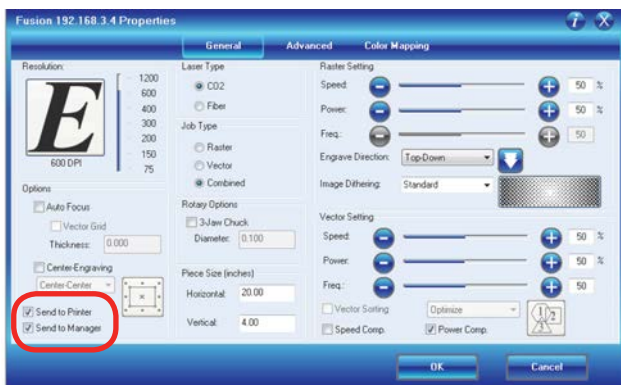
3. Your new laser has been activated in the Job Manager and appears in the left panel. Use the **Add or Delete** buttons to add additional machines or to remove a laser. The Job Manager is now ready to accept jobs from the print driver.



## Printing to the Epilog Job Manager

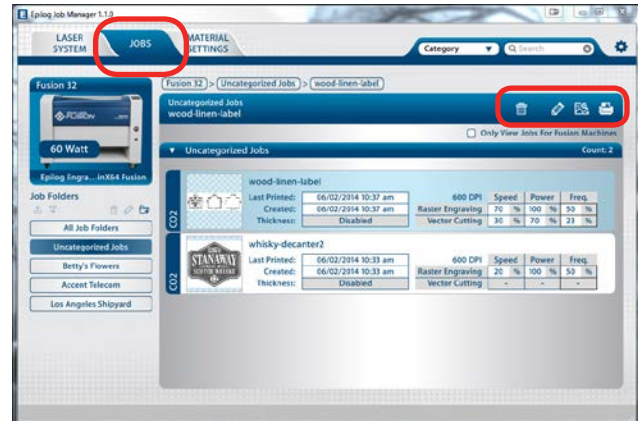
Create a file in your graphic software and set your laser parameters in the print driver.

In the driver you'll see a new selection available under the Center-Engraving area. You can choose to print to either the printer (your Fusion Laser), the Job Manager, or both. This allows you to send your job to the Job Manager without sending it to the laser so you can then print that job directly from the Job Manager at a later time without accessing your graphic software. This is an easy way to set up an entire day's jobs all in one place!



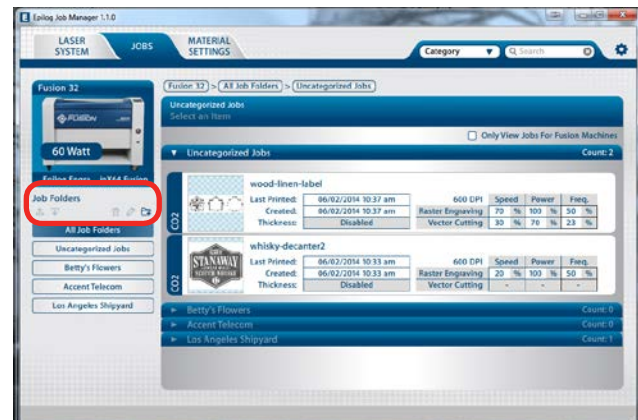
## Organizing Your Print Jobs

Click the **Jobs** tab. All print jobs will be displayed in the Uncategorized folder. Click on your job to highlight it (the wood label file is highlighted in light blue). You can now Print, Edit, Preview or Delete this job using the available icons.



## Create and Delete Job Folders

Click the **Add Job Folders** icon to add folders. We added folders for our three largest customers. You can add as many folders as you'd like.

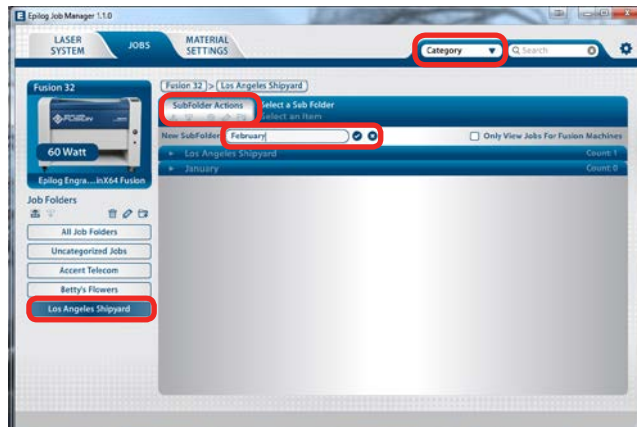


# HOW TO USE THE EPILOG JOB MANAGER

Using the Epilog Job Manager

## Create Subfolders

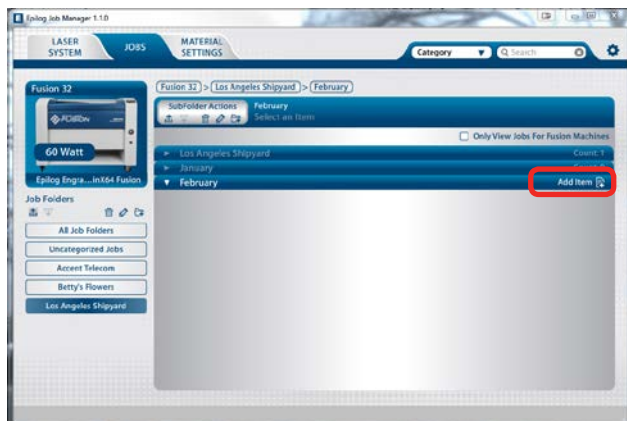
First, **highlight the Job folder** in the left panel where you want to add a subfolder. Below we have highlighted the Los Angeles Shipyard folder. Make sure that **Category** is listed at the top of the page, then click the **Add Subfolder** icon. We've already added a January subfolder, and after clicking on the **check mark** we will create the February subfolder.



## Move an Uncategorized File to a Subfolder

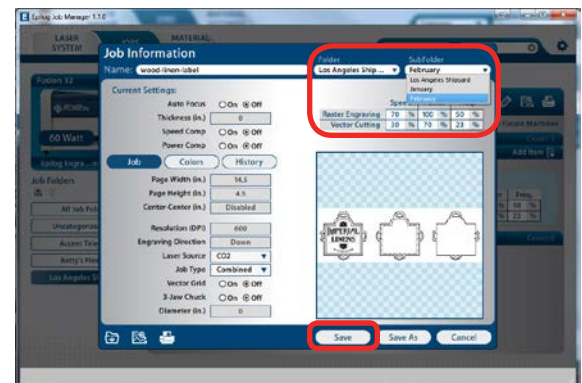
When you highlight a subfolder you will see **Add Item** on the right side of the folder. Click **Add Item** to move a job from the Uncategorized folder to this subfolder.

**Select the job** you want to move and click **OK**.



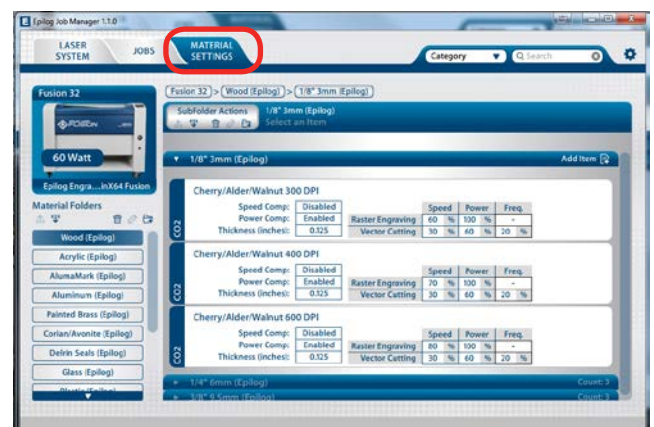
## Move a Job Between Folders

You can also move any job to another folder or subfolder by **double-clicking on the job**. Select the Folder and Subfolder from the drop-down menus where you want to save the job. You can save the job with the same name or you can save as a new job. You can also modify your laser settings and save them with the job. Click **Save** to continue.



## Using the Material Setting Configurations

The Material Settings tab stores all of the suggested laser parameters like speed, power, etc. These settings were loaded based on the wattage you specified in the Laser System tab (adding your laser was the very first thing you did to start using the Job Manager).



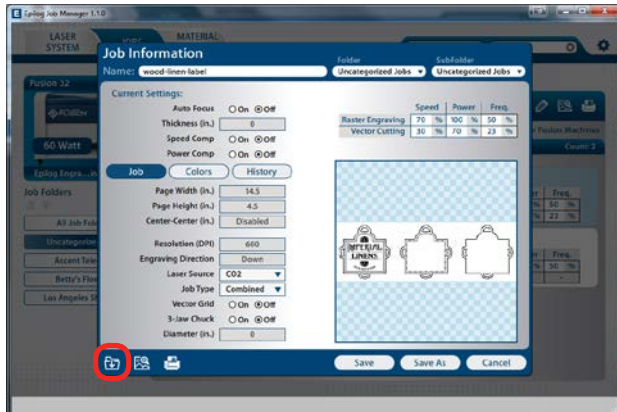


# HOW TO USE THE EPILOG JOB MANAGER

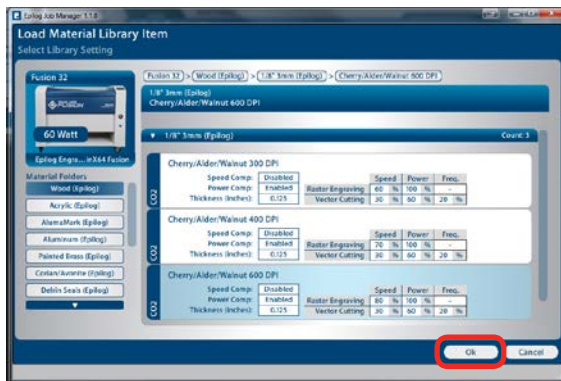
Using the Epilog Job Manager

To use the material settings that are automatically loaded in your Job Manager, go to the **Jobs** tab and **double-click on the job** you want to process.

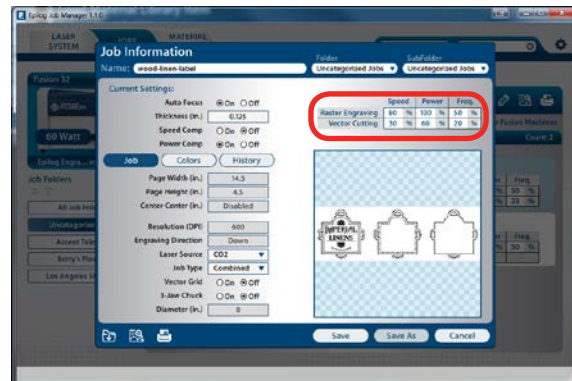
Click the **Import** icon.



Navigate to the material setting you need. We have highlighted **1/8" Cherry/Alder/Walnut 600 DPI**. Click **OK**.



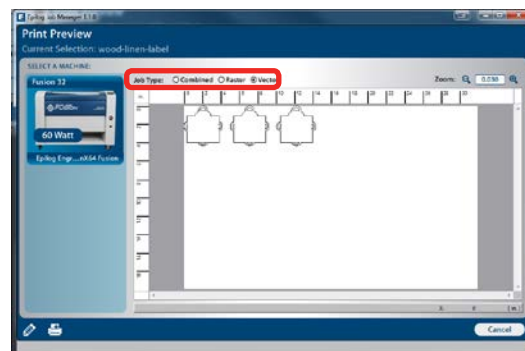
Your new settings have been automatically applied to your job file. You can now save this file, save the file as a different name or print from this window. Double clicking on the artwork will take you to the full preview window, which is explained in the next frame.



## Previewing Your Job

There are three levels of preview available in the Job Manager: a thumbnail, small preview and full preview. Clicking a thumbnail will take you to a small preview, then clicking on the small preview takes you to the full preview, where you can zoom to the pixel level.

When you are in the Full Preview mode you can preview just the raster components of your job, or just the vector components. We have selected vector to show only the vector components of this job. The preview mode is very useful in identifying unwanted vector components in a job.



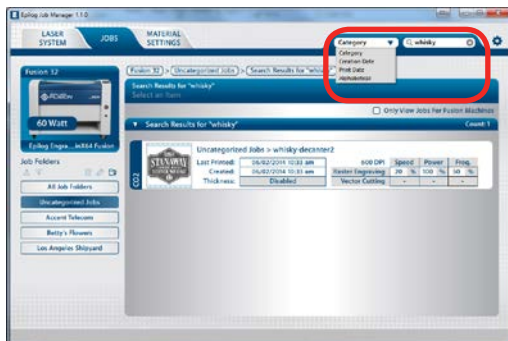
# HOW TO USE THE EPILOG JOB MANAGER

Using the Epilog Job Manager

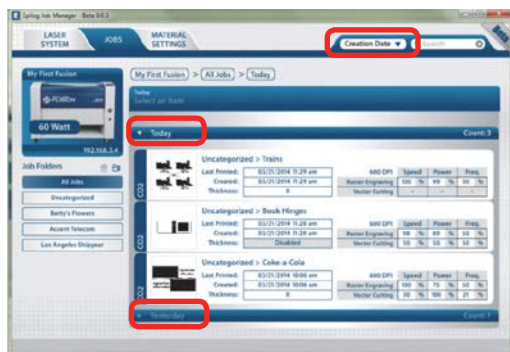
## Searching For a Job

The Job Manager has a powerful search function. Type in part of a file name and press enter to find all files related to that name.

You can organize files by category, creation date, print date, or alphabetically to find a specific file.



Notice that the jobs are displayed differently if you change the search category to **Creation Date**. Your jobs are now displayed by date, not by category. Once the search is finished and the job is found, most users revert back to the default selection of category.



## Finding Job History

The Job Manager allows you to see a full print history of a job, including settings you used in each print. The History window shows you the history of this job, what machine it was printed to, when it was first printed (Initial Print), all subsequent prints, and all laser parameters used. To access this, double-click on the job, then select **History**.



You can now modify, print or save from this window using the listed settings or with new setting. The new setting will be saved as the next print job complete with time stamp and date.

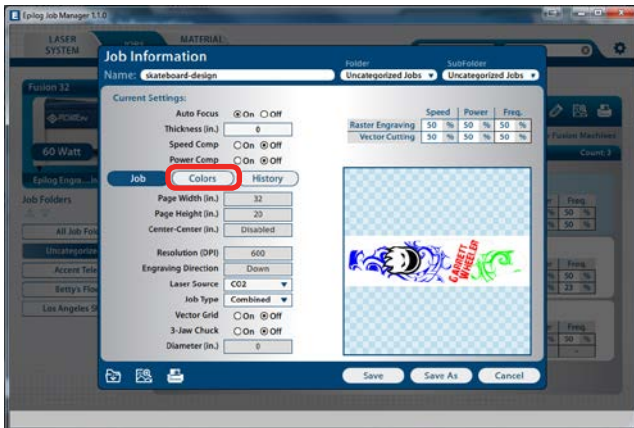


# HOW TO USE THE EPILOG JOB MANAGER

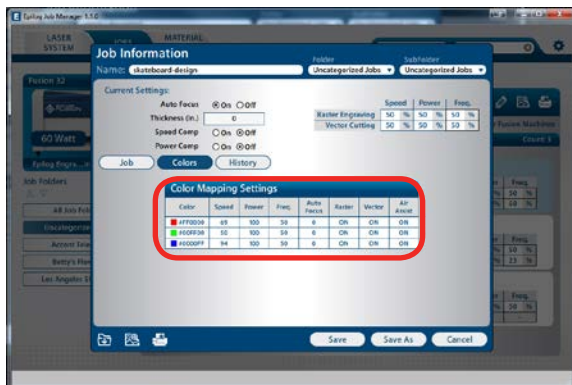
Using the Epilog Job Manager

## Color Mapping

To access the Color Mapping settings used in a file, double-click on the file to open the Job Information, then click the **Colors** button.



You can modify the settings, save as a new job, save as the same job, print, preview, etc. from this window.



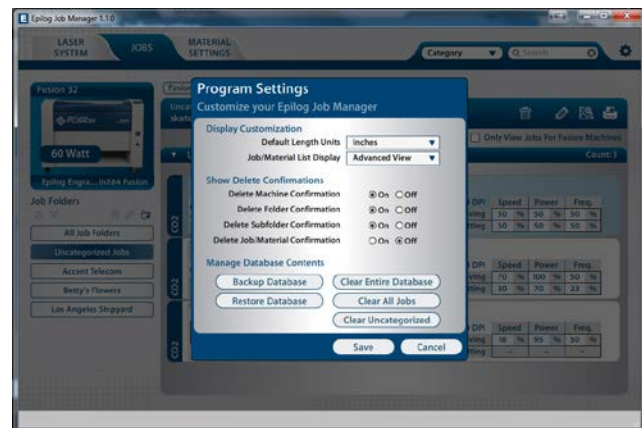
## Changing Program Settings

You can access the Program Settings by clicking on the gear at the top left of the page.



On this screen you can set several different system settings, including:

- **Default Length Units:** Choose from inches, millimeters, or centimeters.
- **Job/Material List Display:** To speed up job loading when you have a long job list, you may want to change to basic view for faster loading.
- **Delete Machine/Folder/Subfolder/Job/Material Confirmation:** Turn delete confirmation message on or off.
- **Backup Database:** Save a backup of all files, material settings, etc.
- **Restore Database:** Reload settings from a previous backup.
- **Clear Entire Database:** Delete all settings, machines and jobs from the database.
- **Clear All Jobs:** Delete all jobs in the database.
- **Clear Uncategorized:** Clear out all uncategorized jobs in the database.



We will be adding new features to the software often, so sign up for the Fusion Driver Update Notification list on at [www.epiloglaser.com/tech-support/fusion-drivers.htm](http://www.epiloglaser.com/tech-support/fusion-drivers.htm).