

# Section 5: Installing the Epilog Dashboard Print Driver - Windows XP or 2000

---

## *In This Section*

- This section applies to Windows XP/2000 only. Installation instructions for Windows Vista are found in *Appendix C – Additional Dashboard Print Driver Instructions*, of this manual
  - Installing the Dashboard Print Driver Using an USB Connection
  - Installing the Dashboard Print Driver Using an Ethernet Connection and a Crossover Cable
- 

The Epilog Dashboard is the print driver that allows your computer to talk to your Epilog laser system when either the USB or Ethernet Crossover cables are connected. *The Dashboard is designed for use with Windows XP, Windows 2000 and the 32 bit version of Windows Vista (32 bit is the standard version).* The driver is included in the accessories kit on a CD-ROM or on our web site - [www.epiloglaser.com](http://www.epiloglaser.com). You will need to install the Dashboard by following the procedures on the following pages.



There are two ways of installing the Epilog Dashboard. Both methods are very similar, and your computer configuration will determine which method to use.

1. The first method is using the USB connection. This is very straight forward and easy to accomplish.
2. The second method is using the Ethernet connection. This process is very similar to the USB installation, but there are a couple of important additional steps.

Instructions for installing the Dashboard using the Windows Vista operating system are included in the appendix.



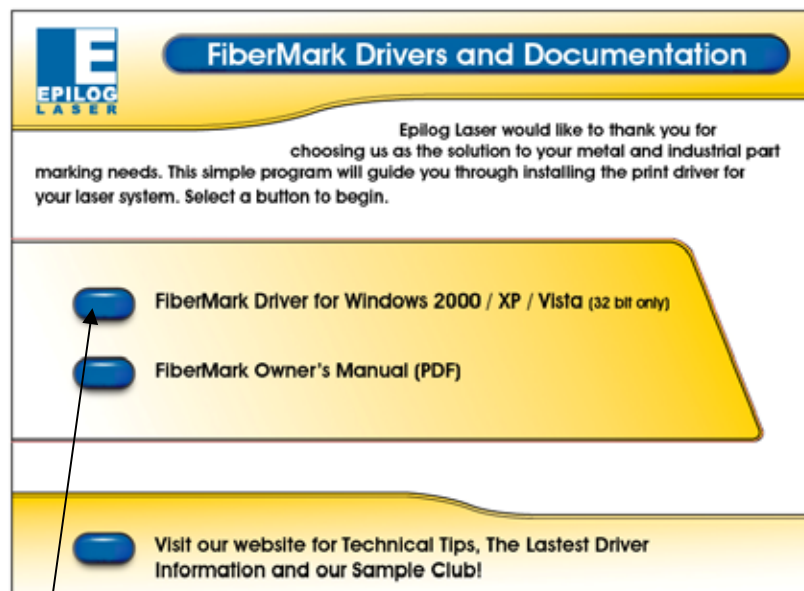
*The FiberMark driver will be identified as the “Epilog Fiber Laser Win32” when it is installed onto your computer.*

## Section 5: Installing the Epilog Dashboard Print Driver- Windows XP or 2000

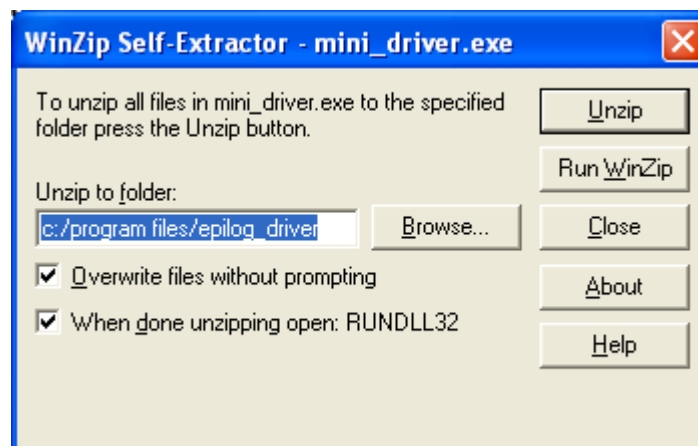
### Installing the Dashboard Driver Using a USB Connection and Cable



1. Insert the Epilog Laser CD into your computer's CD player. It should Auto-Start and the following window should appear:



2. Click the *FiberMark Driver* button and the following window will appear:

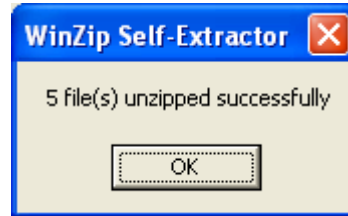


# Section 5: Installing the Epilog Dashboard Print Driver- Windows XP or 2000

---



3. Click on the Unzip button. It will take just a few seconds for the following window to appear:

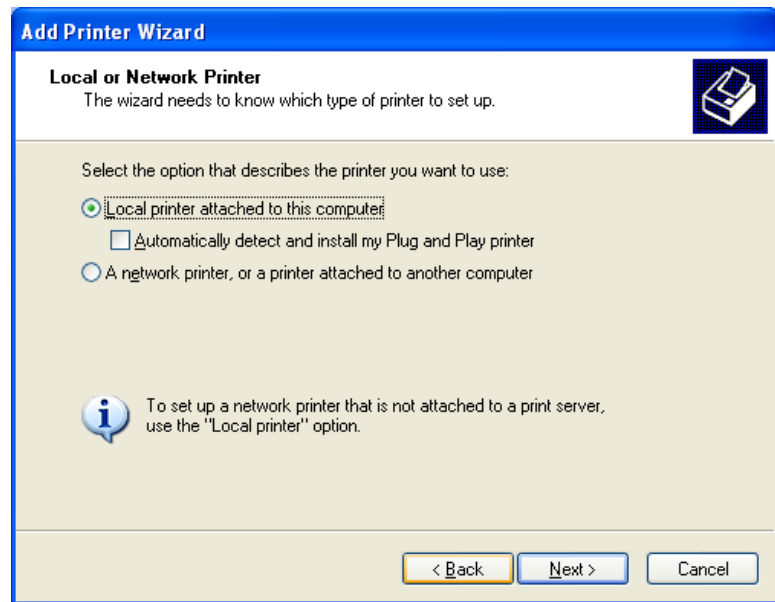


4. Click on OK and the following window appears:

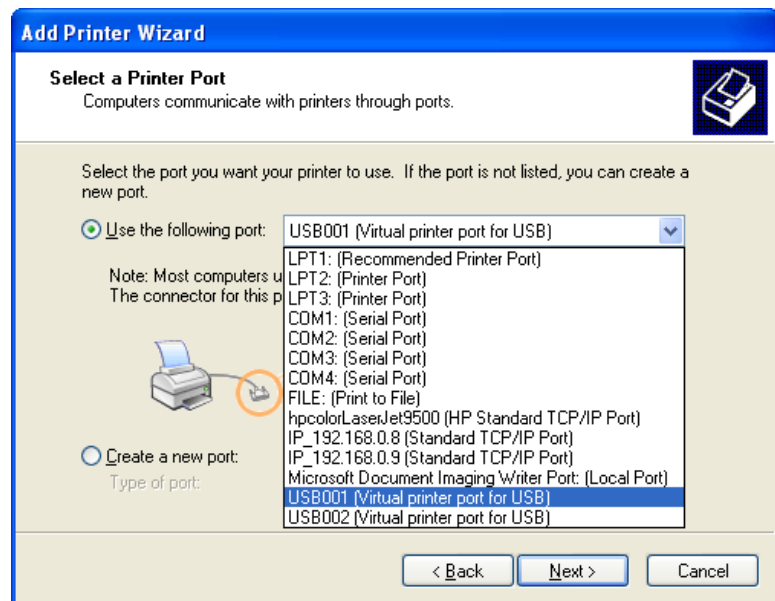


Click the *Next* > button to continue

# Section 5: Installing the Epilog Dashboard Print Driver- Windows XP or 2000

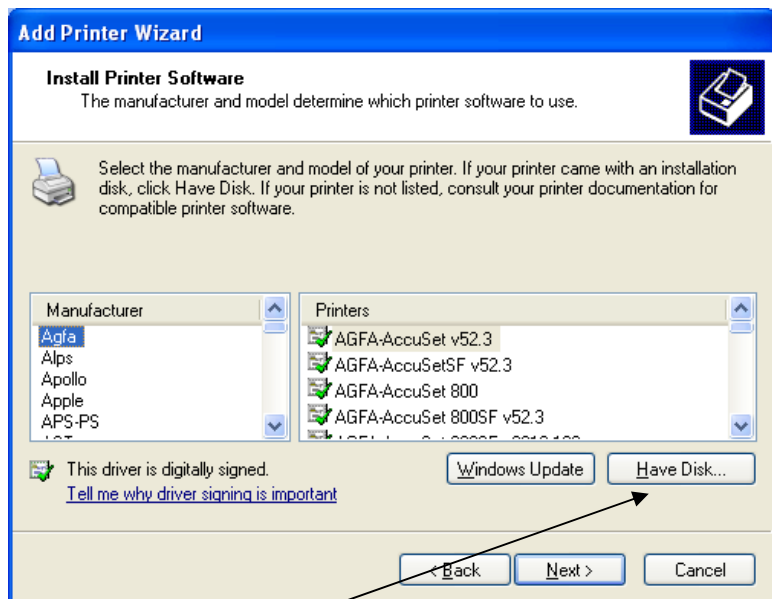


Select Local printer attached to this computer  
Deselect Automatically Detect and Install  
Click the Next> button to continue.

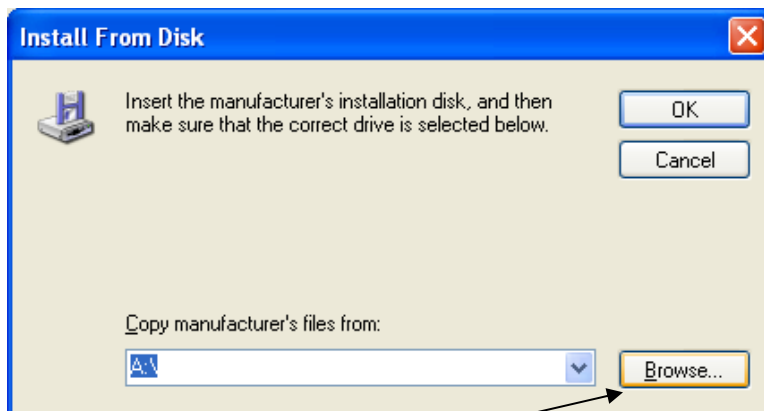


Select one of the USB (USB001 or USB002) ports and then Click on *Next* > to continue.

# Section 5: Installing the Epilog Dashboard Print Driver- Windows XP or 2000

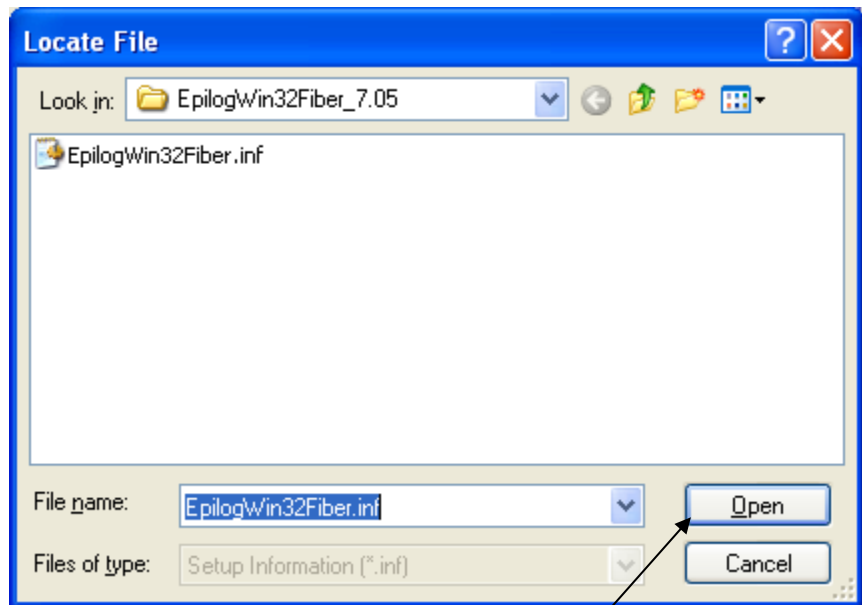


Click the **Have Disk** button. The following window appears:

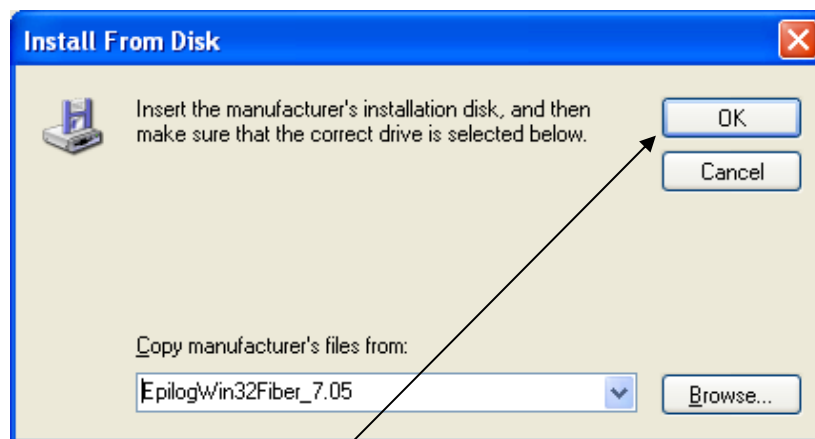


Click the **Browse...** button.

# Section 5: Installing the Epilog Dashboard Print Driver- Windows XP or 2000

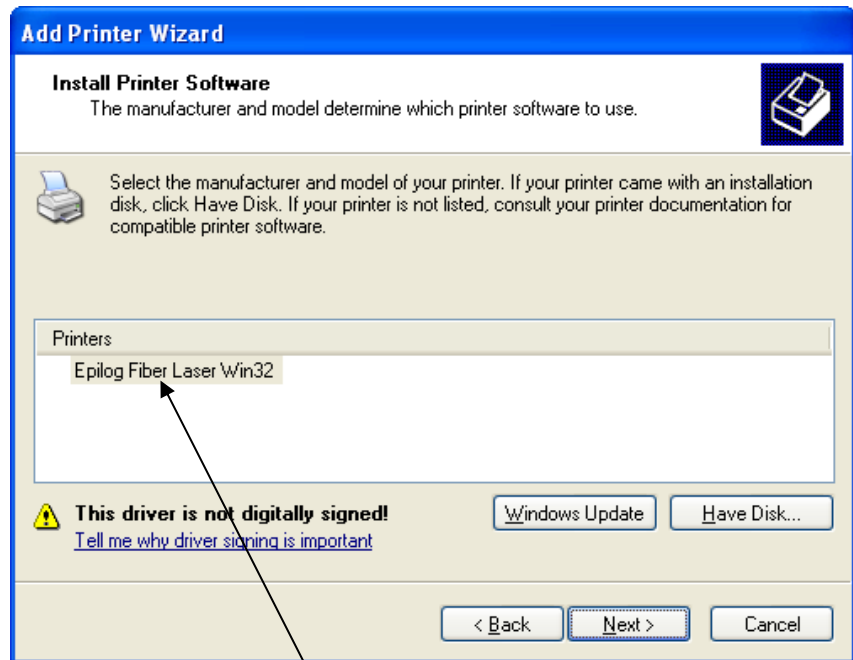


Click on the *EpilogWin32Fiber.inf* file then click on the *Open* button.

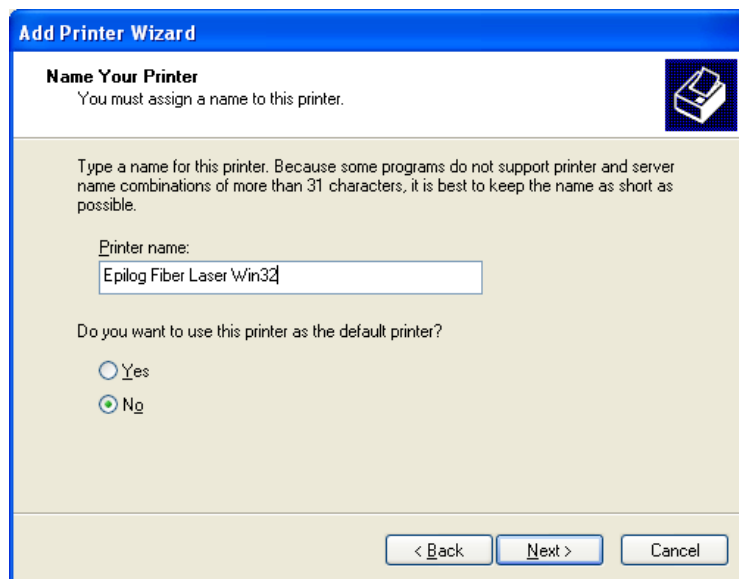


Click on the *OK* button.

# Section 5: Installing the Epilog Dashboard Print Driver- Windows XP or 2000

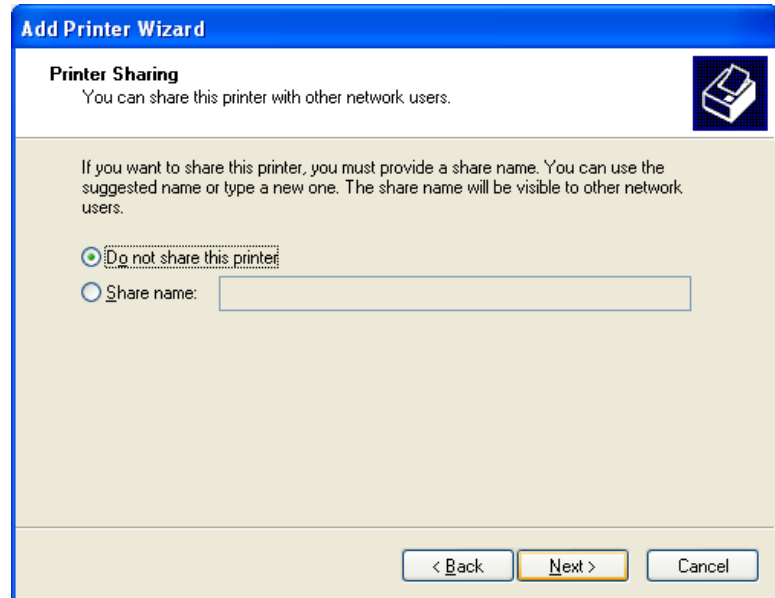


Select the **Epilog Engraver Win32** driver and then click on the *Next*> button.



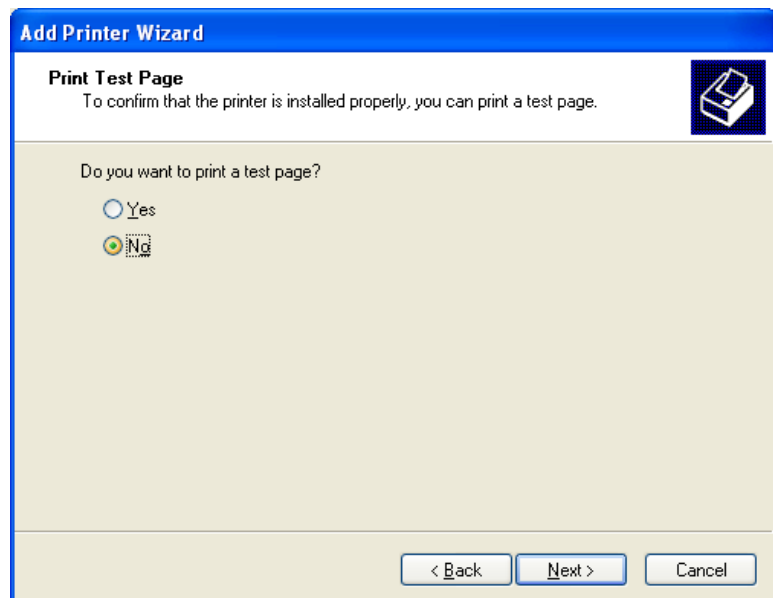
Name your printer and determine if you want the laser to be the default printer. You probably do if the laser is the only printer connected to your computer. Click the *Next*> button to continue.

# Section 5: Installing the Epilog Dashboard Print Driver- Windows XP or 2000



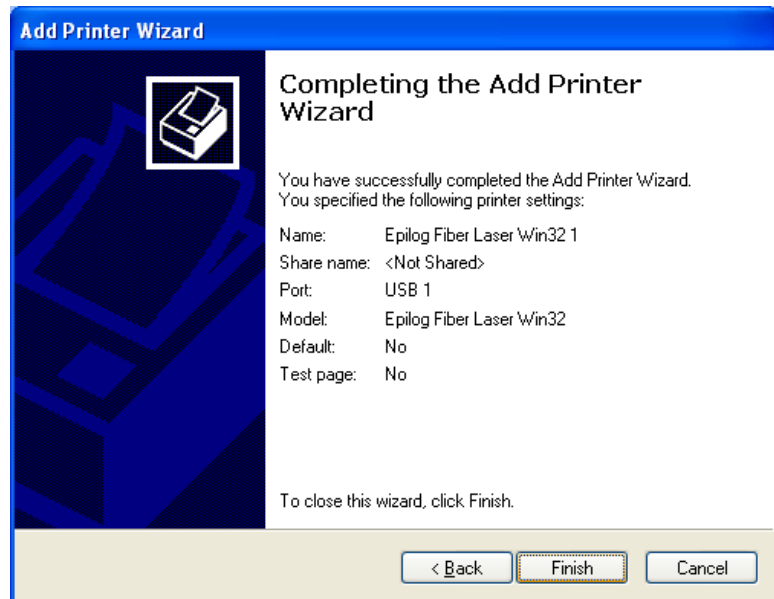
Select Do not share this printer, then click on the *Next*> button to continue.

Select *No*.  
Click on the *Next*>  
button





# Section 5: Installing the Epilog Dashboard Print Driver- Windows XP or 2000



Click on the *Finish* button.



Click on the *Continue Anyway* button. While the Dashboard print driver has not been tested by Microsoft, it will not destabilize your computer.

*That's it!* You're now ready to print to your laser system!

## *Section 5: Installing the Epilog Dashboard Print Driver- Windows XP or 2000*

---

### *Installing the Dashboard Driver Using an Ethernet Connection and a Crossover Cable*



(Skip this part if you are using a USB cable described in the previous section.)

There are three easy steps involved in setting up the laser and computer system to operate through an Ethernet connection:

1. Setting the IP Address from the laser keyboard.
2. Setting up the IP Address in the computers TCP/IP.
3. Dashboard Print Driver Installation



**Note:** The following instructions work only for a direct connection from the computer to the Epilog laser using a Crossover cable. This procedure does not work with a hub or a server. For Ethernet connections that require a hub, server, or multiple machines/computers, please consult with your network administrator.

### *Hardware Requirements*

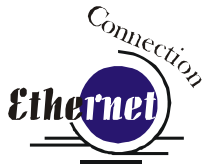
- A 10Base-T or 10/100Base T Ethernet network card installed in your computer. All brand name computers that have been built in the last couple of years should have come standard with an Ethernet card installed.
- A crossover cable connecting your computer to the laser (included in your accessories kit).



Please Note! - The crossover cable looks almost exactly like a standard straight-through network cable, but they have different purposes for making network connections. Normally, the crossover cable should only be used when connecting the Epilog laser directly to your computer. Ask your network administrator for assistance if you are unsure of which type of cable you have. It is a good idea to place a tag or label on the cable indicating if it is a crossover cable or standard (CAT5) straight-through cable.

# Section 5: Installing the Epilog Dashboard Print Driver- Windows XP or 2000

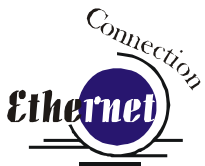
---



## ***Step 1: Setting the Ethernet IP Address on the Laser***

Be sure all packaging materials have been removed then plug the power cord into the laser system and turn the machine “ON”. The laser will boot up, beep, and the carriage will find its home position.

Although it may seem intimidating if this is your first experience setting up Ethernet connections, it’s really quite simple to accomplish. If you have problems, don’t panic! You cannot do anything wrong that starting over will not fix!



There are three network protocols that will need to be set. They are set in the following order.

1. IP ADDRESS
2. SUBNET MASK
3. GATEWAY



The FiberMark control panel serves two functions. It acts as the main control panel for all of the common laser functions and it is also used to program some of the setup functions of the laser system. In standard working mode the keys correspond to the descriptive text below the key. In programming mode, the keys correspond to the numbers printed on the keys. The numbers are activated only when the machine is in its programming mode that is described below. The diagram below shows the front control panel.



# Section 5: Installing the Epilog Dashboard Print Driver- Windows XP or 2000

---



## IP ADDRESS

In order to program the laser system with the appropriate IP Address, you will need to activate the programming mode through the sequence of steps described below.



4. To go into program mode and set the IP Address, press the **GO** and **POINTER** buttons simultaneously on the control panel. You will see “**FUNCTIONS MENU**” displayed on the control panel LCD screen. You are now in programming mode and the numbers on the keys have been activated.
5. Press the **GO** button. - “**SERIAL #**” will appear on the screen. This is a factory set number and corresponds to the serial number of the laser system. You should not change this serial number!
6. Press the **GO** button again. - “**IP ADDRESS**” will appear on the screen.
7. Press the **GO** button again. - The factory set IP address will appear on the screen. It will look something like this: “192.168.003.004”, with a flashing box over the 1 in 192.



*Note – This procedure uses 192.168.003.004 as the sample IP Address. Machines leaving the Epilog factory have this IP Address preset so you do not have to change anything unless you want to use a different address.*

8. To change the IP Address, follow these instructions:
  - a) If you want to change the 1 in 192 to any other number, simply press the number key for that number. For example, if you want to change the 1 (in 192) to a 4, press the “**4**” (**Power**) key. After pressing this key the 1 will change to a 4 and the cursor box will advance to the next number (in this case, the number 9).
  - b) 5.2 At this point, press the appropriate key for the second number (if you want to keep the 9 a 9, you still must press the “**9**” (Pointer) key.
  - c) 5.3 Finally, press the appropriate key for the third number.
  - d) After pressing the key for the third number the flashing cursor box will go back to the first number – it WILL NOT shift to the next set of three numerals. If you want to move to the next group of three numbers simply press the **GO** button. Pressing **GO** will cause the flashing cursor box to shift right to the next set of three numbers. Repeat this process to change any of the numbers.



*Note: There is no way to simply scroll through the IP Address numbers and skip over single numbers you do not want to change. You can skip groups of three by pressing “Go”, but skipping single numbers cannot be done. There is also no*

# Section 5: Installing the Epilog Dashboard Print Driver- Windows XP or 2000

---

way to move the flashing cursor box backwards. The cursor scrolls through each three number group continuously until you press the “Go” button, where it will then go to the next three number group.



e) Repeat this process for all of the number groups to get the IP Address you need.

9. After all the IP address numbers have either been changed or verified as the ones you need, press GO again – this will move you to the next screen which is the “SUBNET MASK” screen.

## Subnet Mask

1. Press **GO** again to see the “SUBNET MASK” settings. Use the same process of number selection using the keypads to select the appropriate number for the “SUBNET MASK”

Note: If you are using the cross-over cable provided by Epilog, make sure the “SUBNET MASK” is set to:

“255.255.255.0”

2. After you have set the “SUBNET MASK”, Press **GO** again.

## GATEWAY

1. You will now see “GATEWAY”, Press **GO** again.
2. The **GATEWAY** setting can be set using the same process of number selection using the key pads to select the appropriate numbers for “GATEWAY”.



Note: The GATEWAY address is not important if you are using the provided cross over cable. If you are running your laser through a network, you will need to set the laser GATEWAY numbers to correspond to your network.

At the end of the programming process, the laser will prompt you to either SAVE or NO (Not Save) the numbers you have applied. The Screen will look like:  
Save – GO, No- STOP

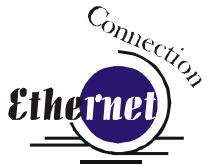
## *Section 5: Installing the Epilog Dashboard Print Driver- Windows XP or 2000*

---

Press the **GO** button to save the changes you made to the network settings. Press the **STOP** button if you do not want to save the changes and you want to return to the factory default.

If at any time in the programming process you want to stop or restart, press the **STOP** button. This will take you out of the programming functions. If you want to restart the programming process, simultaneously press **GO** and **POINTER** to get back to the start of the Function Menu.

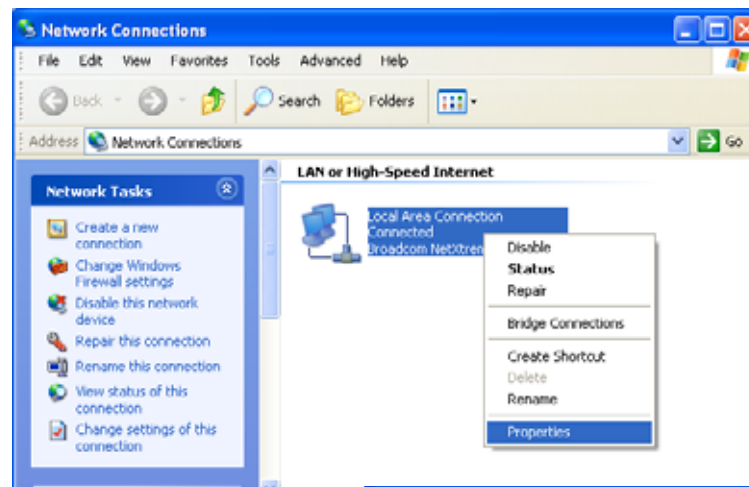
# Section 5: Installing the Epilog Dashboard Print Driver- Windows XP or 2000



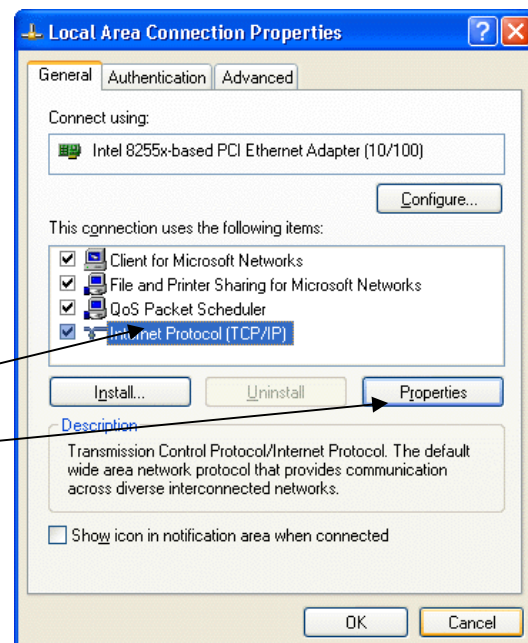
## Step 2: Setting up the Computer's TCP/IP Address

Once you have set the Network settings on the laser, you will need to set the TCP/IP at your computer.

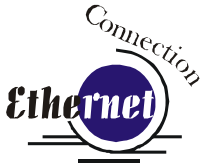
1. From the Start menu at the bottom of your computer monitor screen select **Start | Control Panel | Network Connections**. Right click on the **Local Area Connection** icon, and then select **Properties**.



2. Highlight the **Internet Protocol (TCP/IP)** option.
3. Then click on **Properties**.



# Section 5: Installing the Epilog Dashboard Print Driver- Windows XP or 2000

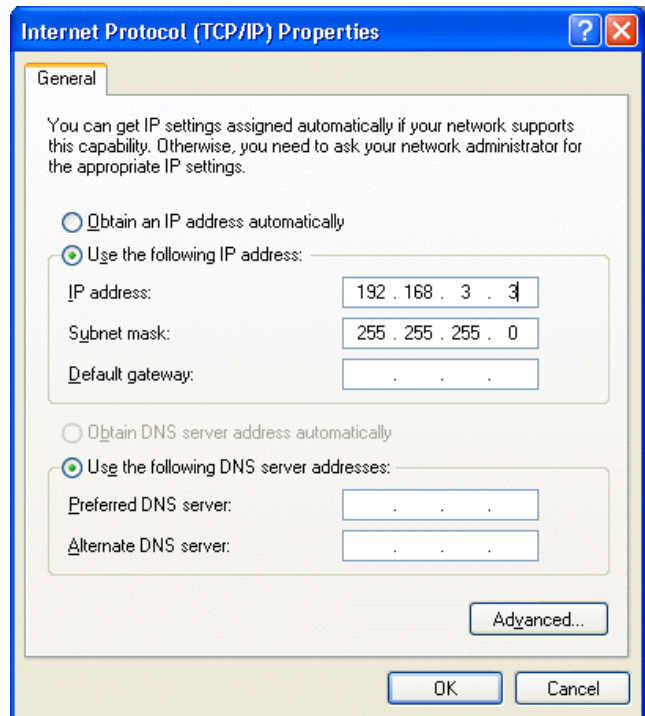


- The window below will appear. Select Use the following IP address radio button.
- Type in the following (leave everything else blank on this page)

IP Address                    192 168 3 **3**  
Subnet Mask                255 255 255 0  
Default Gateway            Leave blank

This number is not an error -- the last digit of the IP address in this window only must be different than the IP address set in the Epilog FiberMark.

- Click the **OK** button in this window and then click on the **Close** button in the next window.
- Your computer is now set to print through a crossover cable to the Ethernet port on the laser.



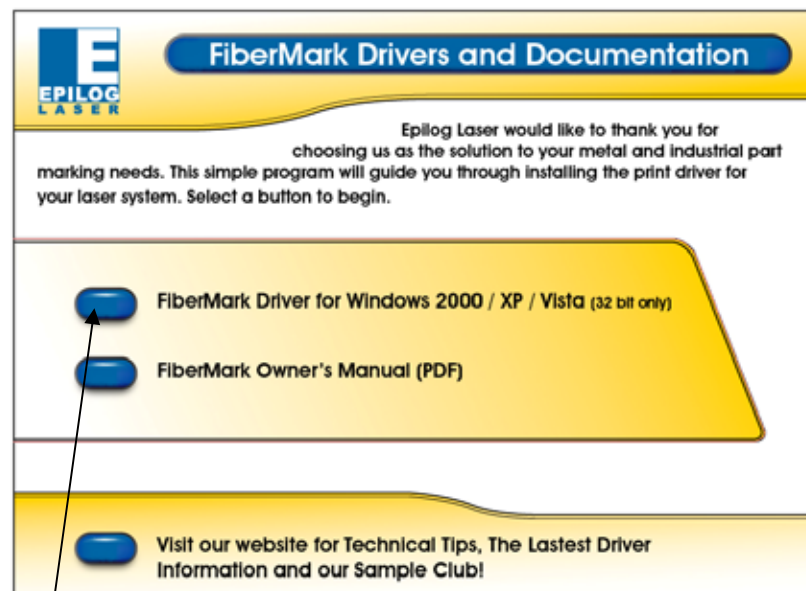


## Section 5: Installing the Epilog Dashboard Print Driver- Windows XP or 2000

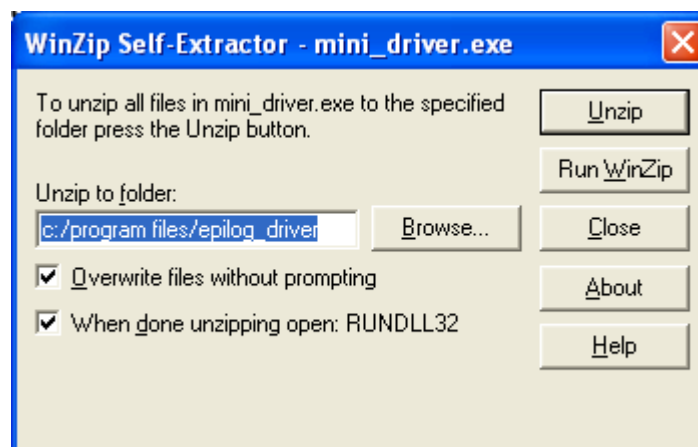
---

### Step 3: Installing the Dashboard Driver for an Ethernet Connection:

1. Insert the Epilog Laser CD into your computer's CD player. It should Auto-Start and the following window should appear (refer to Appendix C if the AutoRun feature does not bring up the following screen):

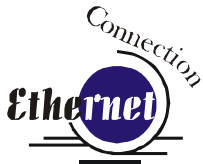


2. Click the **FiberMark Driver** button and the following window will appear:



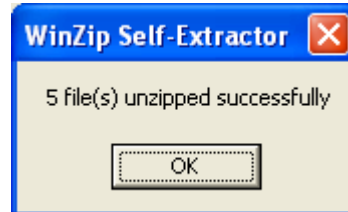
## Section 5: Installing the Epilog Dashboard Print Driver- Windows XP or 2000

---



**NOTE** - When you Unzip the driver files they will be unzipped into the c:/Epilog\_Driver directory. Do not move them from this directory. The installation process looks for them in this directory later on in the process.

3. Click on the Unzip button. It will take just a few seconds for the following window to appear:

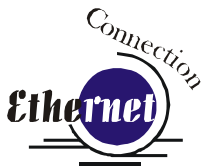


4. Click on OK and the following window appears:

Click *Next* > to continue.



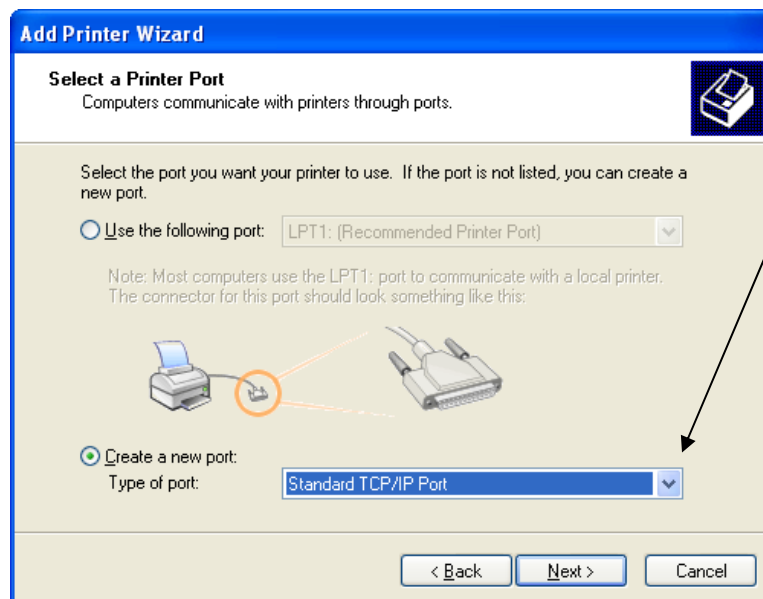
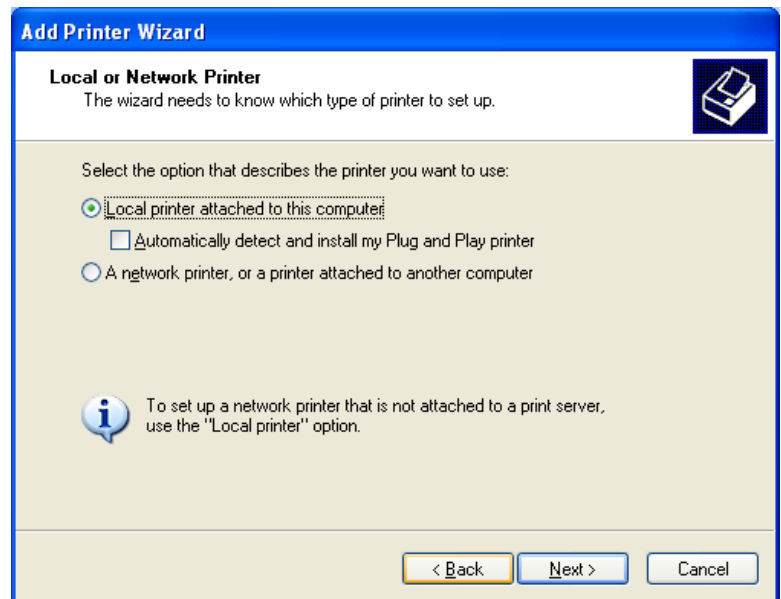
# Section 5: Installing the Epilog Dashboard Print Driver- Windows XP or 2000



Select *Local printer attached to this computer*

Deselect *Automatically Detect and Install*

Click the *Next>* button to continue.

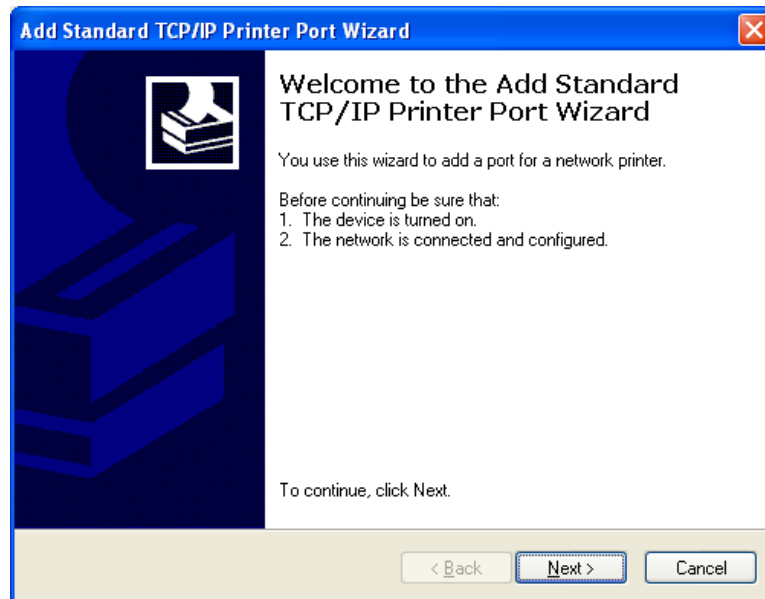
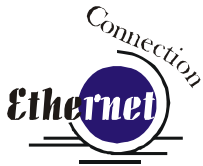


Click on *Select a New Port:*

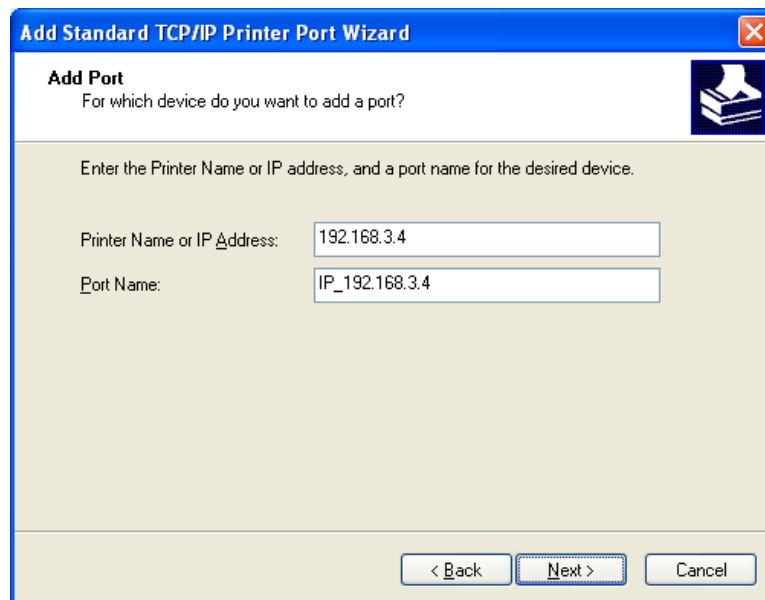
Use the scroll button to select *TCP/IP Port.*

Click *Next>* to continue.

# Section 5: Installing the Epilog Dashboard Print Driver- Windows XP or 2000

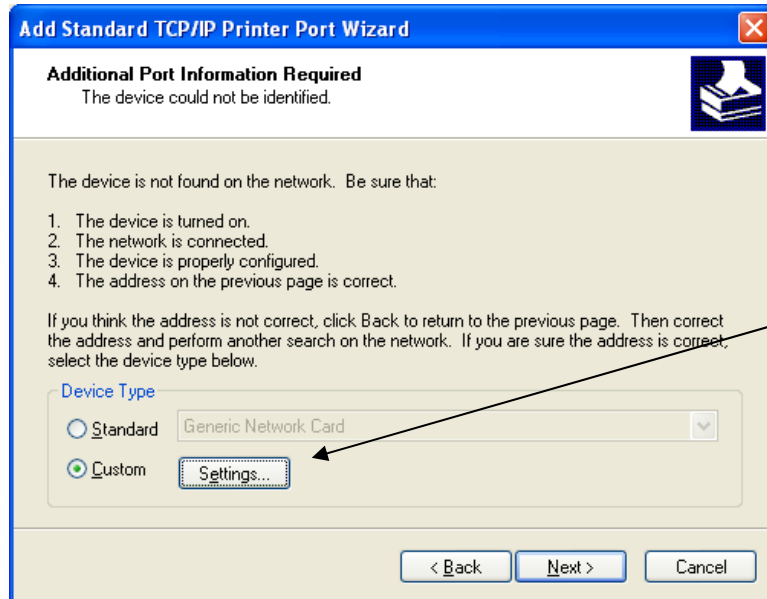
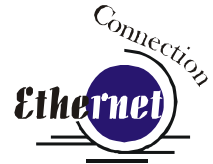


Click *Next*> to Continue.

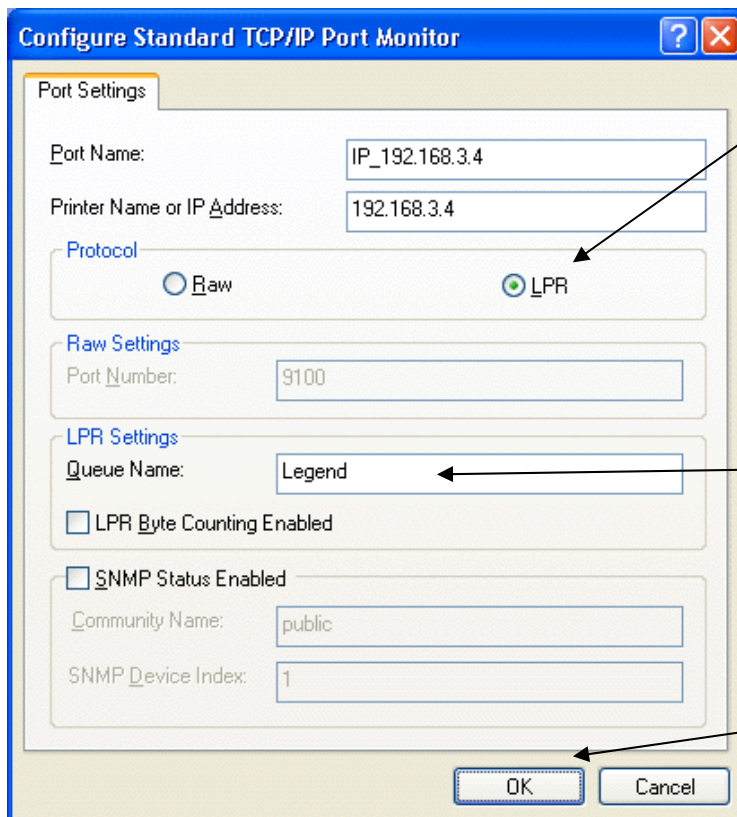


Enter the same IP Address that you set in the control panel (on page 27 and 28). It's important that you use the same address in both places, but the format of the numbers looks a little different. In the control panel the IP Address will look like this: 192.168.003.004. When you enter the IP Address in this window, you do not need the zeros, and the address will look like this: 192.168.3.4.

# Section 5: Installing the Epilog Dashboard Print Driver- Windows XP or 2000



Click *Custom*, and then *Settings*.

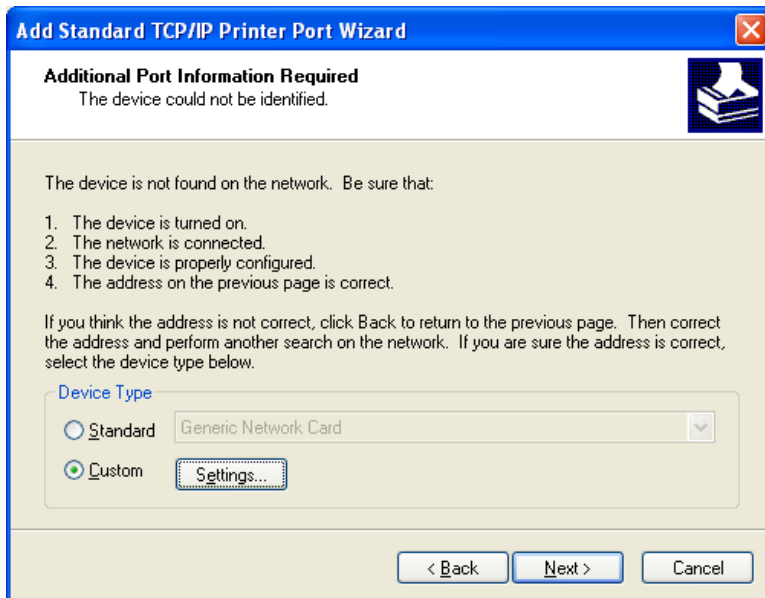
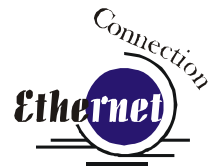


Set Protocol to *LPR*. This is a very important step. Your download time will be greatly increased if LPR is not selected.

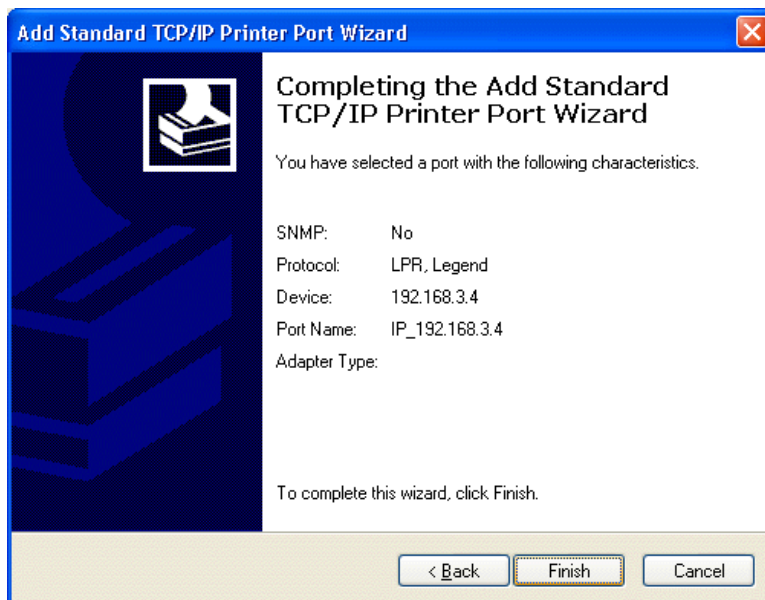
Type *Legend* in the Queue Name box.

Click OK to continue.

# Section 5: Installing the Epilog Dashboard Print Driver- Windows XP or 2000

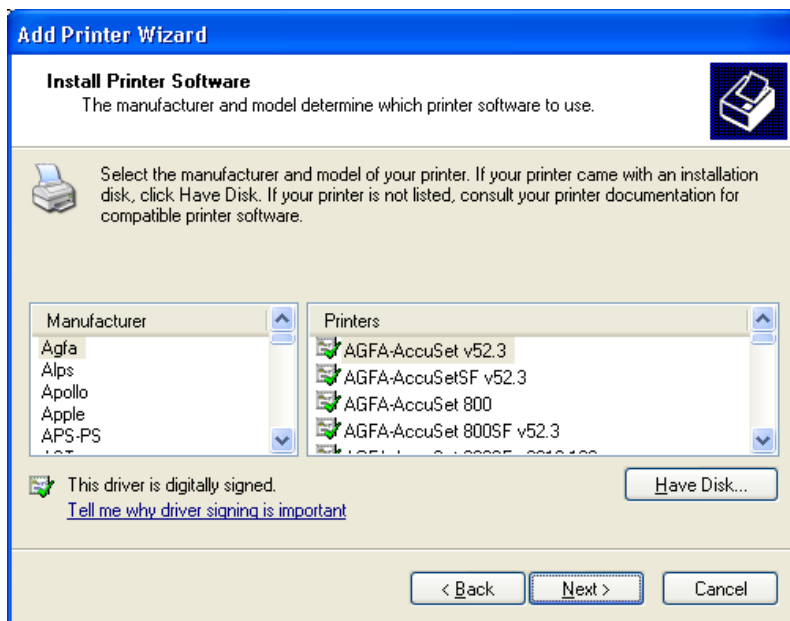
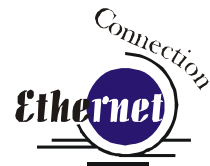


Click *Next*> to continue.

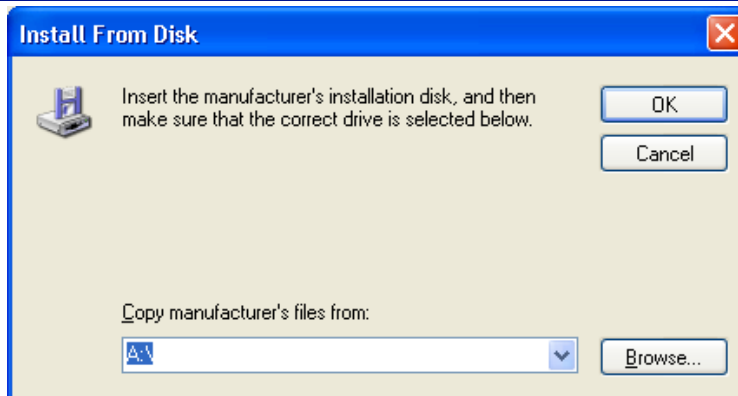


Click *Finish* to continue.

# Section 5: Installing the Epilog Dashboard Print Driver- Windows XP or 2000

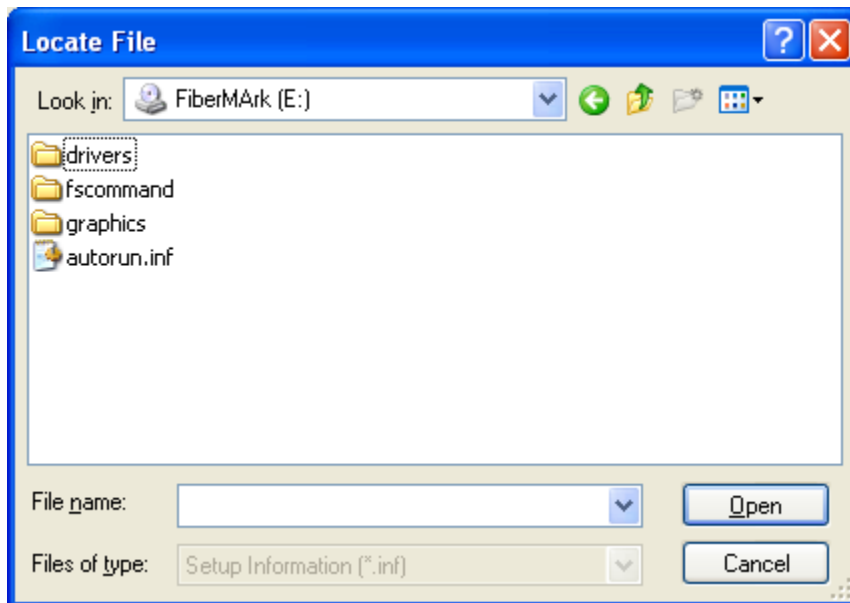
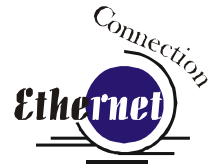


Click *Have Disk...*



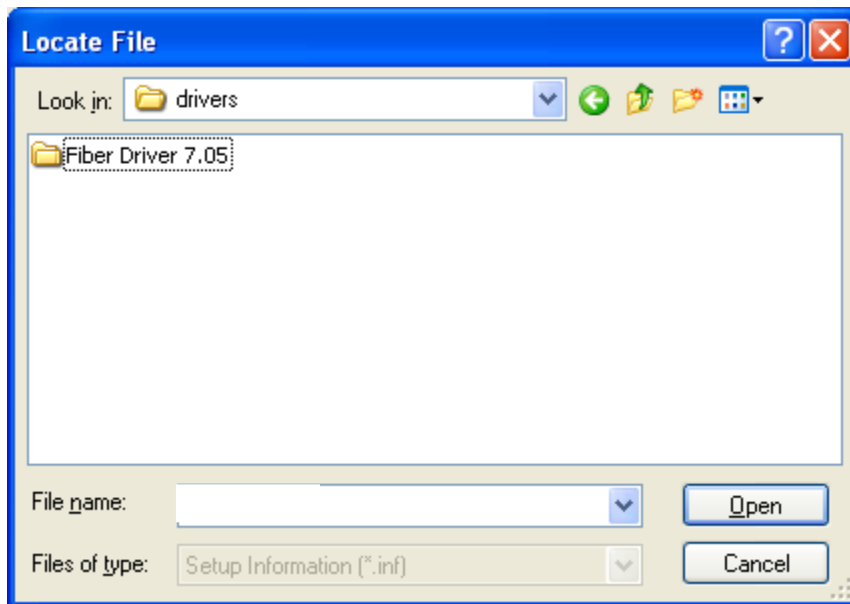
Make sure the Epilog CD-ROM is in the computer's drive and click **Browse...** Select the CD-ROM Drive from the drives listed.

# Section 5: Installing the Epilog Dashboard Print Driver- Windows XP or 2000



Select *Drivers*

Select *Open* to  
continue

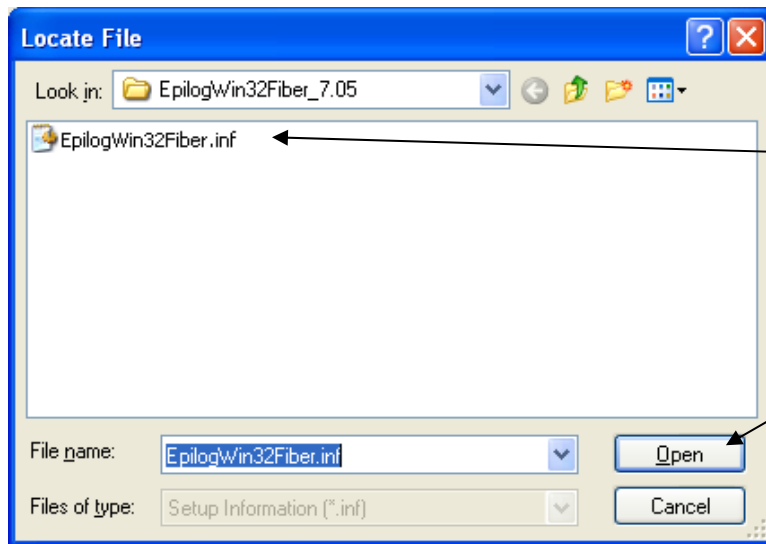
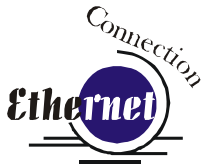


Select Fiber Driver  
X.XX

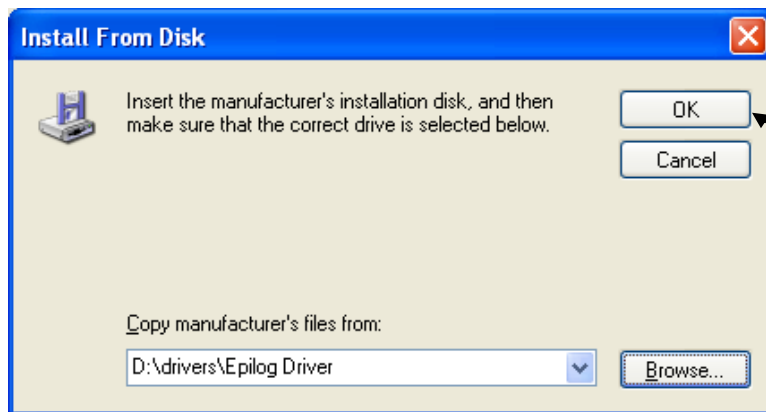
Select *Open* to  
continue



# Section 5: Installing the Epilog Dashboard Print Driver- Windows XP or 2000

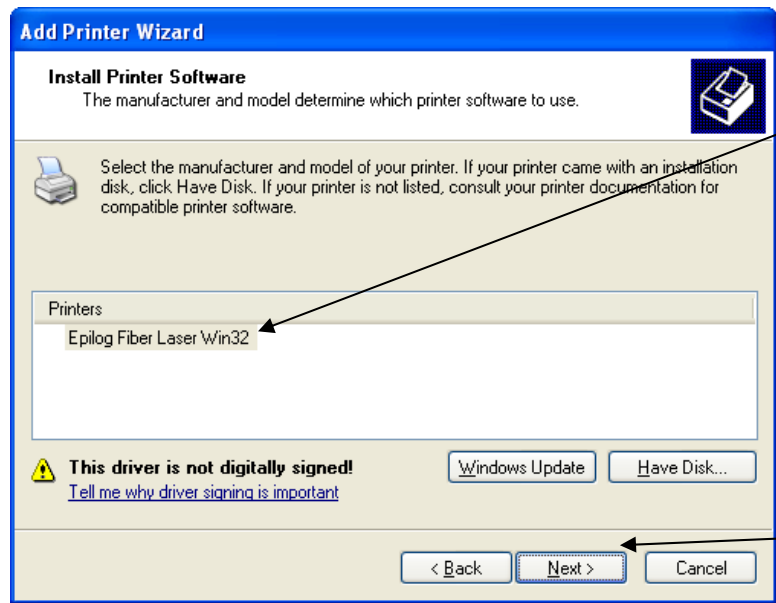
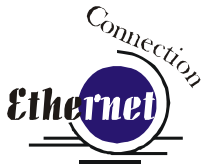


Select **EpilogWin32Fiber.inf**, and then select **Open** to continue.



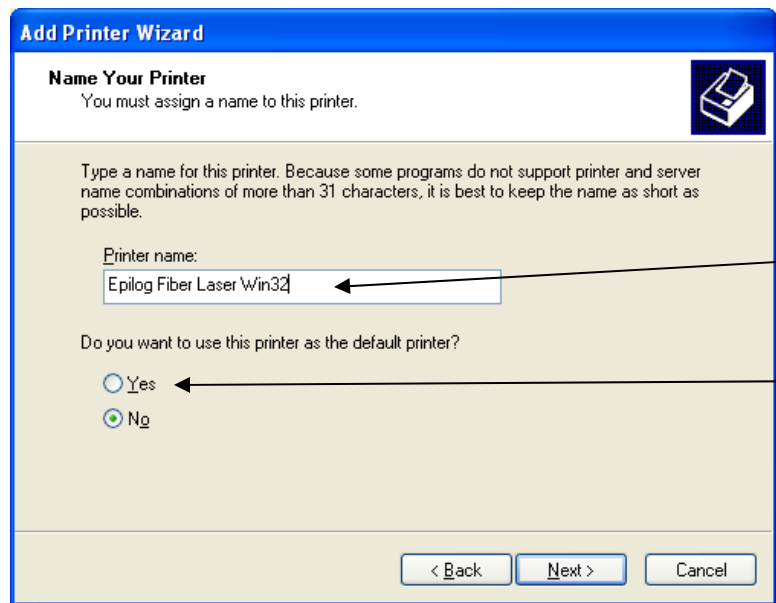
Click **OK** to continue.

# Section 5: Installing the Epilog Dashboard Print Driver- Windows XP or 2000



Select *Epilog Fiber Laser Win32*.

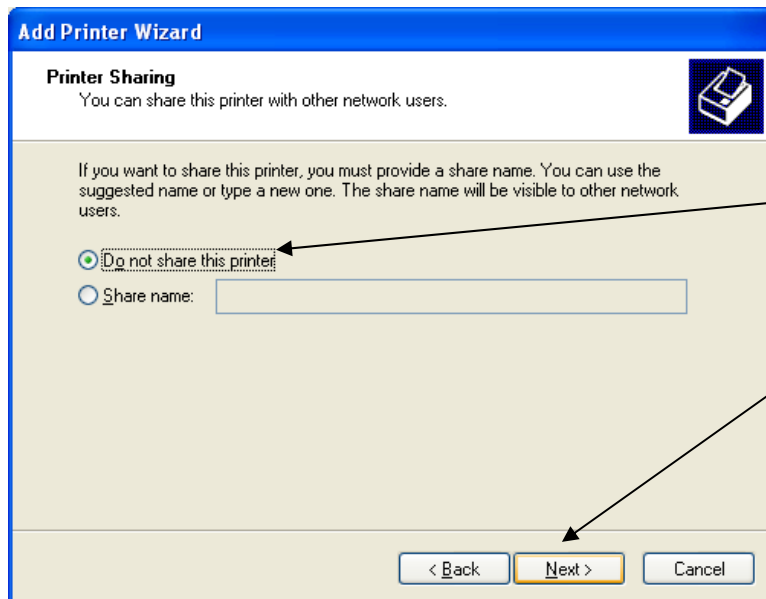
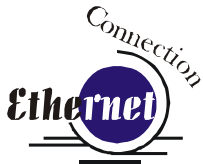
Click *Next*> to continue.



Name your printer and determine if you want the laser to be the default printer.

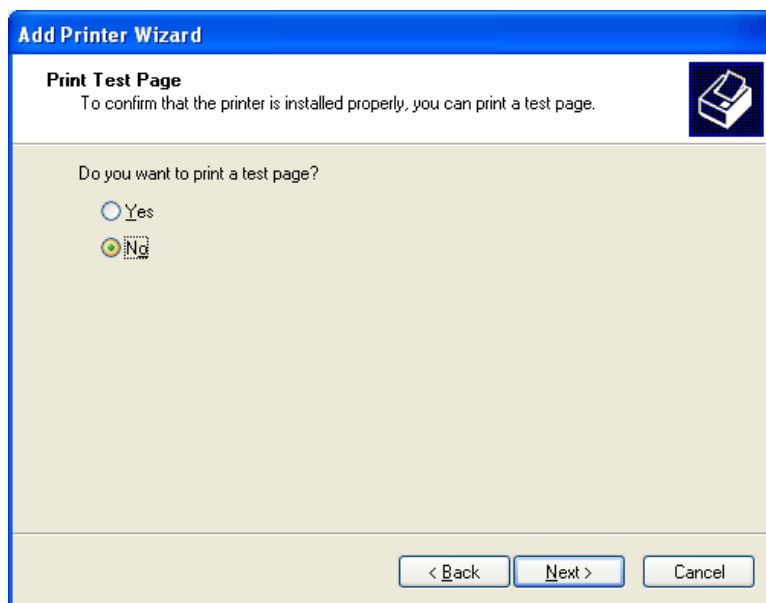
Click *Next*> to continue.

# Section 5: Installing the Epilog Dashboard Print Driver- Windows XP or 2000



Select *Do not share this printer*.

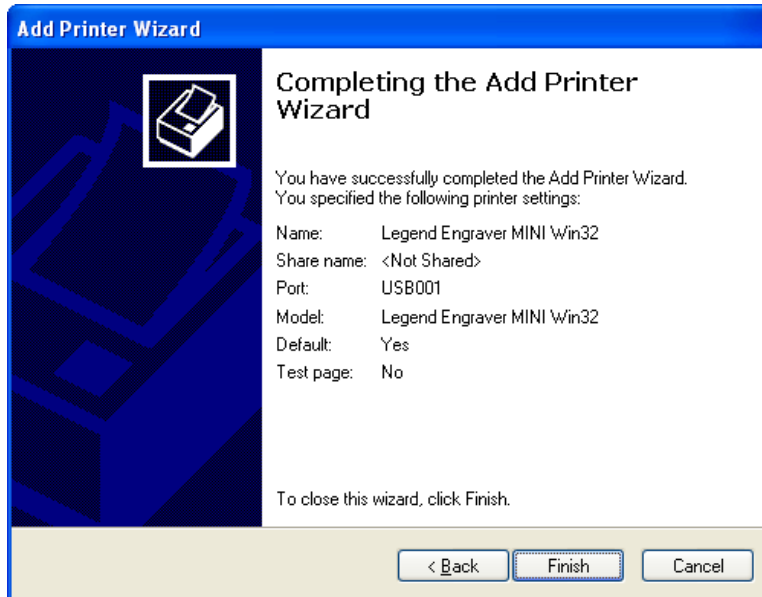
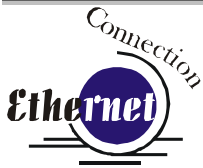
Click *Next>* to continue.



Select *No*

Click on the *Next>* button.

# Section 5: Installing the Epilog Dashboard Print Driver- Windows XP or 2000



Click on the *Finish* button



Click on the *Continue Anyway* button. While the print driver has not been tested by Microsoft, it will not destabilize your computer.

*That's it!* You're now ready to print to your FiberMark laser system!