



EPILOG LASER

DAT Converter 1.0.0



Technical Support: +1 (303) 215-9171

Knowledge Base: support.epiloglaser.com

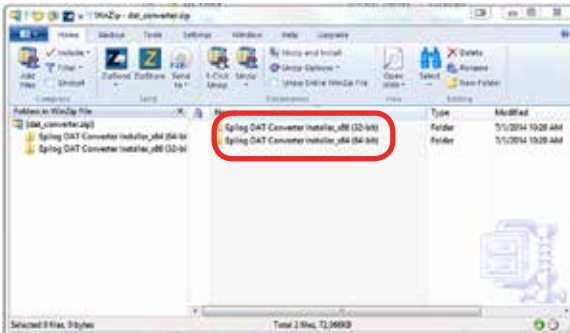
Driver/Firmware Download: epiloglaser.com/tech-support/epilog-drivers.htm

English

INSTALLING THE DAT CONVERTER

How to Install the DAT Converter

1. After downloading the DAT Converter from epiloglaser.com/tech-support/drivers.htm, access either the 32-bit or 64-bit folder, depending on your system.



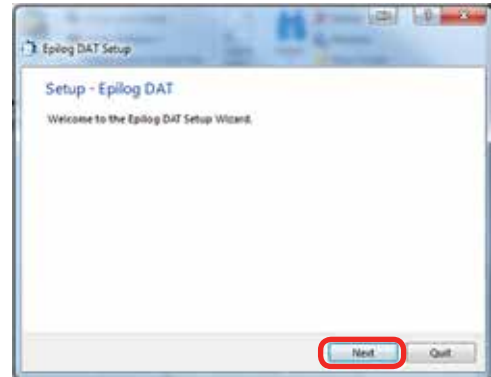
2. Select **EpilogDatInstaller.exe**.



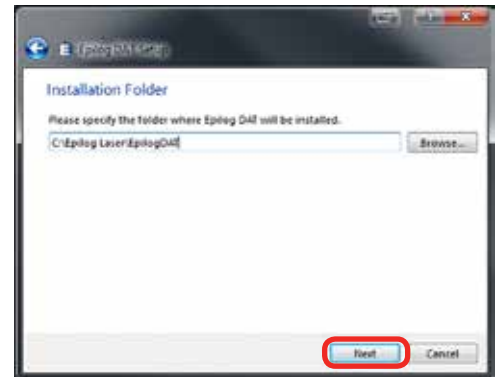
3. Click **Yes**.



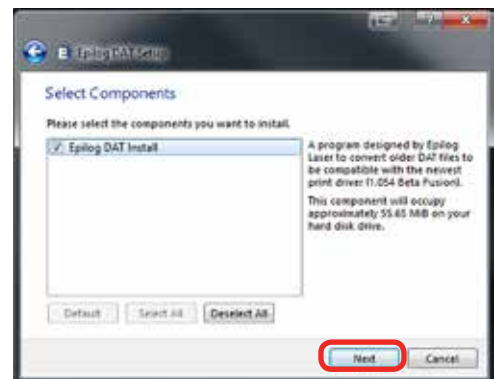
4. Click **Next**.



5. Click **Next**.



6. Click **Next**.

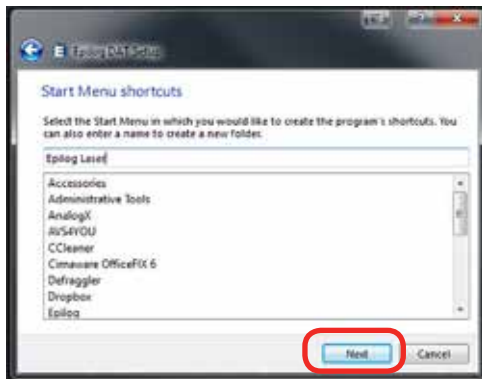


INSTALLING THE DAT CONVERTER

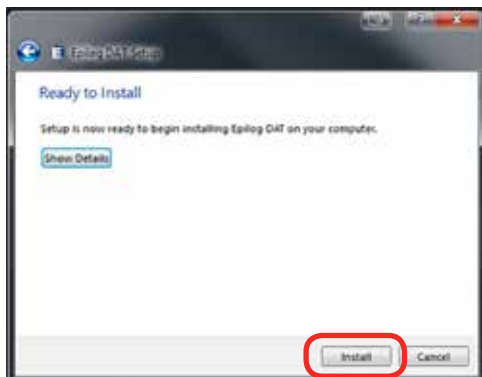
7. Select **I accept the license**, then click **Next**.



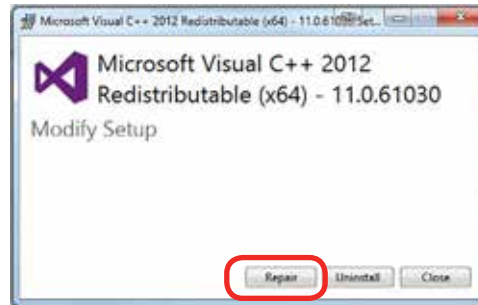
8. Click **Next**.



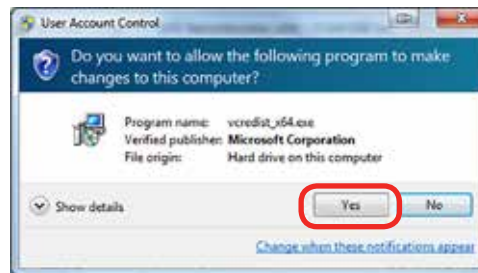
9. Click **Install**.



10. If this screen appears, click **Repair**.



11. Click **Yes**.



12. Click **Close**.



13. Click **Finish**.

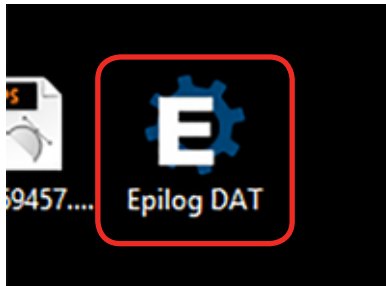


USING THE DAT CONVERTER

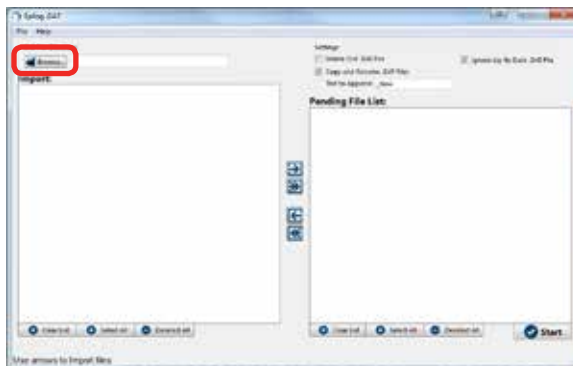
How to Use the DAT Converter

How to Use the DAT Converter

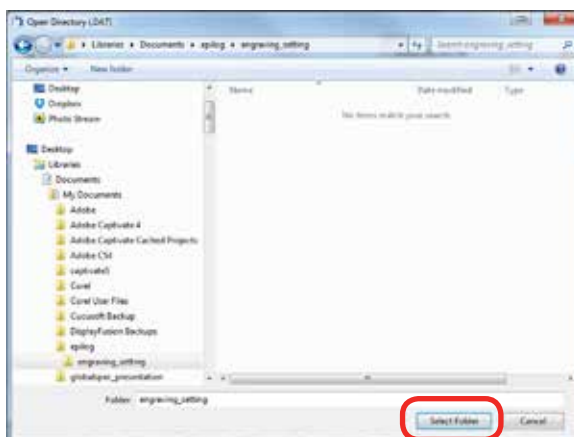
1. Double click the **DAT Converter icon** that has been added to your desktop.



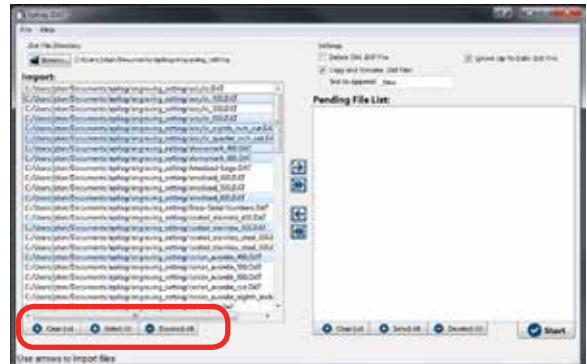
2. In the program, click **Browse**.



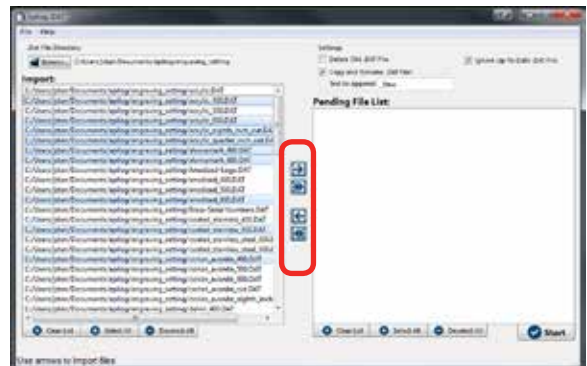
3. Browse to the folder where your DAT files are saved. It is usually in your Documents folder > Epilog > Engraving_Settings. Click **Select Folder**.



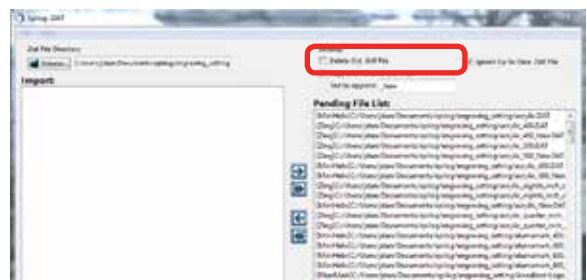
4. All .DAT files will appear in the import list. Select the files you want to process from the Import list by selecting the files or using the buttons. **Clear List** will clear out the list, but not delete the files. **Select All** will allow you to process all files, and **Deselect All** will deselect all files that have been selected.



5. Click the buttons in the center of the screen to move the files over to the Pending File List. The single arrow will move only the selected files and the double arrow will move all files from the list.

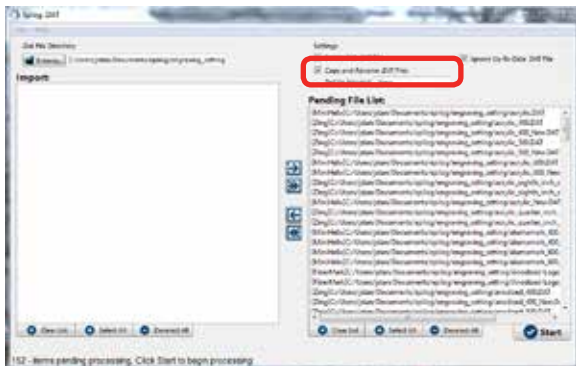


6. Choose your settings. **Delete Old .DAT Files** will permanently delete all of the .DAT files in the Pending File List after they have been processed. It is recommended that you leave this unchecked unless you are an experienced user.



USING THE DAT CONVERTER

7. Select **Copy and Rename .DAT File** to append a specified text to the end of the new .DAT files in the Pending File List after they have been processed. This text is specified in the **Text to Append** field. It is recommended to leave this option checked, as the original .DAT files will remain unmodified in the case you want to revert your driver to the previous version.



8. Finally, the **Ignore Up-To-Date .DAT File** should remain checked. This option ignores processing of .DAT files in the Pending File List that are already compatible with the current version of the driver.
9. Click the **Start** button to begin processing .DAT files. When the program is complete, all newly created or modified .DAT files will reside in the same directory in which they were created. It is recommended to keep all new and old .DAT files and the driver will automatically detect only the appropriate files.

